

U.S. PUBLIC LAND SURVEY MONUMENT RECORD

For Public Land Survey Corners in:

WI ADMINISTRATIVE CODE A-E 7.08 REQUIREMENT

T. 2 N., R. 12 E

CORNER CODE INDEX

A	1	2	3	4	5	6	7	8	9	10	11	12	13	14	15	16	17	18	19	20	21	22	23	24	25
B																									
C	6																								
D																									
E																									
F																									
G	7																								
H																									
I																									
J																									
K	18																								
L																									
M																									
N																									
O																									
P	19																								
Q																									
R																									
S																									
T	30																								
U																									
V																									
W																									
X	31																								
Y																									
Z																									

PLACE MONUMENT SYMBOL AT PROPER LOCATION ON ABOVE INDEX

ROCK TWP
ROCK COUNTY WI

IF AVAILABLE
ROCK COUNTY COORDINATES PREFERRED

North _____ Elev. _____

East _____

Hor. Datum _____ Vert. Datum _____

LATITUDE _____ ELLIPS. HT. _____

LONGITUDE _____

GPS (X) _____ TRAVERSE (X) _____

BASED ON THE FOLLOWING CONTROL:

CORNER MONUMENT WITNESS MONUMENT

(a) _____
BEARINGS ARE BASED ON:

FIELD BOOK _____ PAGE # _____

SHEET 1 OF 2

SHOW A PLAN VIEW DRAWING DEPICTING THE CORNER MONUMENT AND SURROUNDING PHYSICAL FEATURES, INCLUDING THE EXCAVATION AREA AND DEPTH.

PLANNING & ZONING COMMITTEE ADOPTED THE ABOVE FORM ON 12/2/1982

CORNER CODE L-19

RO1558

(B) Describe any record evidence, monument evidence, occupational evidence, testimonial evidence or any other material evidence you considered, and whether the monument was found or placed.

- 1867 LOCKE VOL 1 PG 289 & MAP #4010 SET STAKE THE CORNER OF CHAS. NOTES FENCE IS N75W 28. 2650.56' TO W 1/4 COR SEC 14. ESTABLISHED BY INTERSECTING 1/4 LINES.
- 1880 LEE VOL 2 PG 314 & MAP #4011 FOUND COR. SET BY LOCKE. 2653.86' TO S 1/4 COR SEC 14.
- 1939 SUNNY VOL 3 PG 412 INTERSECTED THE N & S 1/4 LINE WITH THE E & W 1/4 LINE AND SET IRON PIPE MON. FOR CORNER. 2652.7 TO W 1/4 COR SEC 14 & 2652.1 TO S 1/4 COR SEC 14.
- 1954 BATTERMAN MAP #3982 FOUND PIPE. CALLS FOR AN ANGLE OF 179-52-06 AT THE PIPE FROM THE E 1/4 TO THE W 1/4 CORNERS OF SEC 14.
- 1958 BATTERMAN CSM VOL 1 PG 55 FD PIPE. EAST 33.00 TO CONCRETE MONUMENT 4"X4" TOP 8"X8" BASE 42" LONG. ANGLE OF 89-23-40 FROM E 1/4 TO S 1/4 CORNERS OF SEC 14.
- 1964 LEE MAP# FOUND PIPE
- 1964 LEE MAP# FOUND PIPE
- 1965 BATTERMAN JR. VOL 1 PG 289 FD STAKE 2' DEEP IT IS .58' WEST OF STRAIGHT LINE BETWEEN N & S 1/4 CORNERS & 2.5' NORTH OF STRAIGHT LINE BETWEEN E & W 1/4 CORNERS.
- 1965 BATTERMAN JR. FOUND REMAINS OF WOOD STAKE. CALLS FOR 2653.1 TO W 1/4 COR SEC 14, EAST 36.20 TO A MONUMENT. PLACED R/R SPIKES EASTERLY AND NORTHERLY 6.00 OF THE STAKE. CALLS FOR A FOUND PIPE 3.17 EAST AND 0.65 NORTH.
- 1976 KNOERR CSM VOL 6 PG 55 FD 2" PIPE. EAST 33.00 TO PROPERTY PIN.
- 1980 COMBS MAP #4022 FOUND IRON PIPE.
- 1982 COMBS VOL 11 PG 17 CENTER AS RECORDED IN VOL 4 PG 264 OF ROCK COUNTY SURVEYORS' RECORDS. 2661.23' TO E 1/4 COR SEC 14 & ANGLE OF 89-22 FROM N 1/4 TO E 1/4 CORNERS OF SEC 14.
- 1983 COMBS CSM VOL 11 PG 191 & 200 FOUND PIPE.
- 1987 COMBS CSM VOL 12 PG 594 FD PIPE.
- 1988 COMBS CSM VOL 13 PG 263 FD NAIL.
- 1989 COMBS MAP #12269 DOES NOT CALL FOR TYPE OF MONUMENT AT THE CENTER.
- 1989 COMBS CSM VOL 14 PG 113 FD NAIL. 2653.10 TO W 1/4 COR SEC 14. ANGLE OF 89-27-00 FROM E 1/4 TO S 1/4 CORNERS OF SEC 14.
- 1992 COMBS MAP #11151 FOUND IRON SPIKE.
- 1992 COMBS MAP #1150 FOUND IRON SPIKE CALLS FOR 2661.25 TO E 1/4 COR SEC 14
- 1992 COMBS MAP #11149 FOUND IRON SPIKE.
- 1993 COMBS CSM VOL 17 PG 43 IRON STAKE. 2653.06 TO N 1/4 COR SEC 14.

FOUND LARGE NAIL IN HARMONY WITH FOUND R/R SPIKES AS SHOW IN DRAWING.

C) Was the corner restored through acceptance of (1) an obliterated evidence location, or, (2) a found perpetuated location?

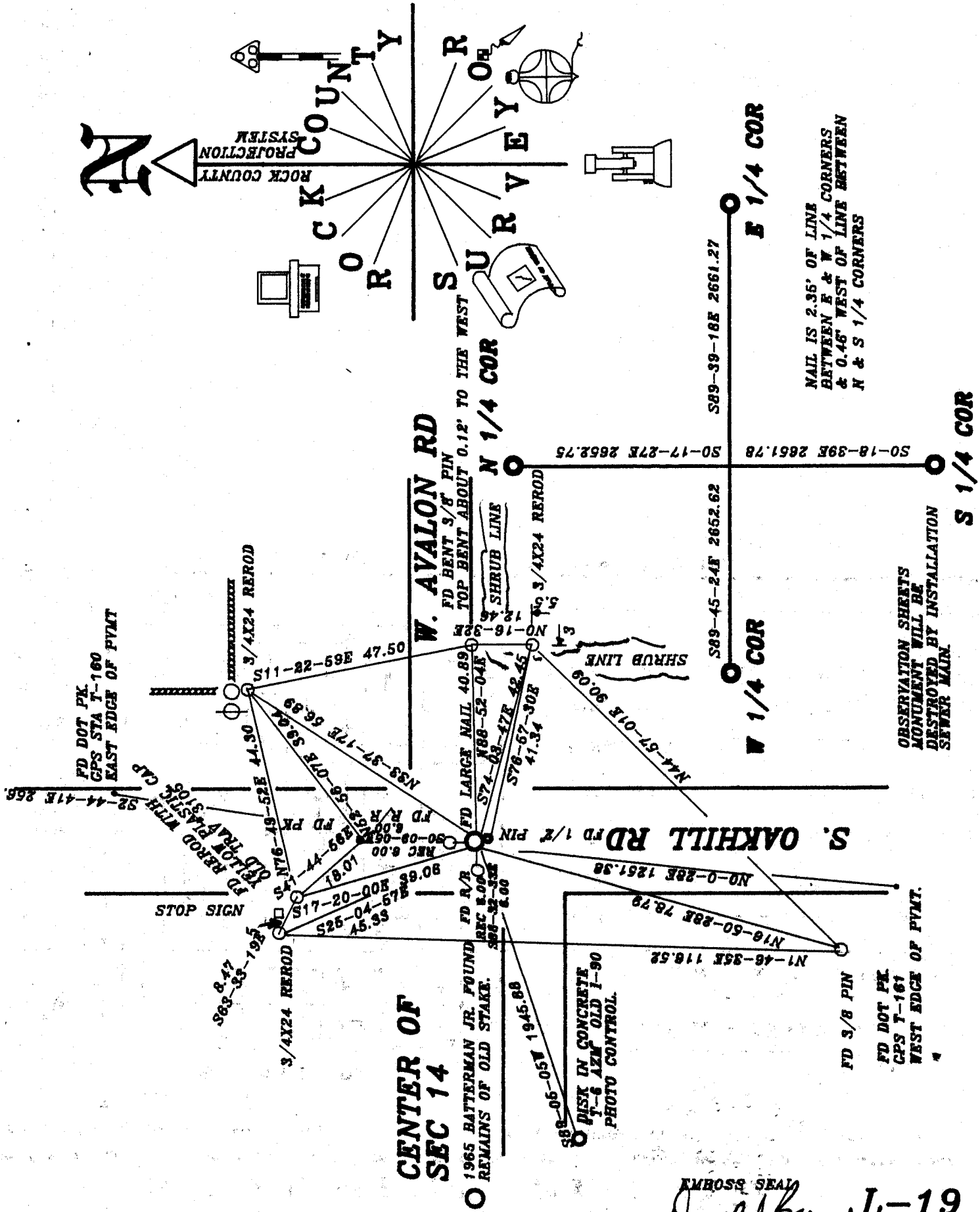
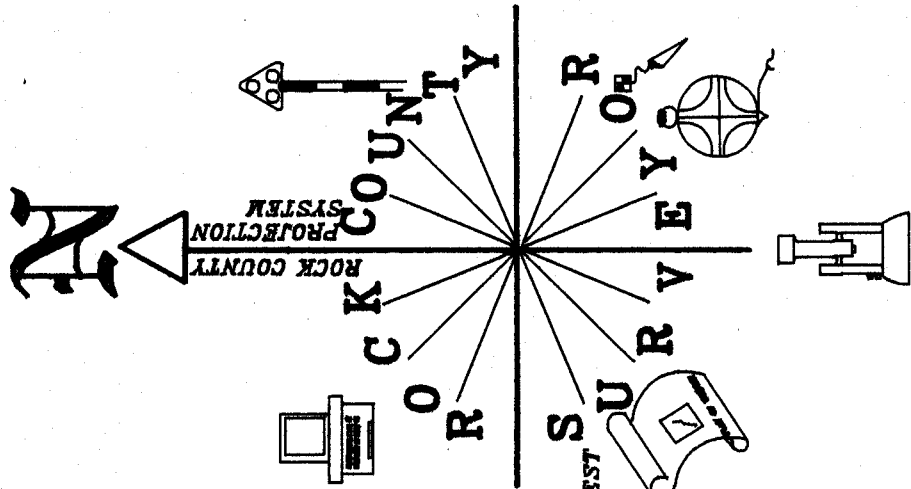
THE NAIL IS ACCEPTED AND PERPETUATES THE CENTER OF SECTION AS ESTABLISHED BY LOCKE AND FOUND BY BATTERMAN IN 1965.

D) Describe any material discrepancy between the location of the corner as restored or reestablished and the location of that corner as previously restored or reestablished by distance and direction. Show the discrepancy on the plan view drawing under (a), above. Show the distances between the corner as previously restored or reestablished and (1) the corner as restored or reestablished, and (2) to at least 4 of the witness monuments shown on the drawing in (a), above. THERE ARE THREE MONUMENTS IN DISPUTE; 1) THE LARGE NAIL 2) THE FOUND PIN & 3) THE PIPE AS SHOWN IN VOL 4 PG 264.

I, Donald Barnes, hereby certify that the corner location as identified by the corner code index was determined by me under by direction and control and that this U.S. Public Land Survey Monument Record is correct and complete to the best of my knowledge and belief.

seal
Donald Barnes
OCT 31, 1996

Number of included sheets 4-19



CENTER OF SEC 14

1965 BATTERMAN JR. FOUND REMAINS OF OLD STAKE.

DISK IN CONCRETE 1-6 AZM OLD I-90 PHOTO CONTROL.

NAIL IS 2.36' OF LINE BETWEEN E & W 1/4 CORNERS & 0.45' WEST OF LINE BETWEEN N & S 1/4 CORNERS

OBSERVATION SHEETS MONUMENT WILL BE DESTROYED BY INSTALLATION SEWER MAIN.

EMROSS SEAM
Donald Barnes L-19
 OCT 31, 19