

U.S. PUBLIC LAND SURVEY MONUMENT RECORD

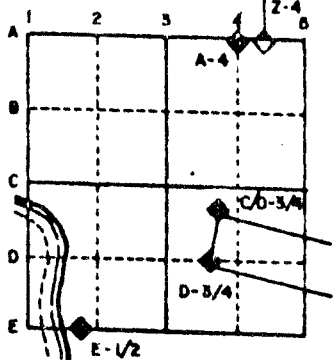
For Public Land Survey Corners in the
T. 2 N., R. 12 E.

CORNER CODE INDEX

	1	2	3	4	5	6	7	8	9	10	11	12	13	14	15	16	17	18	19	20	21	22	23	24	25
A																									
B																									
C	6																								
D		5																							
E			4																						
F				3																					
G					2																				
H																									
I																									
J																									
K																									
L																									
M																									
N																									
O																									
P																									
Q																									
R																									
S																									
T																									
U																									
V																									
W																									
X																									
Y																									
Z																									

PLACE MONUMENT SYMBOL (◆) AT PROPER LOCATION ON ABOVE INDEX

EXAMPLE



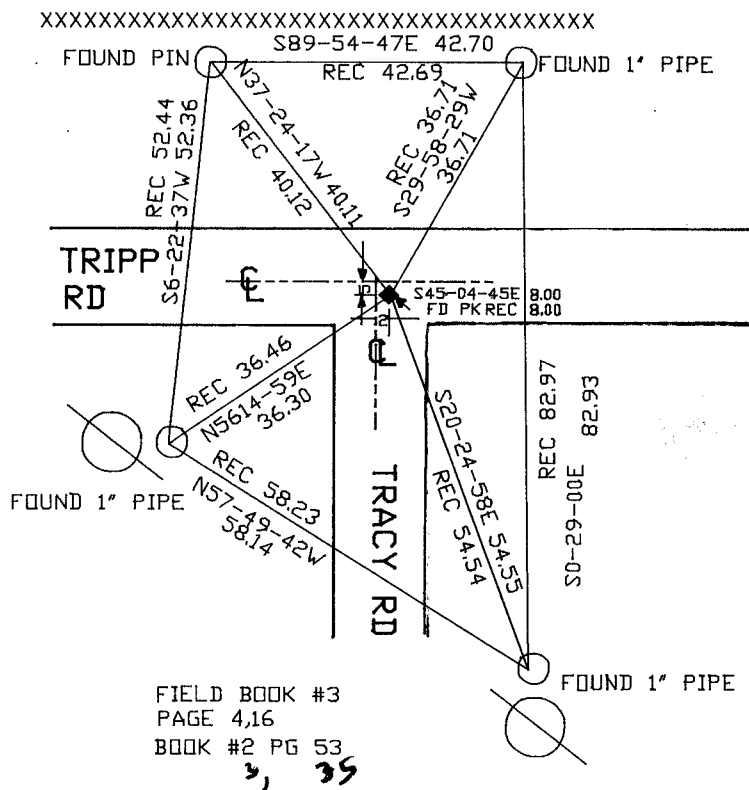
ROCK TWP
ROCK COUNTY WI

IF AVAILABLE
STATE PLANE COORDINATES

North (Y) _____ Elev. (Z) _____
 East (X) _____ Zone _____
 Hor. Datum _____ Vert. Datum _____

◆ CORNER MONUMENT
 ○ WITNESS MONUMENT
 ALUMINUM MON.

BEARINGS ARE BASED ON: TOWNSHIP PROJECT



FIELD BOOK #3
 PAGE 4,16
 BOOK #2 PG 53
 3, 39

SHEET ___ OF ___

CORNER CODE: 49

(B) Describe any record evidence, monument evidence, occupational evidence, testimonial evidence or any other material evidence you considered, and whether the monument was found or placed.

1868 (LOCKE ?) VOL 1 PG 321 FOUND STUMP OF EAST BEARING TREE AND OLD STAKE. SET BUR OAK STAKE WITH LARGE HARD HEAD ON NORTH AND SMALLER HARD HEADS ON EAST AND WEST. SHOWS A DISTANCE OF 2690.16 TO CENTER OF SECTION 17.

1973 LEE VOL 4 PG 593 DUG AND FOUND ROTTED STAKE SURROUNDED BY HARD HEADS ON NORTH, EAST, AND WEST AT 3.5' DEEP. REFERENCED SAME.

1973 LEE VOL 5 PG 16 FOUND STAKE AND 3 HARD HEADS. RE-REFERENCED 9-10-1974.

1973 LEE VOL 5 PG 49 FOUND STAKE HARD HEADS ON NORTH, EAST, WEST SHOWS REFERENCES.

FOUND THE ORIGINAL REFERENCE PK THAT IS SE OF THE CORNER. THE SW REFERENCE PIPE DISTANCE WAS THE ONLY DISTANCE THAT WAS NOT IN HARMONY. **PLACED ALUMINUM MONUMENT**

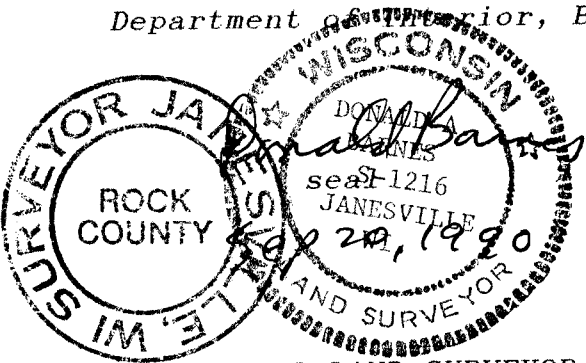
C) Was the corner restored through acceptance of (1) an obliterated evidence location, or, (2) a found perpetuated location?

ACCEPTED LOCATION AS DETERMINED BY REFERENCE MONUMENTS.

D) Describe any material discrepancy between the location of the corner as restored or reestablished and the location of that corner as previously restored or reestablished by distance and direction. Show the discrepancy on the plan view drawing under (a), above. Show the distances between the corner as previously restored or reestablished and (1) the corner as restored or reestablished, and (2) to at least 4 of the witness monuments shown on the drawing in (a), above.

(E) Was the corner reestablished through lost corner proportionate methods? If so, show the method, including the directions and distances to other public land survey corners used as evidence or used for proportioning the corner location.

I, Donald Barnes, hereby certify that the corner points as identified by the corner code index were, in a field survey on, July 19, 1990, established, re-established, monumented, re-monumented, recovered or restored as expressed below and in conformance with the regulations and rules as required in the current manual of survey instructions of the United States Department of the Interior, Bureau of Land Management.



AFFIX YOUR LAND SURVEYOR SEAL

COUNTY SURVEYOR FILING DATA
Date of computer entry _____
Date microfilmed _____
Number of included sheets _____
CORNER CODE

L9