

U.S. PUBLIC LAND SURVEY MONUMENT RECORD

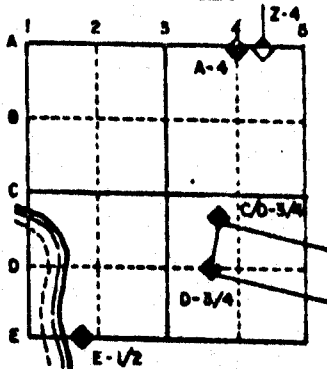
For Public Land Survey Corners in the
T. 2 N., R. 12 E.

CORNER CODE INDEX

	1	2	3	4	5	6	7	8	9	10	11	12	13	14	15	16	17	18	19	20	21	22	23	24	25
A																									
B																									
C	6																								
D		5																							
E			4																						
F				3																					
G	7																								
H		8																							
I			9																						
J				10																					
K					11																				
L						12																			
M	13																								
N		14																							
O			15																						
P				16																					
Q					17																				
R						18																			
S							19																		
T								20																	
U									21																
V										22															
W											23														
X												24													
Y													25												
Z														26											
															27										
																28									
																	29								
																		30							
																			31						
																				32					
																					33				
																						34			
																							35		
																								36	

PLACE MONUMENT SYMBOL (◆) AT PROPER LOCATION ON ABOVE INDEX

EXAMPLE



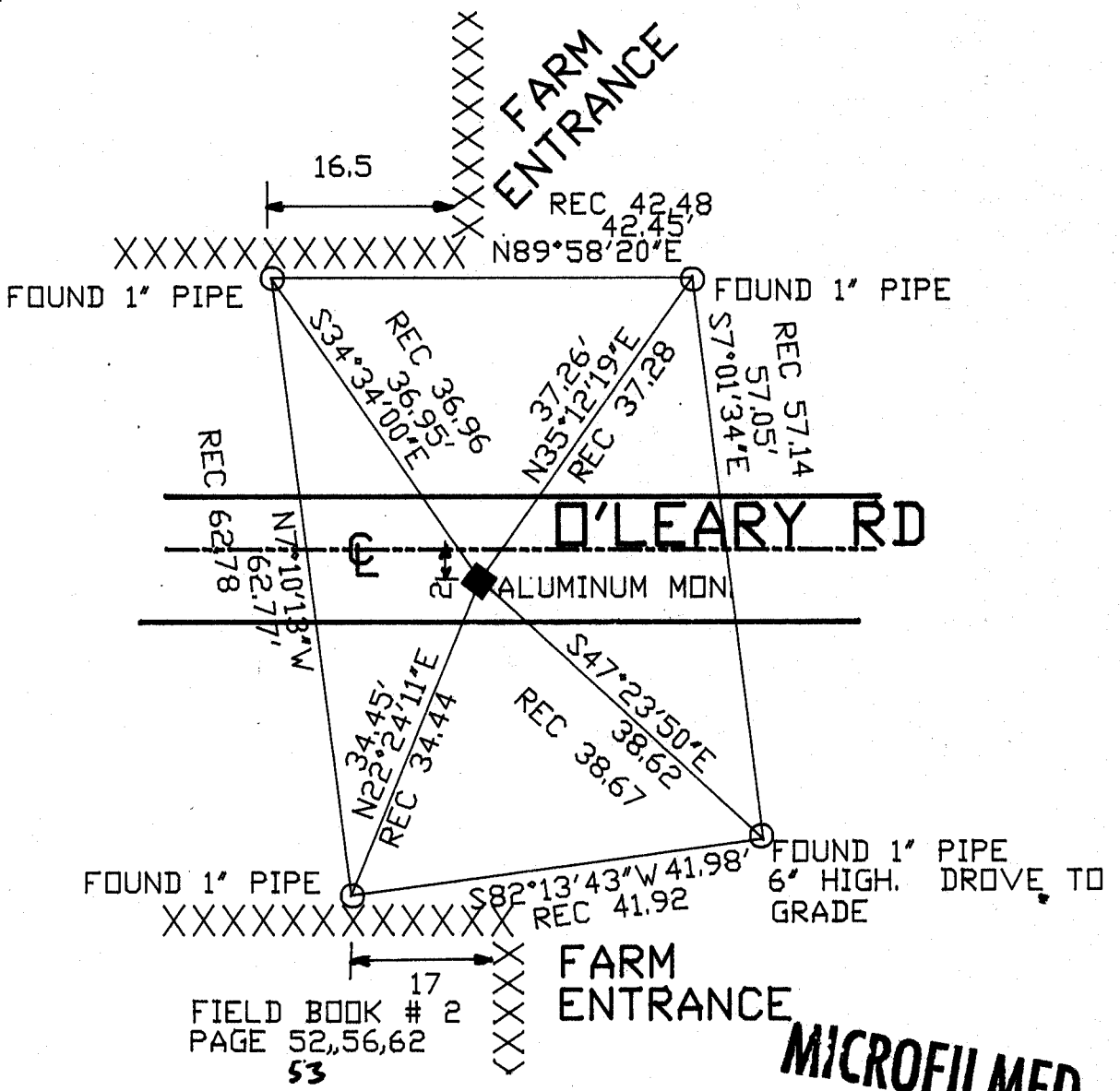
ROCK TWP
ROCK COUNTY WI

IF AVAILABLE
STATE PLANE COORDINATES

North (Y) _____ Eleve. (Z) _____
 East (X) _____ Zone _____
 Hor. Datum _____ Vert. Datum _____

◆ CORNER MONUMENT ○ WITNESS MONUMENT

BEARINGS ARE BASED ON: ASSUMED



FIELD BOOK # 2
PAGE 52,56,62
53

MICROFILMED

SHEET ___ OF ___

CORNER CODE: 59

(B) Describe any record evidence, monument evidence, occupational evidence, testimonial evidence or any other material evidence you considered, and whether the monument was found or placed.

1853 McVEAN VOL 1 PG 17 STATES NOTHING ABOUT THE MONUMENT.

SHOWS A DISTANCE OF 5261.52 TO THE NE CORNER OF SECTION 8.

1868 LOCKE VOL 1 PG 316 FOUND STAKE. SET WHITE OAK STAKE WITH HARDHEAD ON NORTH, SOUTH, EAST, AND WEST. SHOWS A DISTANCE OF 2681.91 TO THE SOUTH QUARTER CORNER OF SECTION 8.

1973 LEE VOL 4 PG 593 DUG AND FOUND STAKE SURROUNDED BY 4 HARD HEADS, 3' DEEP. REFERENCED WITH IRON PINS.

1973 LEE VOL 5 PG 16 FOUND STAKE AND HARD HEADS. RE-REFERENCED 9/10/1974.

1973 LEE VOL 5 PG 49 FOUND STAKE SURROUNDED BY 4 HARD HEADS. SHOWS REFERENCES BUT DOES NOT STATE THE TYPE OF MONUMENT THAT IS AT THE CORNER.

FOUND PK THAT IS IN HARMONY WITH RECORD REFERENCE TIES. DUG AND FOUND ALUMINUM MONUMENT. ADDED RISER TO MONUMENT.

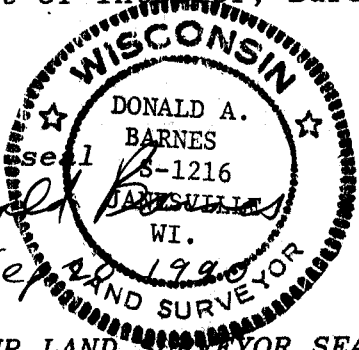
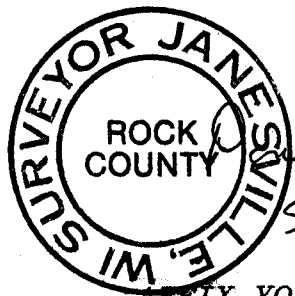
C) Was the corner restored through acceptance of (1) an obliterated evidence location, or, (2) a found perpetuated location?

ACCEPTED FOUND PERPETUATED LOCATION.

D) Describe any material discrepancy between the location of the corner as restored or reestablished and the location of that corner as previously restored or reestablished by distance and direction. Show the discrepancy on the plan view drawing under (a), above. Show the distances between the corner as previously restored or reestablished and (1) the corner as restored or reestablished, and (2) to at least 4 of the witness monuments shown on the drawing in (a), above.

(E) Was the corner reestablished through lost corner proportionate methods? If so, show the method, including the directions and distances to other public land survey corners used as evidence or used for proportioning the corner location.

I, Donald Barnes, hereby certify that the corner points as identified by the corner code index were, in a field survey on, JULY 10, 1989, established, re-established, monumented, re-monumented, recovered or restored as expressed below and in conformance with the regulations and rules as required in the current manual of survey instructions of the United States Department of Interior, Bureau of Land Management.



COUNTY SURVEYOR FILING DATA

Date of computer entry _____

Date microfilmed _____

Number of included sheets _____

CORNER CODE

AFFIX YOUR LAND SURVEYOR SEAL

59