

U.S. PUBLIC LAND SURVEY MONUMENT RECORD

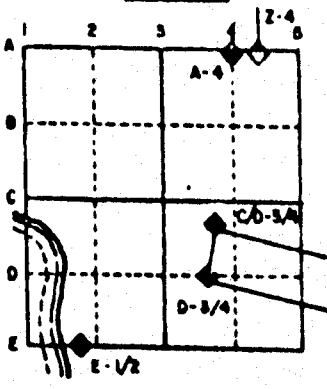
For Public Land Survey Corners in the
T. 2 N., R. 12 E.

CORNER CODE INDEX

	1	2	3	4	5	6	7	8	9	10	11	12	13	14	15	16	17	18	19	20	21	22	23	24	25
A																									
B																									
C																									
D																									
E																									
F																									
G																									
H																									
I																									
J																									
K																									
L																									
M																									
N																									
O																									
P																									
Q																									
R																									
S																									
T																									
U																									
V																									
W																									
X																									
Y																									
Z																									

PLACE MONUMENT SYMBOL (◆) AT PROPER LOCATION ON ABOVE INDEX

EXAMPLE

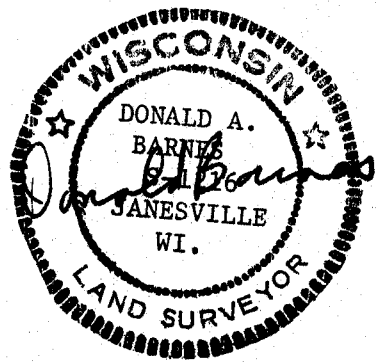
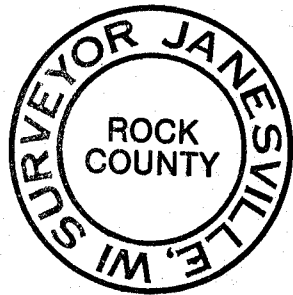


ROCK TWP
ROCK COUNTY WI

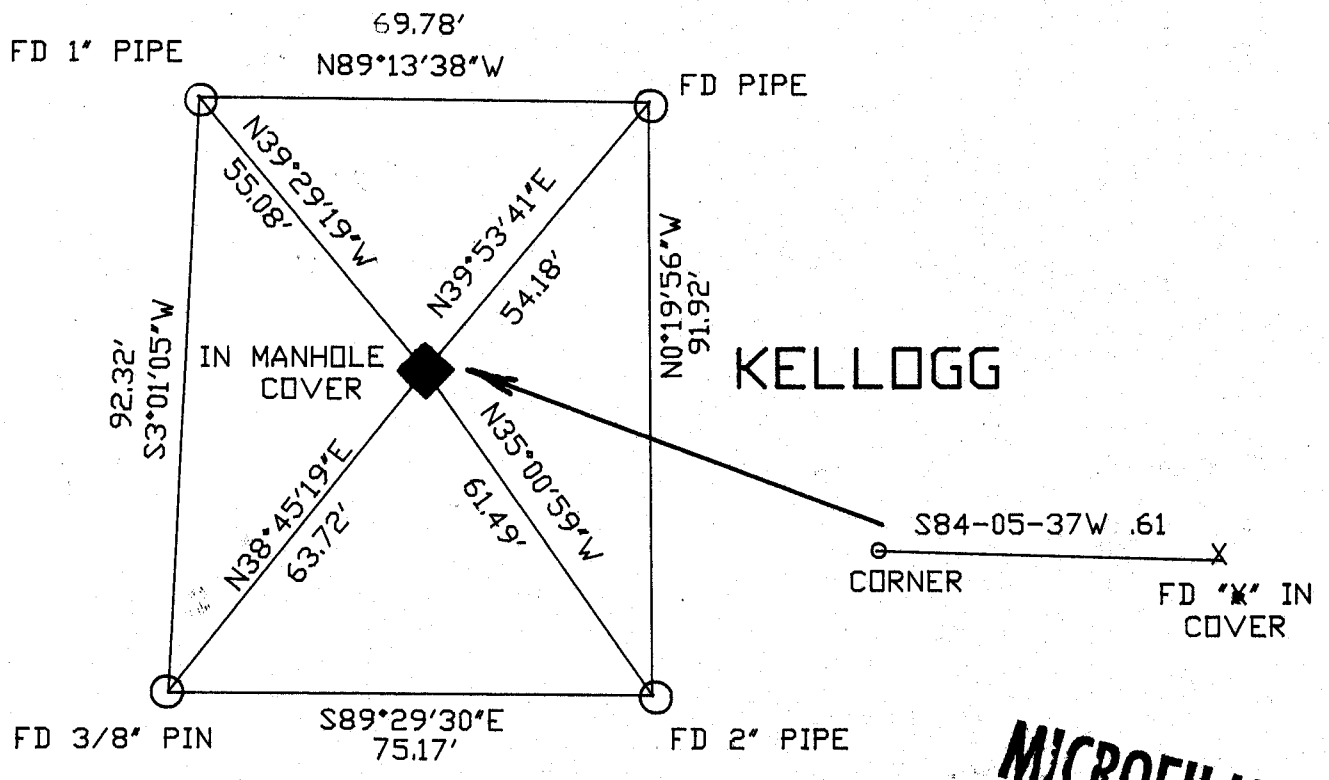
IF AVAILABLE
STATE PLANE COORDINATES

North (Y) _____ Eleve. (Z) _____
 East (X) _____ Zone _____
 Hor. Datum _____ Vert. Datum _____

◆ CORNER MONUMENT ○ WITNESS MONUMENT



BEARINGS ARE BASED ON: Twp Project



S. OAKHILL

MICROFILMED

SHEET 1 OF 4

CORNER CODE: G19

(B) Describe any record evidence, monument evidence, occupational evidence, testimonial evidence or any other material evidence you considered, and whether the monument was found or placed.

- 1870 RUGER VOL 2 PG 21 SUBDIVIDED SECTION 11. CALLS FOR 2653.20 TO THE W 1/4 CORNER AND 2659.96 TO THE N 1/4 CORNER OF SECTION 11.
- 1870 RUGER VOL 2 PG 37. DROVE IRON DRAG TOOTH & ROUND PIECE OF IRON SOUTH. CALLS FOR 2653.20 TO W 1/4 CORNER OF SECTION 11.
- 1880 LEE VOL 2 PG 298 FOUND DRAG TOOTH 2670.36 TO E 1/4 CORNER AND 2641.98 TO S 1/4 CORNER OF SECTION 11.
- 1883 RUGER VOL 2 PG 408 STATES NOTHING ABOUT THE CORNER BUT CALLS FOR 2641.98 TO THE SOUTH 1/4 CORNER OF SECTION 11.
- 1894 BLEEDORN VOL 2 PG 484 USED EAST LINE OF SW 1/4 OF SECTION 11.
- 1962(?) BATTERMAN JR. VOL 4 PG 126 IRON AT CENTER. SHOWS REFERENCE TIES.
- 1963 KNOERR "3RD SYLVESTER PARK" BK 22 PG 4. USED THE CORNER BUT DID NOT DESCRIBE THE MONUMENT.
- 1972 BIAGI "COMMONS SOUTH" BK 26 PG 6 USED THE CORNER BUT DID NOT DESCRIBE THE MONUMENT.
- 1972 SHIMEAL CSM 2 PG 162 USED THE CORNER BUT DID NOT DESCRIBE THE MONUMENT.
- 1985 COMBS CSM 12-237 USED THE CORNER BUT DID NOT DESCRIBE THE MONUMENT.

FOUND CUT "X" IN TOP OF MAN HOLE. IT WAS NOT IN HARMONY WITH SUBDIVISION PLATS. "X" IS IN SUCH A POSITION THAT THE LOCATION WILL MOVE GREATLY AS THE COVER IS MOVED. RESTORED POSITION BUT DID NOT MARK IT ON THE COVER. THE RESTORED POSITION IS 1.48 NORTH OF THE E/W QUARTER LINE AND .22 EAST OF THE N/S QUARTER LINE.

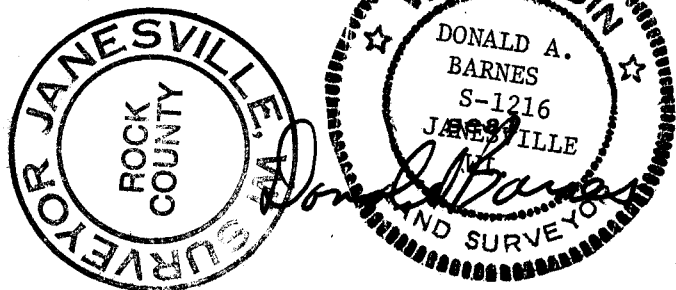
C) Was the corner restored through acceptance of (1) an obliterated evidence location, or, (2) a found perpetuated location?

RESTORED THROUGH ACCEPTANCE OF OBLITERATED EVIDENCE LOCATION.

D) Describe any material discrepancy between the location of the corner as restored or reestablished and the location of that corner as previously restored or reestablished by distance and direction. Show the discrepancy on the plan view drawing under (a), above. Show the distances between the corner as previously restored or reestablished and (1) the corner as restored or reestablished, and (2) to at least 4 of the witness monuments shown on the drawing in (a), above.

FOUND "X" IS NOT IN HARMONY WITH LOCATION SUBDIVISION PLATS.

I, Donald Barnes, hereby certify that the corner points as identified by the corner code index were, in a field survey on, September 9, 1991, established, re-established, monumented, re-monumented, recovered or restored as expressed below and in conformance with the regulations and rules as required in the current manual of survey instructions of the United States Department of the Interior, Bureau of Land Management.



AFFIX YOUR LAND SURVEYOR SEAL

COUNTY SURVEYOR FILING DATA

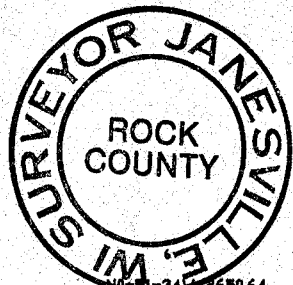
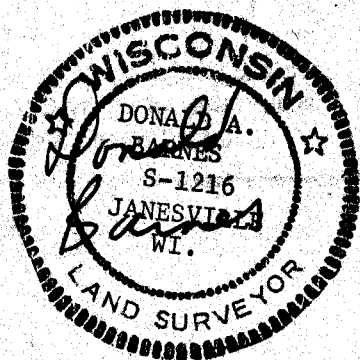
Date of computer entry _____

Date microfilmed _____

Number of included sheets _____
CORNER CODE

20F &

SEC 2



N 1/4 COR

CENTER

E 1/4 COR

NW COR

N 1/4 COR

NE COR

N 1/4 COR

NE COR

W 1/4 COR

CENTER

W 1/4 COR

CENTER

E 1/4 COR

SW COR

S 1/4 COR

SE COR

S 1/4 COR

SE COR

SEC 11

SEC 12

SO-24-14E 2672.96
COMBS 1989 2673.00
SUB 2671.48
ELY 1920 1671.80
ELY 1980 2679.09
REC 2671.80

SO-17-29E 2643.57
RUGER 1883 2641.98

S89-19-08E 2667.47
RUGER 1871 2665.74
RUGER 1870 2665.74

22 OFF N/S LINE
148 OFF E/W LINE

KAKUSKI 1960 5332.81
NO-19-45W 2662.23
MAP 3863 1331.8

COMMONS SOUTH
BIAGI 1972 1324.40
NO-19-11W 2644.68

NO-21-34E 2650.64
MILLER 2655.18
RUGER 2649.90
LOCKE 2649.57

BATTERMAN 1957 2669.33
SUNNY 1937END
SO-28-26E 2651.83
SUNNY 1929 2650.8

SO-0-25E 2642.61
RUGER 1883 2641.98
RUGER 1870 2636.97

COMBS 1976 1321.22
SO-00-21E 1321.51

RUGER 2644.37
SUNNY 2650.8

34 OFF NW-N1/4 LINE

REC 1326.17
NO-26-27W 2652.48

115 OFF NW/NE LINE
55 OFF L/16-NE LINE

SO-17-36E 2639.14

SO-24-16E 2651.88
SUNNY 1986 2652.44
SUNNY 1944 2651.6

S88-25-34E 2654.04
RUGER 1877 2648.92
RUGER 1870 2648.92
RUGER 2648.92

2.56 OFF N/S LINE
.44 OFF E/W LINE

REC 91-25-20
S88-25-14E 2357.83

SUNNY 1337.22
LEE 1970 91-25-20
91-39-28

SO-24-30E 2646.28
RUGER 1871 2647.26
LOCKE 1863 2640.92
LOCKE 1863 2641.58

BATTERMAN 1962 2649.98
BARNES SO-23-17E 2650.05
SUNNY 1939 2759.60
RUGER 1871 2649.57

SO-23-14E 2651.15
BATTERMAN 1957 2642.72
RUGER 1870 2647.92

30F3
G19

