

U.S. PUBLIC LAND SURVEY MONUMENT RECORD

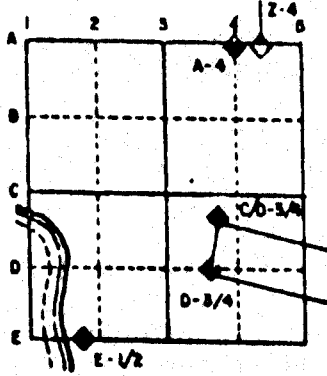
For Public Land Survey Corners in the
T. 2 N., R. 12 E.

CORNER CODE INDEX

1	2	3	4	5	6	7	8	9	10	11	12	13	14	15	16	17	18	19	20	21	22	23	24	25
A																								
B	6																							
C		5																						
D			4																					
E				3																				
F					2																			
G	7																							
H		8																						
I			9																					
J				10																				
K					11																			
L						12																		
M	13																							
N		14																						
O			15																					
P				16																				
Q					17																			
R						18																		
S							19																	
T								20																
U									21															
V										22														
W											23													
X												24												
Y													25											
Z														26										
															27									
																28								
																	29							
																		30						
																			31					
																				32				
																					33			
																						34		
																							35	
																								36

PLACE MONUMENT SYMBOL (◊) AT PROPER LOCATION ON ABOVE INDEX

EXAMPLE



ROCK TWP
ROCK COUNTY WI

IF AVAILABLE
STATE PLANE COORDINATES

North (Y) _____ Elev. (Z) _____
 East (X) _____ Zone _____
 Hor. Datum _____ Vert. Datum _____

◊ CORNER MONUMENT

○ WITNESS MONUMENT

○ 3/4"X24 REROD WITH ORANGE PLASTIC CAP

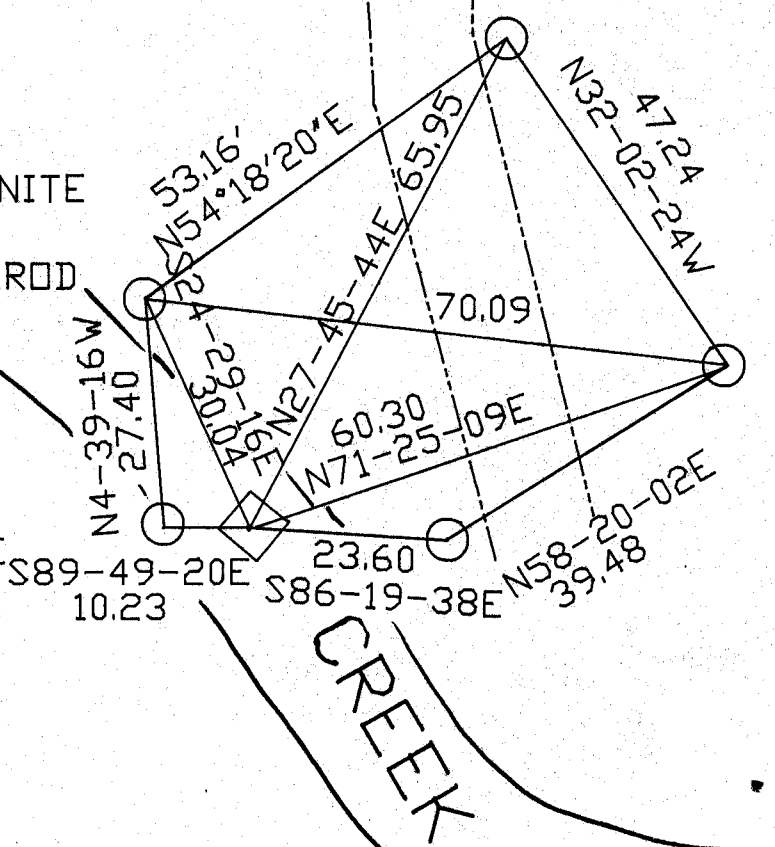
DEEP SWALE

BEARINGS ARE BASED ON: TOWNSHIP PROJECT

CARSONITE POST BY REROD

G-1 MON. @ WATERS EDGE

FIELD BOOK #3 PG 39



MICROFILMED

SHEET 1 OF 1

CORNER CODE: G9

(B) Describe any record evidence, monument evidence, occupational evidence, testimonial evidence or any other material evidence you considered, and whether the monument was found or placed.

1853 McVEAN VOL 1 PG 17 SHOWS A DISTANCE OF 2638.68 TO THE CENTER OF SECTION 9.

1868 LOCKE VOL 1 PG 316. SHOWS A DISTANCE OF 2656.50 TO THE CENTER OF SECTION 8.

1879 RUGER VOL 2 PG 261 FOUND CORNER AS SET BY CHURCH. STAKE AT INTERSECTION OF FENCES.

1892 BLEEDORN VOL 2 PG 462. FOUND STAKE AT INTERSECTION OF FENCES.

I ESTABLISHED THE CORNER IN HARMONY WITH OCCUPATION AND LOCKE AND McVEAN'S DISTANCES. I ESTABLISHED THE CORNER MID WAY BETWEEN THE NW AND SW CORNERS OF SECTION 9. THIS ESTABLISHED THE N/S POSITION. THIS POSITION IS ON LINE WITH THE E/W FENCE THAT IS TO THE WEST. THE FENCE INTERSECTION AT THE CENTER OF SECTION IS IN HARMONY WITH McVEAN'S DISTANCES. IT IS 1.25 EAST OF A STRAIGHT LINE BETWEEN THE NORTH AND SOUTH QUARTER CORNERS OF SECTION 8 AND ON LINE WITH THE W 1/4 AND E 1/4 CORNERS OF SECTION 8. McVEAN'S NOTES INDICATES THAT HE DID NOT PLACE ANYTHING AT THE CENTER OF SECTION 8. I USED THE FENCE AS THE MONUMENT OF THE CENTER OF SECTION 8. I ESTABLISHED THE E/W POSITION OF THE E 1/4 CORNER OF SECTION 8 BY PRORATING LOCKE'S DISTANCE FROM THE CENTER OF SECTION 8 TO THE E 1/4 CORNER OF SECTION 8. THIS APPEARS TO BE IN HARMONY WITH McVEAN'S PRORATED DISTANCE ALONG THE CENTER OF SECTION 9. I INSTALLED A POLY MONUMENT. CORNER IS IN CREEK. DID NOT MONUMENT CORNER.

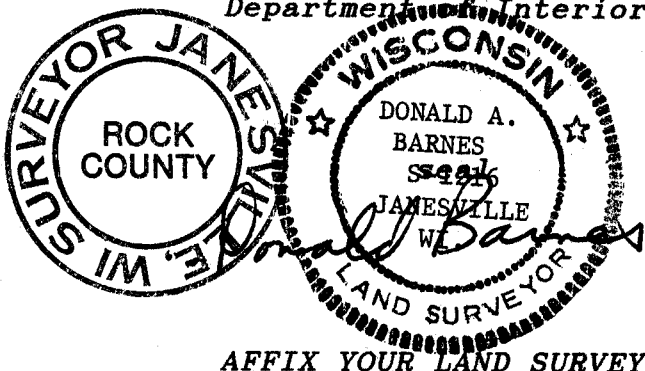
C) Was the corner restored through acceptance of (1) an obliterated evidence location, or, (2) a found perpetuated location?

THE CORNER WAS RESTORED THROUGH ACCEPTANCE OF OBLITERATED EVIDENCE LOCATION.

D) Describe any material discrepancy between the location of the corner as restored or reestablished and the location of that corner as previously restored or reestablished by distance and direction. Show the discrepancy on the plan view drawing under (a), above. Show the distances between the corner as previously restored or reestablished and (1) the corner as restored or reestablished, and (2) to at least 4 of the witness monuments shown on the drawing in (a), above.

(E) Was the corner reestablished through lost corner proportionate methods? If so, show the method, including the directions and distances to other public land survey corners used as evidence or used for proportioning the corner location.

I, Donald Barnes, hereby certify that the corner points as identified by the corner code index were, in a field survey on, November 2, 1990, established, re-established, monumented, re-monumented, recovered or restored as expressed below and in conformance with the regulations and rules as required in the current manual of survey instructions of the United States Department of Interior, Bureau of Land Management.



AFFIX YOUR LAND SURVEYOR SEAL

COUNTY SURVEYOR FILING DATA

Date of computer entry _____

Date microfilmed _____

Number of included sheets _____
CORNER CODE