

U.S. PUBLIC LAND SURVEY MONUMENT RECORD

For Public Land Survey Corners in the

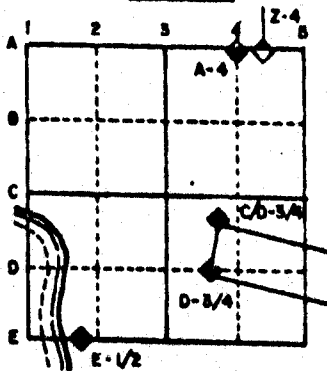
T. 2 N., R. 12 E.

CORNER CODE INDEX

	1	2	3	4	5	6	7	8	9	10	11	12	13	14	15	16	17	18	19	20	21	22	23	24	25
A																									
B																									
C																									
D																									
E																									
F																									
G																									
H																									
I																									
J																									
K																									
L																									
M																									
N																									
O																									
P																									
Q																									
R																									
S																									
T																									
U																									
V																									
W																									
X																									
Y																									
Z																									

PLACE MONUMENT SYMBOL (◆) AT PROPER LOCATION ON ABOVE INDEX

EXAMPLE



ROCK TWP
ROCK COUNTY WI

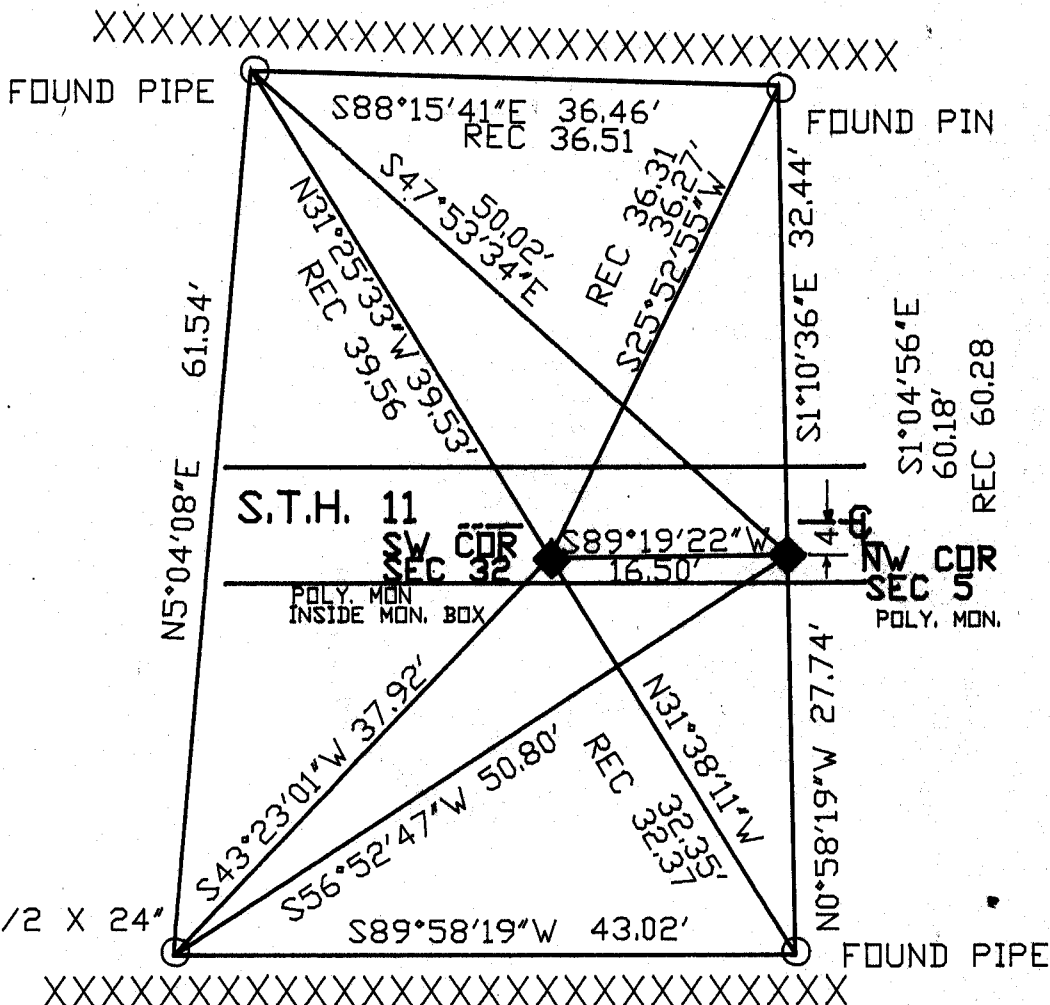
IF AVAILABLE STATE PLANE COORDINATES

NAD
27 North (Y) 246,124.14 Elev. (2) _____
East (X) 2,239,229.46 Zone _____
Hor. Datum _____ Vert. Datum _____

e.)

◆ CORNER MONUMENT

○ WITNESS MONUMENT



BEARINGS ARE BASED ON: ASSUMED

MICROFILMED

SHEET ___ OF ___

CORNER CODE: AS

(B) Describe any record evidence, monument evidence, occupational evidence, testimonial evidence or any other material evidence you considered, and whether the monument was found or placed.

1834 HARRISON ORIGINAL GOVERNMENT SURVEYOR. FIELD NOTES - INTERSECTED NORTH BOUNDARY 16.5' EAST OF POST IN NORTH EDGE OF MARSH. SET POST AND RAISED MOUND. MEASURED 2721.84 TO W 1/4 CORNER OF SECTION 5.

1854 McVEAN VOL 1 PG 23 SHOWS A DISTANCE OF 5280 TO THE NW CORNER OF SECTION 6.

1859 RUGER VOL 1 PG 111 THE POSTS OF THE SECTION IN THE TOWN OF ROCK ARE 16.5' EAST OF THOSE FOR JANESVILLE.

1870 RUGER VOL 2 PG 43 FOUND OLD STAKE. SHOWS A DISTANCE OF 2652.28 TO THE N 1/4 CORNER OF SECTION 6. SHOWS THE CORNER AS 16.5 EAST OF THE SE CORNER OF SECTION 31 JANESVILLE TOWNSHIP.

1881 LEE VOL 2 PG 322 DROVE A CEDAR STAKE AT A POINT 16.5' EAST OF THE CORNER FOR SEC 31 (JANESVILLE TWP) AND SURROUNDED IT BY LIMESTONES S,E,&W AND HARDHEAD ON THE W. SHOWS A DISTANCE OF 1437.15' TO THE 1/16th CORNER THAT IS TO THE SOUTH.

1987 BARNES JANESVILLE REMONUMENTATION PROJECT. PLACED POLY. MONUMENT 16.50 EAST OF SE CORNER OF SEC 31 JANESVILLE TOWNSHIP ON LINE WITH THE SW CORNER & THE S 1/4 CORNERS OF SECTION 32.

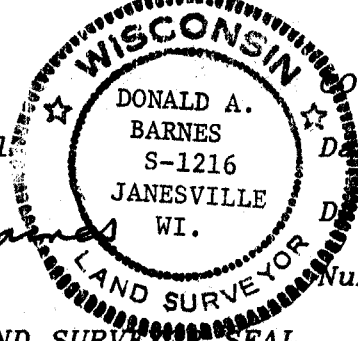
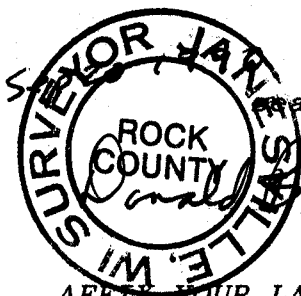
C) Was the corner restored through acceptance of (1) an obliterated evidence location, or, (2) a found perpetuated location?

FOUND POLY MONUMENT AND ACCEPTED SAME.

D) Describe any material discrepancy between the location of the corner as restored or reestablished and the location of that corner as previously restored or reestablished by distance and direction. Show the discrepancy on the plan view drawing under (a), above. Show the distances between the corner as previously restored or reestablished and (1) the corner as restored or reestablished, and (2) to at least 4 of the witness monuments shown on the drawing in (a), above.

(E) Was the corner reestablished through lost corner proportionate methods? If so, show the method, including the directions and distances to other public land survey corners used as evidence or used for proportioning the corner location.

I, Donald Barnes, hereby certify that the corner points as identified by the corner code index were, in a field survey on, July 18, 1990, established, re-established, monumented, re-monumented, recovered or restored as expressed below and in conformance with the regulations and rules as required in the current manual of survey instructions of the United States Department of Interior, Bureau of Land Management.



COUNTY SURVEYOR FILING DATA
Date of computer entry _____
Date microfilmed _____
Number of included sheets _____
CORNER CODE

AFFIX FOUR LAND SURVEYOR SEAL

A5