

U.S. PUBLIC LAND SURVEY MONUMENT RECORD

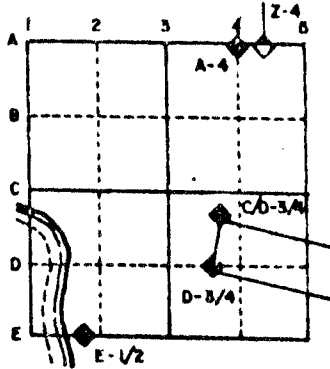
For Public Land Survey Corners in the
T. 2 N., R. 12 E.

CORNER CODE INDEX

	1	2	3	4	5	6	7	8	9	10	11	12	13	14	15	16	17	18	19	20	21	22	23	24	25
A																									
B																									
C																									
D																									
E																									
F																									
G																									
H																									
I																									
J																									
K																									
L																									
M																									
N																									
O																									
P																									
Q																									
R																									
S																									
T																									
U																									
V																									
W																									
X																									
Y																									
Z																									

PLACE MONUMENT SYMBOL (◆) AT PROPER
LOCATION ON ABOVE INDEX

EXAMPLE



ROCK TWP
ROCK COUNTY WI

IF AVAILABLE
STATE PLANE COORDINATES

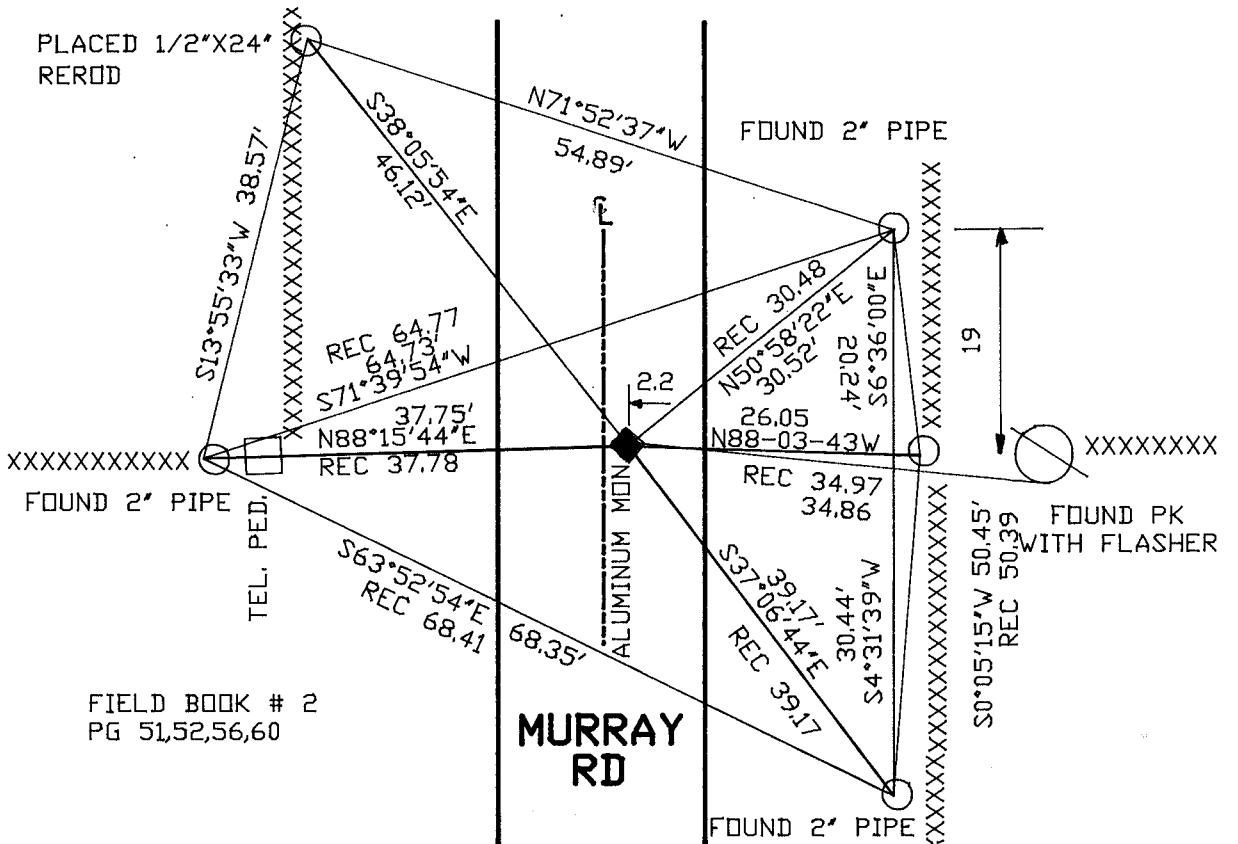
North (Y) _____ Eleve. (Z) _____
 East (X) _____ Zone _____
 Hor. Datum _____ Vert. Datum _____

◆ CORNER MONUMENT

○ WITNESS MONUMENT

ALUMINUM

BEARINGS ARE BASED ON: ASSUMED



FIELD BOOK # 2
PG 51,52,56,60

MURRAY RD

MICROFILMED

SHEET ___ OF ___

CORNER CODE: **G5**

(B) Describe any record evidence, monument evidence, occupational evidence, testimonial evidence or any other material evidence you considered, and whether the monument was found or placed.

1866 LOCKE VOL 1 PG 266 FOUND WEST BEARING TREE AND STUMP OF EAST BEARING TREE AND OLD STAKE. SET STAKE WITH LIME STONE ON EAST AND LARGE HARD HEAD ON SOUTH AND SMALLER HARD HEAD ON NORTH AND WEST.

1868 LOCKE VOL 1 PG 314. FOUND CORNER AS SET BY SELF. SHOWS A DISTANCE OF 2655.84 TO CENTER OF SECTION 7.

1879 RUGER VOL 2 PG 261 FOUND CORNER AS SET BY LOCKE. CORRECT

1892 BLEEDORN VOL 2 PG 462 FOUND STAKE AND 3 HARD HEADS AS SET BY RUGER. SHOWS A DISTANCE OF 2684.88 TO CENTER OF SECTION 8.

1972 LEE VOL 4 PG 588. SHOWS THE FOLLOWING DISTANCES AND BEARINGS IN SECTION 7:

TO W 1/4 CORNER S89-29-16E 5343.83
SE CORNER S01-06-23E 2649.08
NE CORNER S01-06-23E 2649.08

1977 BARNES VOL 5 PG 242 FOUND 3/4" RE-ROD. REFERENCED SAME.

FOUND 3/4" REROD AND REPLACED WITH AN ALUMINUM MONUMENT. RE-ROD WAS IN HARMONY WITH RECORD DISTANCES.

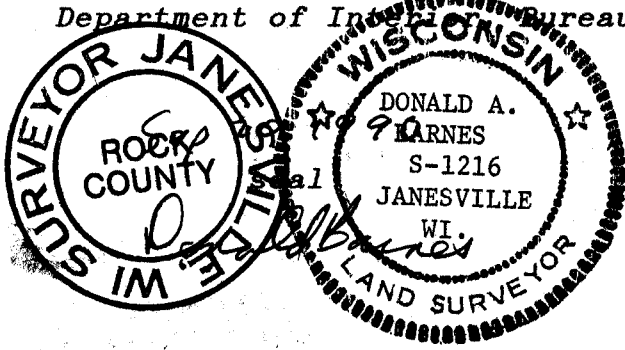
C) Was the corner restored through acceptance of (1) an obliterated evidence location, or, (2) a found perpetuated location?

ACCEPTED FOUND PERPETUATED LOCATION.

D) Describe any material discrepancy between the location of the corner as restored or reestablished and the location of that corner as previously restored or reestablished by distance and direction. Show the discrepancy on the plan view drawing under (a), above. Show the distances between the corner as previously restored or reestablished and (1) the corner as restored or reestablished, and (2) to at least 4 of the witness monuments shown on the drawing in (a), above.

(E) Was the corner reestablished through lost corner proportionate methods? If so, show the method, including the directions and distances to other public land survey corners used as evidence or used for proportioning the corner location.

I, Donald Barnes, hereby certify that the corner points as identified by the corner code index were, in a field survey on, JULY 10, 1989, established, re-established, monumented, re-monumented, recovered or restored as expressed below and in conformance with the regulations and rules as required in the current manual of survey instructions of the United States Department of Interior Bureau of Land Management.



COUNTY SURVEYOR FILING DATA

Date of computer entry _____

Date microfilmed _____

Number of included sheets _____

CORNER CODE

AFFIX YOUR LAND SURVEYOR SEAL