

# U.S. PUBLIC LAND SURVEY MONUMENT RECORD

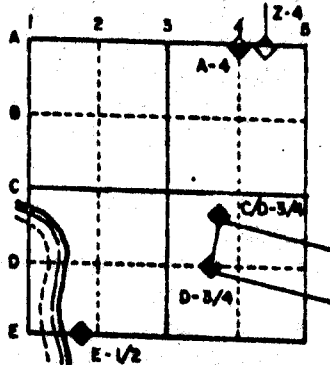
For Public Land Survey Corners in the  
T. 2 N., R. 12 E.

## CORNER CODE INDEX

	1	2	3	4	5	6	7	8	9	10	11	12	13	14	15	16	17	18	19	20	21	22	23	24	25
A																									
B																									
C	6																								
D		5																							
E			4																						
F				3																					
G					2																				
H	7																								
I		8																							
J			9																						
K				10																					
L					11																				
M						12																			
N							13																		
O								14																	
P									15																
Q										16															
R											17														
S												18													
T													19												
U														20											
V															21										
W																22									
X																	23								
Y																		24							
Z																			25						

PLACE MONUMENT SYMBOL (◆) AT PROPER LOCATION ON ABOVE INDEX

### EXAMPLE



ROCK TWP  
ROCK COUNTY WI

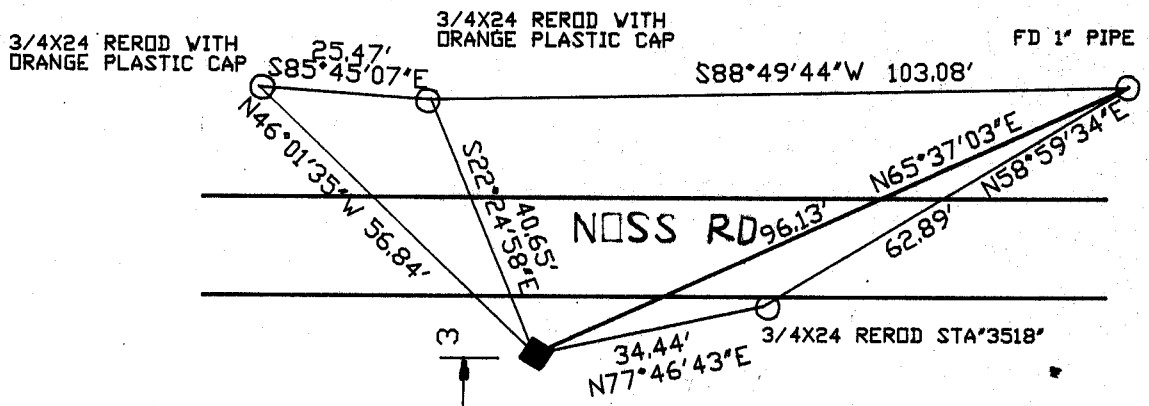
IF AVAILABLE  
STATE PLANE COORDINATES

NAD 27 North (Y) 216,984.87 Elev. (2) \_\_\_\_\_  
 East (X) 2,239,816.06 Zone \_\_\_\_\_  
 Hor. Datum \_\_\_\_\_ Vert. Datum \_\_\_\_\_  
 WPL 2,239,815.58

◆ CORNER MONUMENT

○ WITNESS MONUMENT

BEARINGS ARE BASED ON: TOWNSHIP PROJECT



SEE OBSERVATION STATION '615' &  
FIELD BOOK #3 PG 20  
2 P644

◆ FOUND 1" PIPE 4' SOUTH OF SOUTH EDGE OF CMP. PIPE WAS SURROUNDED BY 4 H.H. DROVE PIPE DEEP & PLACED POLY MON. ON TOP.

# MICROFILMED

SHEET \_\_\_ OF \_\_\_

CORNER CODE: X 5

(B) Describe any record evidence, monument evidence, occupational evidence, testimonial evidence or any other material evidence you considered, and whether the monument was found or placed.

- 1834 HARRISON. ORIGINAL FIELD NOTES. PLACED POST. BURR OAK 12 N87W 110 & W.OAK 24 N51E 136 LINKS.
- 1855 CHURCH VOL 1 PG 30 STATES NOTHING ABOUT CORNER. SHOWS BLACK OAK N 34 1/2 E 103 LINKS & BLACK OAK S 10 1/2 E 109 LINKS. SHOWS A DISTANCE OF 2646.27' TO THE NW AND SW CORNERS OF SECTION 33 AND 2641.32' TO THE CENTER OF SECTION 22.
- 1856 CHURCH VOL 1 PG 65 STATES NOTHING ABOUT CORNER. SHOWS A DISTANCE OF 2640' TO THE NW AND 2630.76 TO THE CENTER OF SECTION 33.
- 1966 BATTERMAN VOL 4 PG 257. CORNER SHOWN AS PIPE WITH REFERENCE PIPES.
- 1977 BARNES VOL 5 PG 235 FOUND 1 1/2" IRON PIPE. REFERENCED SAME.
- 1981 BARNES VOL 6 PG 143 SHOWS A 1952 BATTERMAN DISTANCE OF 2653.47' TO THE NW CORNER OF SECTION 33. ALSO SHOWS A 1952 BATTERMAN DISTANCE OF 2653.47 TO THE SW CORNER OF SECTION 33.

FOUND PIPE. REPLACED WITH POLY. MONUMENT.

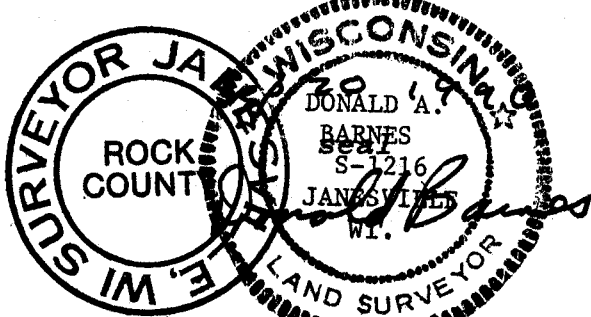
C) Was the corner restored through acceptance of (1) an obliterated evidence location, or, (2) a found perpetuated location?

ACCEPTED FOUND PERPETUATED LOCATION.

D) Describe any material discrepancy between the location of the corner as restored or reestablished and the location of that corner as previously restored or reestablished by distance and direction. Show the discrepancy on the plan view drawing under (a), above. Show the distances between the corner as previously restored or reestablished and (1) the corner as restored or reestablished, and (2) to at least 4 of the witness monuments shown on the drawing in (a), above.

(E) Was the corner reestablished through lost corner proportionate methods? If so, show the method, including the directions and distances to other public land survey corners used as evidence or used for proportioning the corner location.

I, Donald Barnes, hereby certify that the corner points as identified by the corner code index were, in a field survey on, JUNE 21, 1989, established, re-established, monumented, re-monumented, recovered or restored as expressed below and in conformance with the regulations and rules as required in the current manual of survey instructions of the United States Department of Interior, Bureau of Land Management.



AFFIX YOUR SURVEYOR SEAL

COUNTY SURVEYOR FILING DATA

Date of computer entry \_\_\_\_\_

Date microfilmed \_\_\_\_\_

Number of included sheets \_\_\_\_\_  
CORNER CODE