

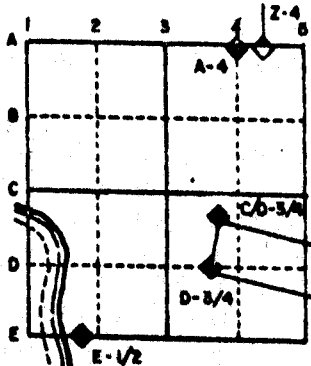
# U.S. PUBLIC LAND SURVEY MONUMENT RECORD

For Public Land Survey Corners in the  
T. 2 N., R. 12 E.

## CORNER CODE INDEX

	1	2	3	4	5	6	7	8	9	10	11	12	13	14	15	16	17	18	19	20	21	22	23	24	25
A																									
B																									
C	6																								
D		5																							
E			4																						
F				3																					
G					2																				
H	7																								
I		6																							
J			5																						
K				4																					
L	8																								
M		7																							
N			6																						
O				5																					
P	9																								
Q		8																							
R			7																						
S				6																					
T	30																								
U		29																							
V			28																						
W				27																					
X					26																				
Y						25																			
Z							24																		
								23																	
									22																
										21															
											20														
												19													
													18												
														17											
															16										
																15									
																	14								
																		13							
																			12						
																				11					
																					10				
																						9			
																							8		
																								7	
																									6
																									5
																									4
																									3
																									2
																									1

### EXAMPLE



ROCK TWP  
ROCK COUNTY WI

IF AVAILABLE  
STATE PLANE COORDINATES

NAD North (Y) 219,624.17 Elevation (2) \_\_\_\_\_  
 27 East (X) 2,239,755.15 Zone \_\_\_\_\_  
 Hor. Datum \_\_\_\_\_ Vert. Datum \_\_\_\_\_

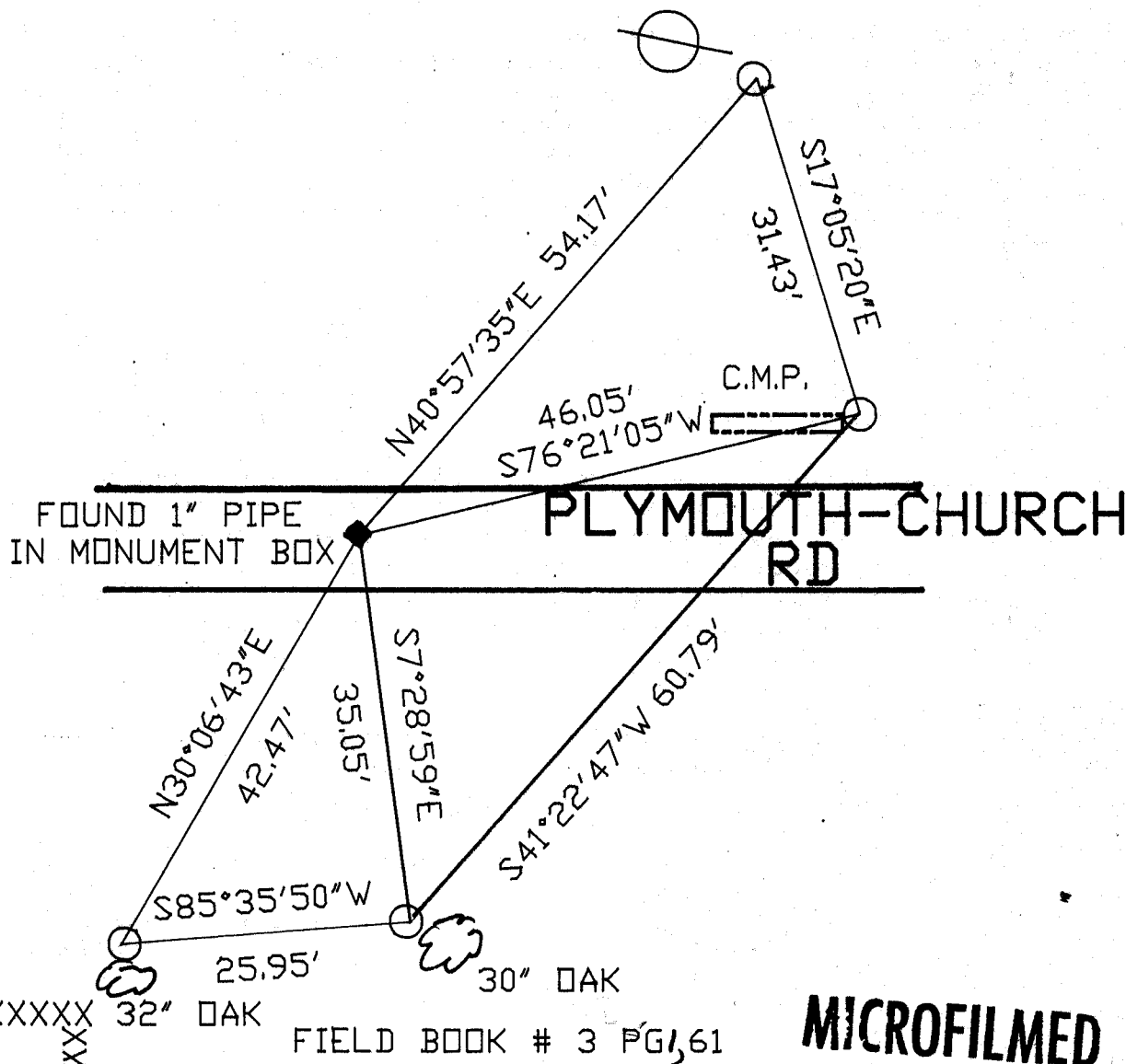
PLACE MONUMENT SYMBOL (◆) AT PROPER  
LOCATION ON ABOVE INDEX

WPL 219,623.54  
2,239,754.15

◆ CORNER MONUMENT

○ WITNESS MONUMENT

BEARINGS ARE BASED ON: ASSUMED



**MICROFILMED**

SHEET \_\_\_\_\_ OF \_\_\_\_\_

CORNER CODE: V5

(B) Describe any record evidence, monument evidence, occupational evidence, testimonial evidence or any other material evidence you considered, and whether the monument was found or placed.

- 1834 HARRISON ORIGINAL GOVERNMENT SURVEYOR. FIELD NOTES - COR TO SECTIONS 29,30,31,AND 32. BURR OAK 18 N19E 3.00 AND WHITE OAK 18 N72W 255.
- 1855 CHURCH VOL 1 PG 31 SHOWS 2640 TO S 1/4 CORNER OF SECTION 30.
- 1935 SUNNY VOL 3 PG 279 SHOWS APPROXIMATE LOCATION OF CORNER.
- 1966 BATTERMAN JR. VOL 4 PG 257 FOUND PIPE SET BY SHIMEALL AT CORNER. REFERENCED SAME.
- 1966 BATTERMAN JR. VOL 4 PG 286 WPL COORDINATES N/S 219,623.54;E/W 2,239,754.45. SHOWS REFERENCE TIES.
- 1972 LEE VOL 4 PG 577 SHOWS N88-50-00W 2645.24 TO THE S 1/4 COR OF SEC 30 AND S0-05-48W 2639.64 TO THE E 1/4 COR SEC 30.
- 1972 LEE VOL 4 PG 578 SHOWS N0-05-48E 2639.61 TO THE W 1/4 COR OF SEC 29 AND N89-26-10W 2673.37 TO THE S 1/4 COR OF SEC 29.
- 1972 LEE VOL 4 PG 579 CALLS FOR MONUMENT BOX AND REFERENCED SAME.
- 1981 BARNES VOL 6 PG 143 SHOWS WPL N1-19-37W 2640.07 TO THE W 1/4 CORNER OF SECTION 32.
- 1981 BARNES VOL 6 PG 144 SHOWS N1-18-06W 2640.06 TO THE W 1/4 COR SEC 29, N89-47-24E 2645.54 TO THE S 1/4 COR OF SEC 30, N1-19-37W 2640.09 TO THE E 1/4 COR OF SEC 31, N89-10-09E 2673.22 TO THE S 1/4 COR OF SEC 29, AND COMBS, 2662.93 TO THE S 1/4 COR OF SEC 29.

FOUND MONUMENT BOX.

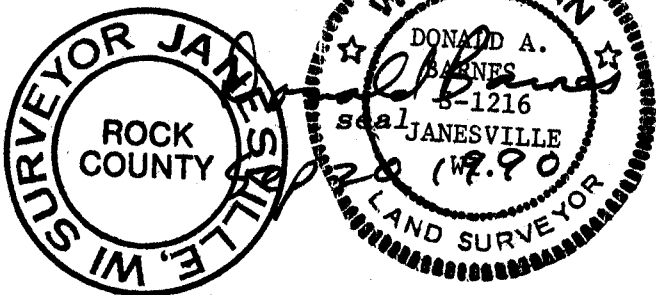
C) Was the corner restored through acceptance of (1) an obliterated evidence location, or, (2) a found perpetuated location?

ACCEPTED FOUND PERPETUATED LOCATION.

D) Describe any material discrepancy between the location of the corner as restored or reestablished and the location of that corner as previously restored or reestablished by distance and direction. Show the discrepancy on the plan view drawing under (a), above. Show the distances between the corner as previously restored or reestablished and (1) the corner as restored or reestablished, and (2) to at least 4 of the witness monuments shown on the drawing in (a), above.

(E) Was the corner reestablished through lost corner proportionate methods? If so, show the method, including the directions and distances to other public land survey corners used as evidence or used for proportioning the corner location.

I, Donald Barnes, hereby certify that the corner points as identified by the corner code index were, in a field survey on, JULY 14, 1989, established, re-established, monumented, re-monumented, recovered or restored as expressed below and in conformance with the regulations and rules as required in the current manual of survey instructions of the United States Department of the Interior Bureau of Land Management.



AFFIX YOUR LAND SURVEYOR SEAL

COUNTY SURVEYOR FILING DATA

Date of computer entry \_\_\_\_\_

Date microfilmed \_\_\_\_\_

Number of included sheets \_\_\_\_\_  
CORNER CODE

v 5