

U.S. PUBLIC LAND SURVEY MONUMENT RECORD

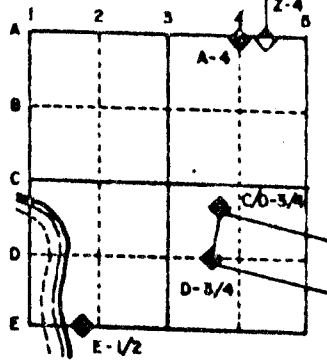
For Public Land Survey Corners in the
T. ___ N., R. ___ E.

CORNER CODE INDEX

	1	2	3	4	5	6	7	8	9	10	11	12	13	14	15	16	17	18	19	20	21	22	23	24	25
A																									
B																									
C	6																								
D		5																							
E			4																						
F				3																					
G					2																				
H																									
I																									
J	7																								
K		6																							
L			5																						
M				4																					
N					3																				
O						2																			
P							1																		
Q																									
R																									
S																									
T	30																								
U		29																							
V			28																						
W				27																					
X					26																				
Y						25																			
Z							24																		
								23																	
									22																
										21															
											20														
												19													
													18												
														17											
															16										
																15									
																	14								
																		13							
																			12						
																				11					
																					10				
																						9			
																							8		
																								7	
																									6
																									5
																									4
																									3
																									2
																									1

PLACE MONUMENT SYMBOL (◆) AT PROPER
LOCATION ON ABOVE INDEX

EXAMPLE



ROCK TWP
ROCK COUNTY WI

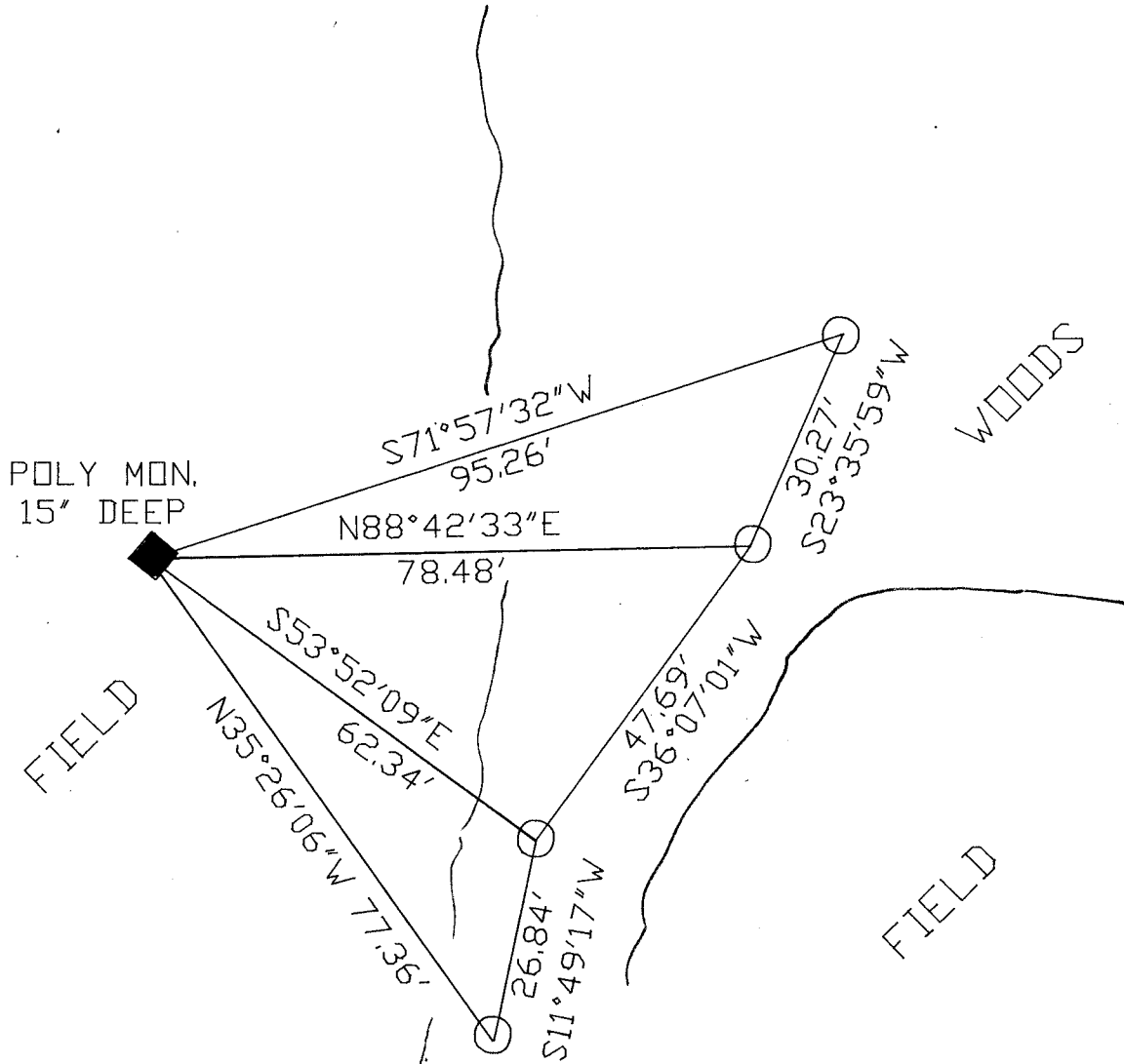
IF AVAILABLE
STATE PLANE COORDINATES

North (Y) _____ Eleve. (Z) _____
 East (X) _____ Zone _____
 Hor. Datum _____ Vert. Datum _____

◆ CORNER MONUMENT

○ WITNESS MONUMENT

BEARINGS ARE BASED ON: TWP PROJECT



○ 3/4X24" REROD WITH ORANGE
PLASTIC CAP

FIELD BOOK #3 PG 22

MICROFILMED

SHEET 1 OF 2

CORNER CODE: N 15

(B) Describe any record evidence, monument evidence, occupational evidence, testimonial evidence or any other material evidence you considered, and whether the monument was found or placed.

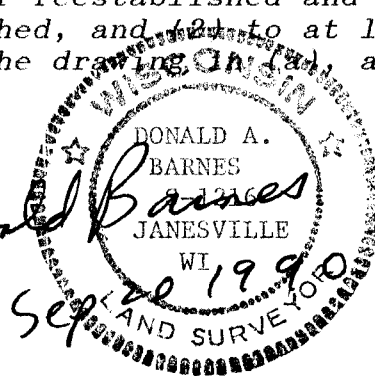
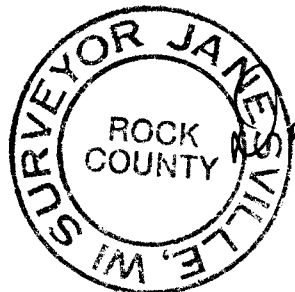
- 1834 HARRISON. ORIGINAL GOVERNMENT SURVEYOR. FIELD NOTES. 1495.56 TO MEANDER POST ON WEST BANK.
- 1836 LYON WEST LINE BETWEEN SECTIONS 15 & 22. 2640 SET QUARTER CORNER SECTION POST. BUR OAK 9 S63W 54 AND BURR OAK 12 N4W 163. 3379.20' TO ROCK RIVER COURSE SW & SET POST ON LEFT BANK. BUR OAK 28 N16E 3.45 AND BUR OAK 14 S60E 3.21. 3759.36 POST ON RIGHT BANK OF ROCK RIVER.
- 1861 RUGER VOL 1 PG 168. SHOWS 2649.90 TO THE SE CORNER OF SECTION 15.
- 1954 BAKER SHOWS PIPE IN ROAD AS BEING ON SOUTH LINE OF SECTION 15.
- 1956 BATTERMAN JR. SHOWS PIPE IN ROAD AS BEING ON SOUTH LINE OF SECTION 15. SHOWS 2064.00 TO 1/16th CORNER TO THE EAST. ALSO SHOWS TWO PIPES AT THE 1/16th CORNER.
- 1962 THOM SHOWS 1866.51 FROM THE PIPE IN THE ROAD TO THE 1/16th CORNER THAT IS TO THE EAST. ALSO SHOWS 1330.80 FROM THE 1/16th TO THE SE CORNER. STATES THAT AT THE 1/16th HE FOUND PIPE PREVIOUSLY SET AT SE CORNER OF GOVERNMENT LOT & HAD BEEN DESTROYED BY FENCE CONSTRUCTION. RESET CORNER WITH 1" PIPE. ALSO FOUND PIPE SET 6.36 WEST AT THE TRUE 1/16 HAD BEEN DISTURBED. RESET. CALLS FOR THE SOUTH LINE OF SECTION 15 AS PIPE IN ROAD TO 1/16th CORNER.
- 1964 BATTERMAN JR. FOUND 1" PIPE AT S 1/4 CORNER OF SECTION 15. SHOWS 2647.31 TO THE SE CORNER. PLAT OF SURVEY FOR WIS STATE AERO. COM.
- 1964 LEE SHOWS 3400.94 FROM PIPE IN ROAD TO SE CORNER OF SECTION 15. CALLS FOR THIS LINE AS THE SOUTH LINE OF SECTION 15.
- 19?? BATTERMAN SHOWS AN ANGLE OF 89-28-50 AT THE SE CORNER OF SECTION 15 FROM THE S 1/16TH OF THE SE 1/4 OF SECTION 15 TO THE E 1/4 CORNER OF SECTION 15.

AFTER REVIEWING OLD AIR PHOTOS, IT IS APPARENT THAT THE FENCE LINE AND CORNER WERE DESTROYED. PLACED POLY MONUMENT 15" DEEP. CORNER WAS ESTABLISHED ON LINE WITH THE PIPE IN SOUTH RIVER ROAD AND THE SE CORNER OF SECTION 15 AT BATTERMAN'S RECORD DISTANCE OF 2647.31 FROM THE SE CORNER OF SECTION 15. THE DISTANCE TO FOUND PIPE IN SOUTH RIVER ROAD TO THE S 1/4 CORNER OF SECTION 15 IS 747.74 AND 3395.05 TO THE SE CORNER OF SECTION 15.

C) Was the corner restored through acceptance of (1) an obliterated evidence location, or, (2) a found perpetuated location?

ACCEPTED OBLITERATED EVIDENCE LOCATION.

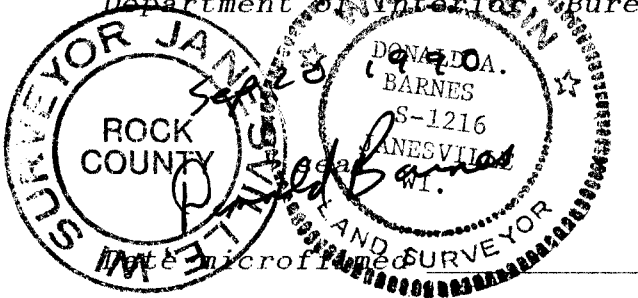
D) Describe any material discrepancy between the location of the corner as restored or reestablished and the location of that corner as previously restored or reestablished by distance and direction. Show the discrepancy on the plan view drawing under (a), above. Show the distances between the corner as previously restored or reestablished and (1) the corner as restored or reestablished, and (2) to at least 4 of the witness monuments shown on the drawing (a), above.



N 15

(E) Was the corner reestablished through lost corner proportionate methods? If so, show the method, including the directions and distances to other public land survey corners used as evidence or used for proportioning the corner location.

I, Donald Barnes, hereby certify that the corner points as identified by the corner code index were, in a field survey on, July 1 20, 1990, established, re-established, monumented, re-monumented, recovered or restored as expressed below and in conformance with the regulations and rules as required in the current manual of survey instructions of the United States Department of Interior Bureau of Land Management.



COUNTY SURVEYOR FILING DATA

Date of computer entry _____

Number of included sheets 1
CORNER CODE
N 15

AFFIX YOUR LAND SURVEYOR SEAL

N 15