

# U.S. PUBLIC LAND SURVEY MONUMENT RECORD

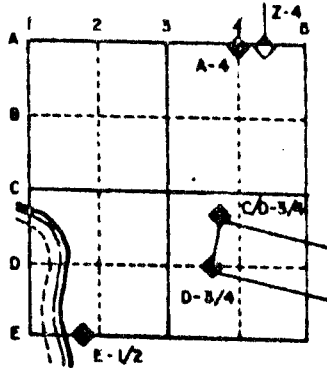
For Public Land Survey Corners in the  
T. 2 N., R. 12 E.

## CORNER CODE INDEX

	1	2	3	4	5	6	7	8	9	10	11	12	13	14	15	16	17	18	19	20	21	22	23	24	25
A																									
B																									
C	6																								
D		5																							
E			4																						
F				3																					
G					2																				
H																									
I																									
J	7																								
K		8																							
L			9																						
M				10																					
N					11																				
O						12																			
P							13																		
Q								14																	
R									15																
S										16															
T											17														
U												18													
V													19												
W														20											
X															21										
Y																22									
Z																	23								
																		24							
																			25						
																				26					
																					27				
																						28			
																							29		
																								30	
																									31
																									32
																									33
																									34
																									35
																									36

PLACE MONUMENT SYMBOL (◆) AT PROPER LOCATION ON ABOVE INDEX

### EXAMPLE



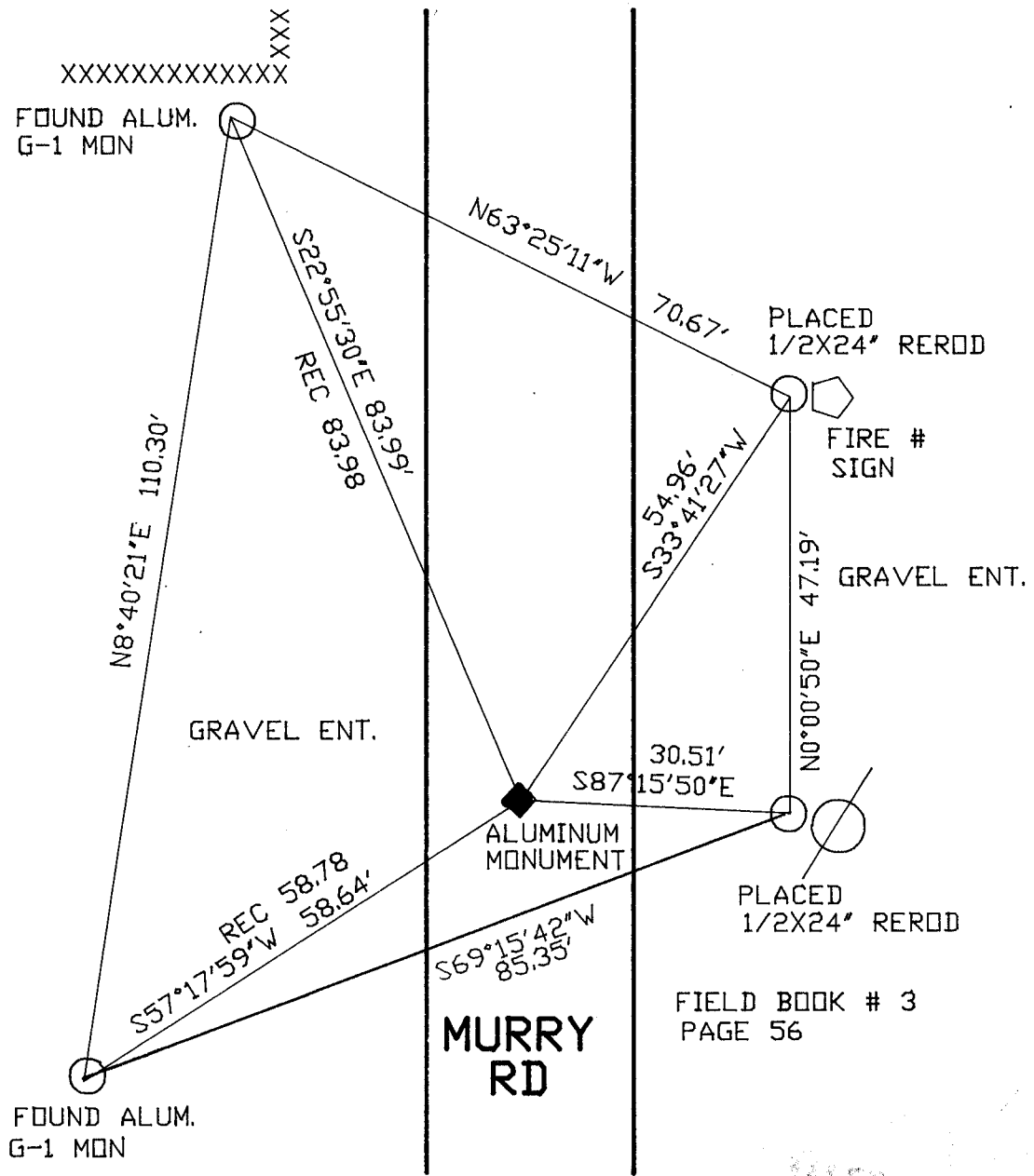
ROCK TWP  
ROCK COUNTY WI

IF AVAILABLE  
STATE PLANE COORDINATES

NAD North (Y) 230,175.43 Elev. (Z) \_\_\_\_\_  
 27 East (X) 2,239,526.29 Zone \_\_\_\_\_  
 Hor. Datum \_\_\_\_\_ Vert. Datum \_\_\_\_\_  
 WPL 230,174.44  
2,239,520.85

◆ CORNER MONUMENT      ○ WITNESS MONUMENT

BEARINGS ARE BASED ON: ASSUMED



SHEET \_\_\_ OF \_\_\_

CORNER CODE: N 5

(B) Describe any record evidence, monument evidence, occupational evidence, testimonial evidence or any other material evidence you considered, and whether the monument was found or placed.

- 1834 HARRISON ORIGINAL GOVERNMENT SURVEYOR. FIELD NOTES - COR TO SECTION 17,18,19,20. BURR OAK 10 S35E 70, BURR OAK 12 S18W 31, BURR OAK 12 N24W 53, AND BUR OAK 12 N48E 131.
- 1860 RUGER VOL 1 PG 128 SHOWS A DISTANCE OF 2660.46 TO THE S 1/4 CORNER OF SECTION 17.
- 1883 LEE VOL 2 PG 365. BEARING TREES GONE FOUND ROOTS OF SW BEARING TREE AND OLD STAKE AT CORNER. SET RED HARD HEAD 14X13X4 SURROUNDED BY SMALL HARDHEADS. SHOWS A DISTANCE OF 2631.42 TO E 1/4 CORNER OF SECTION 19.
- 1964 VOL 4 PG 199 FOUND IRON PIPE. SHOWS COORDINATES OF N/S 230,174.44 E/W 2,239,520.85.
- 1964 BATTERMAN JR. DUG LARGE HOLE 10X8X4 AND FOUND NOTHING.
- 1968 BATTERMAN JR. VOL 4 PG 358 FOUND 1" PIPE SET BY R.L. THOM. REFERENCED SAME. WPL COORDINATES OF N/S 230,174.44 E/W 2,239,520.85
- 1974 LEE VOL 4 PG 589 N01-13-52W 2649.64
- 1975 BARNES VOL 5 PG 105 PLACED BERNTSEN ALUMINUM MONUMENT. ORIGINAL CORNER MONUMENT AND ACCESSORY MONUMENTS WERE REMOVED BY ROAD CONSTRUCTION. USED CSM VOL 4 PG 161 AND CSM VOL 4 PG 289 TO REESTABLISH CORNER.
- 1976 TRUE. SHOWS A DISTANCE OF 2647.60 TO S 1/4 CORNER OF SECTION 18.

FOUND ALUMINUM MONUMENT.

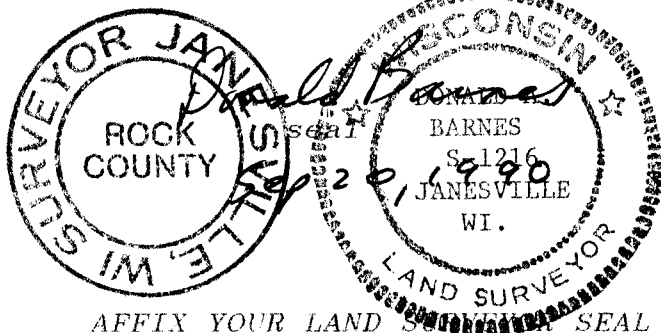
C) Was the corner restored through acceptance of (1) an obliterated evidence location, or, (2) a found perpetuated location?

ACCEPTED FOUND PERPETUATED LOCATION.

D) Describe any material discrepancy between the location of the corner as restored or reestablished and the location of that corner as previously restored or reestablished by distance and direction. Show the discrepancy on the plan view drawing under (a), above. Show the distances between the corner as previously restored or reestablished and (1) the corner as restored or reestablished, and (2) to at least 4 of the witness monuments shown on the drawing in (a), above.

(E) Was the corner reestablished through lost corner proportionate methods? If so, show the method, including the directions and distances to other public land survey corners used as evidence or used for proportioning the corner location.

I, Donald Barnes, hereby certify that the corner points as identified by the corner code index were, in a field survey on, JULY 21, 1989, established, re-established, monumented, re-monumented, recovered or restored as expressed below and in conformance with the regulations and rules as required in the current manual of survey instructions of the United States Department of Interior, Bureau of Land Management.



COUNTY SURVEYOR FILING DATA  
Date of computer entry \_\_\_\_\_  
Date microfilmed \_\_\_\_\_  
Number of included sheets \_\_\_\_\_  
CORNER CODE

AFFIX YOUR LAND SURVEYOR SEAL

N5