

# U.S. PUBLIC LAND SURVEY MONUMENT RECORD

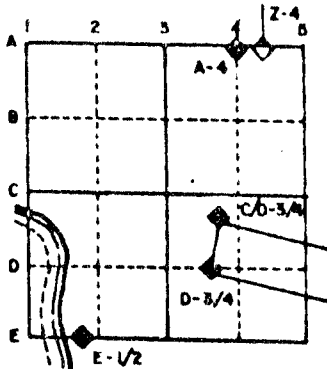
For Public Land Survey Corners in the  
T. 2 N., R. 12 E.

## CORNER CODE INDEX

	1	2	3	4	5	6	7	8	9	10	11	12	13	14	15	16	17	18	19	20	21	22	23	24	25
A																									
B																									
C	6																								
D		5																							
E			4																						
F				3																					
G					2																				
H																									
I																									
J	7																								
K		8																							
L			9																						
M				10																					
N					11																				
O						12																			
P																									
Q																									
R																									
S																									
T																									
U																									
V																									
W																									
X																									
Y																									
Z																									

PLACE MONUMENT SYMBOL (◆) AT PROPER LOCATION ON ABOVE INDEX

### EXAMPLE



ROCK TWP  
ROCK COUNTY WI

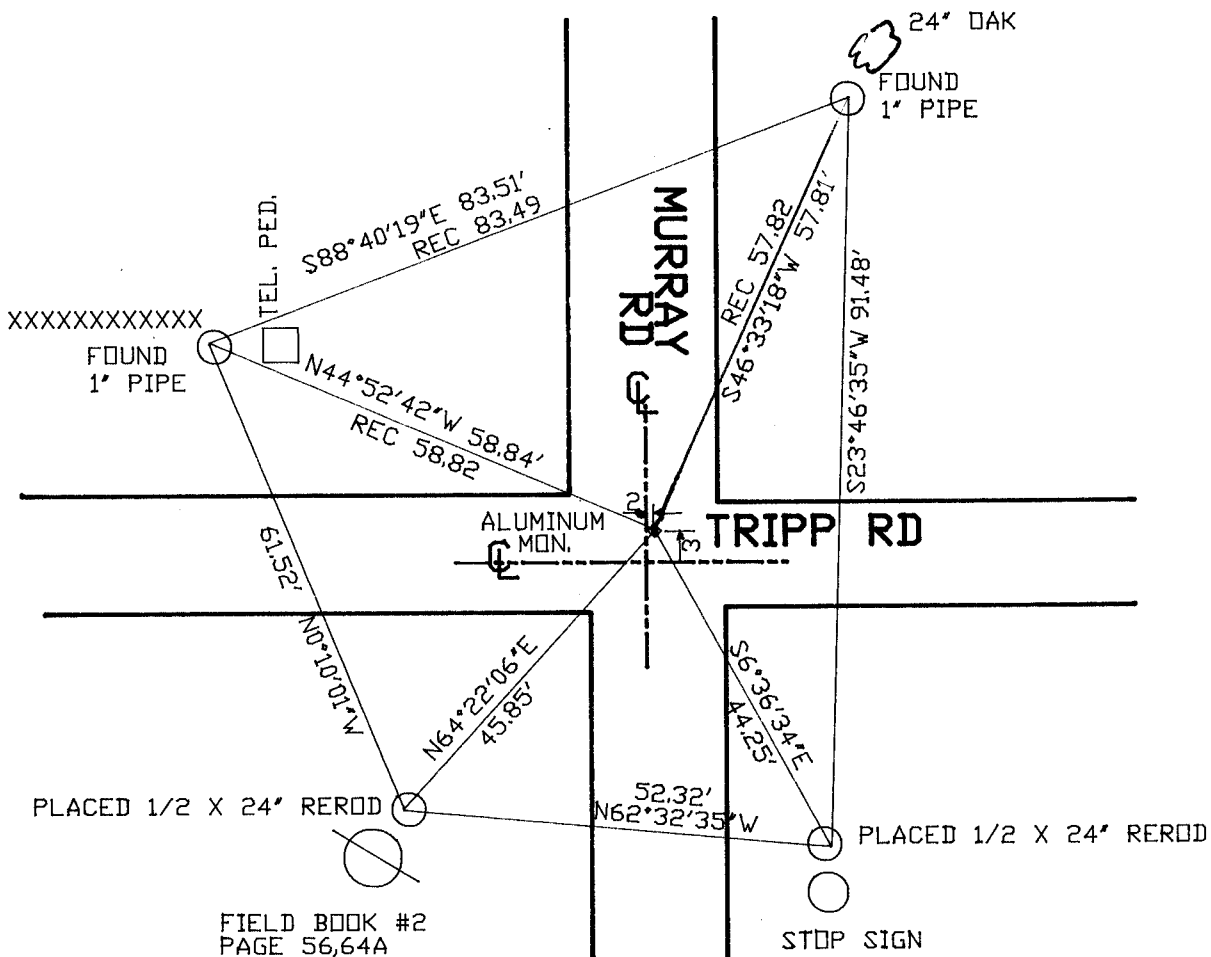
IF AVAILABLE  
STATE PLANE COORDINATES

NAD 27 North (Y) 232,811.36 Eleve. (Z) \_\_\_\_\_  
 East (X) 2,239,460.20 Zone \_\_\_\_\_  
 Hor. Datum \_\_\_\_\_ Vert. Datum \_\_\_\_\_  
 WPL 232,809.34  
 2,239,460.02

◆ CORNER MONUMENT

○ WITNESS MONUMENT

BEARINGS ARE BASED ON: ASSUMED



SHEET \_\_\_ OF \_\_\_

CORNER CODE: L5

(B) Describe any record evidence, monument evidence, occupational evidence, testimonial evidence or any other material evidence you considered, and whether the monument was found or placed.

- 1834 HARRISON ORIGINAL GOVERNMENT SURVEYOR. FIELD NOTES - BURR O. 10 N44W 41; BUR O. 10 S53E 70
- 1860 RUGER VOL 1 PG 128 STATES NOTHING ABOUT CORNER. SHOWS A DISTANCE OF 2680.26 TO CENTER OF SECTION 17.
- 1868 UNKNOWN VOL 1 PG 321 FOUND STUMPS OF BEARING TREES AND OLD STAKE. SET BR. O. STAKE WITH HARD HEAD ON NORTH, SOUTH, & EAST AND LIMESTONE ON W. STUMP OF BR. O. 12 NE 8
- 1964 BATTERMAN VOL 4 PG 199 DUG LARGE HOLE AND FOUND NOTHING. SHOWS WPL COORDINATES OF N/S 232,809.34; E/W 2,239,460.02
- 1974 LEE VOL 4 PG 589 FOUND 1" PIPE. SHOWS A DISTANCE AND BEARING TO THE FOLLOWING CORNERS IN SECTION 18:  
TO SE S1-13-52E 2649.64  
NE N1-13-52E 2649.64
- 1973 LEE VOL 5 PG 16. AT W 1/4 CORNER OF SECTION 17 FOUND NOTHING. SET CORNER BY PRORATION. DOES NOT STATE THE TYPE OF MONUMENT THAT HE PLACED. REFERENCED SAME.
- 1976 BARNES VOL 5 PG 186 SHOWS A DISTANCE OF 2643.78 TO CENTER OF SECTION 18.

FOUND 1 1/4" X 24" IRON PIPE. REPLACED PIPE WITH ALUMINUM MONUMENT.

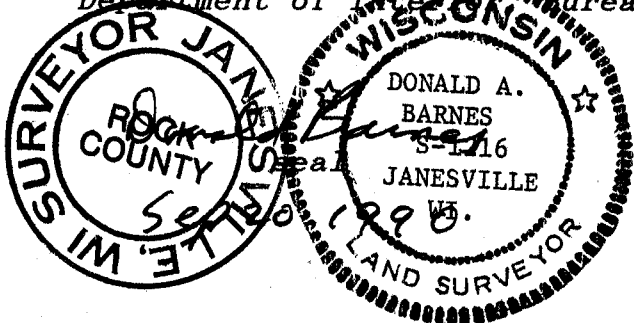
C) Was the corner restored through acceptance of (1) an obliterated evidence location, or, (2) a found perpetuated location?

ACCEPTED FOUND PERPETUATED LOCATION.

D) Describe any material discrepancy between the location of the corner as restored or reestablished and the location of that corner as previously restored or reestablished by distance and direction. Show the discrepancy on the plan view drawing under (a), above. Show the distances between the corner as previously restored or reestablished and (1) the corner as restored or reestablished, and (2) to at least 4 of the witness monuments shown on the drawing in (a), above.

(E) Was the corner reestablished through lost corner proportionate methods? If so, show the method, including the directions and distances to other public land survey corners used as evidence or used for proportioning the corner location.

I, Donald Barnes, hereby certify that the corner points as identified by the corner code index were, in a field survey on, JUNE 30, 1989 established, re-established, monumented, re-monumented, recovered or restored as expressed below and in conformance with the regulations and rules as required in the current manual of survey instructions of the United States Department of Interior Bureau of Land Management.



COUNTY SURVEYOR FILING DATA

Date of computer entry \_\_\_\_\_

Date microfilmed \_\_\_\_\_

Number of included sheets \_\_\_\_\_  
CORNER CODE

AFFIX YOUR LAND SURVEYOR SEAL

LS