

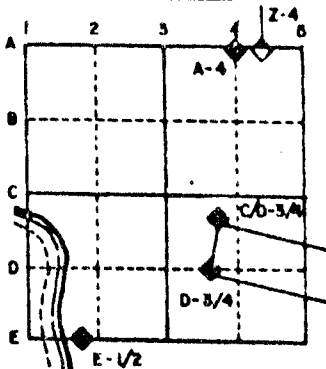
U.S. PUBLIC LAND SURVEY MONUMENT RECORD

For Public Land Survey Corners in the
T. 2 N., R. 12 E.

CORNER CODE INDEX

	1	2	3	4	5	6	7	8	9	10	11	12	13	14	15	16	17	18	19	20	21	22	23	24	25
A																									
B																									
C																									
D																									
E																									
F																									
G																									
H																									
I																									
J																									
K																									
L																									
M																									
N																									
O																									
P																									
Q																									
R																									
S																									
T																									
U																									
V																									
W																									
X																									
Y																									
Z																									

EXAMPLE



ROCK TWP
ROCK COUNTY WI

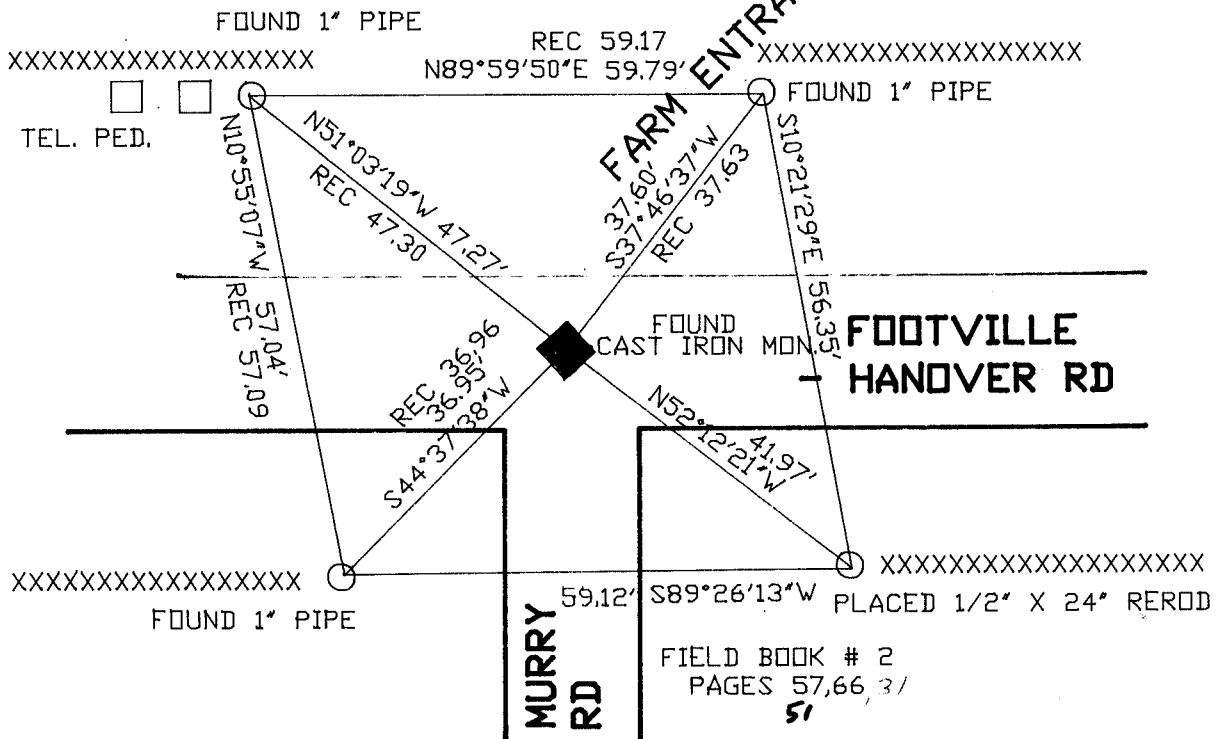
IF AVAILABLE
STATE PLANE COORDINATES

North (Y) 240,758.29 Eleve. (Z) _____
 East (X) 2,239,310.95 Zone _____
 Hor. Datum _____ Vert. Datum _____
 WPL 240,755.90
2,239,312.09

PLACE MONUMENT SYMBOL (◆) AT PROPER LOCATION ON ABOVE INDEX

◆ CORNER MONUMENT
CAST IRON
○ WITNESS MONUMENT

BEARINGS ARE BASED ON: ASSUMED



SHEET _____ OF _____

CORNER CODE: E 5

(B) Describe any record evidence, monument evidence, occupational evidence, testimonial evidence or any other material evidence you considered, and whether the monument was found or placed.

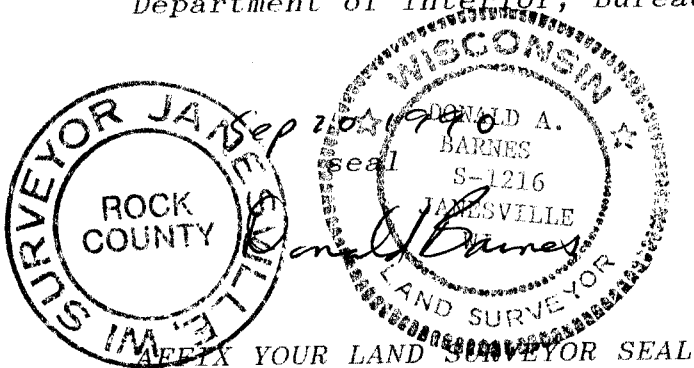
- 1834 HARRISON ORIGINAL GOVERNMENT SURVEYOR. FIELD NOTES - CORNER TO SECTIONS 5,6,7,8. BTs RED OAK 8 S89E 78, RED OAK 8S50W 10, RED OAK 8 N40E 12, CHERRY 8 N47W 25.
- 1854 McVEAN VOL 1 PG 23 STATES NOTHING ABOUT THE CORNER. SHOWS A DISTANCE OF 2616.90' TO THE E 1/4 CORNER OF SEC 6 AND 2644.62 TO S 1/4 CORNER OF SECTION 6.
- 1866 LOCKE VOL 1 PG 266 BEARING TREES GONE. FOUND OLD STAKE SET BURR OAK STAKE WITH HARD HEAD ON N,S, AND E AND LIMESTONE ON WEST.
- 1868 LOCKE VOL 1 PG 314. FOUND CORNER AS SET BY SELF. SHOWS A DISTANCE OF 2656.50 TO S 1/4 CORNER OF SECTION 6.
- 1870 RUGER VOL 2 PG 43. FOUND LIMESTONE SURROUNDED BY LIMESTONES AT CORNER. ALSO FOUND WHERE STUMPS OF BEARING TREES HAD BEEN DUG UP.
- 1879 RUGER VOL 2 PG 261. FOUND CORNER AS SET BY LOCKE CORRECT.
- 1972 LEE VOL 4 PG 570. DUG AND FOUND LIMESTONE SURROUNDED BY HARDHEAD. REFERENCED SAME. SHOWS WPL COORDINATES: N/S 240,755.91; E/W 2,239,312.09
- 1972 LEE VOL 4 PG 580 DUG AND FOUND LIMESTONE SURROUNDED BY 3 HARDHEADS. SET CAST IRON MONUMENT AND REFERENCED. SHOWS EXISTING REFERENCE TIES.
- 1972 LEE VOL 4 PG 588. SHOWS S01-06-23E 2649.08 TO W 1/4 CORNER OF SECTION 7.
- 1980 BARNES VOL 6 PG 29. SHOWS RECORD DISTANCES AND S1-01-27E 5298.24 TO SE CORNER OF SECTION 7.
FOUND CAST IRON MONUMENT.

C) Was the corner restored through acceptance of (1) an obliterated evidence location, or, (2) a found perpetuated location?
ACCEPTED FOUND MONUMENT.

D) Describe any material discrepancy between the location of the corner as restored or reestablished and the location of that corner as previously restored or reestablished by distance and direction. Show the discrepancy on the plan view drawing under (a), above. Show the distances between the corner as previously restored or reestablished and (1) the corner as restored or reestablished, and (2) to at least 4 of the witness monuments shown on the drawing in (a), above.

(E) Was the corner reestablished through lost corner proportionate methods? If so, show the method, including the directions and distances to other public land survey corners used as evidence or used for proportioning the corner location.

I, Donald Barnes, hereby certify that the corner points as identified by the corner code index were, in a field survey on, July 18, 1990, established, re-established, monumented, re-monumented, recovered or restored as expressed below and in conformance with the regulations and rules as required in the current manual of survey instructions of the United States Department of Interior, Bureau of Land Management.



COUNTY SURVEYOR FILING DATA
 Date of computer entry _____
 Date microfilmed _____
 Number of included sheets _____
 CORNER CODE
 E5