

U.S. PUBLIC LAND SURVEY MONUMENT RECORD

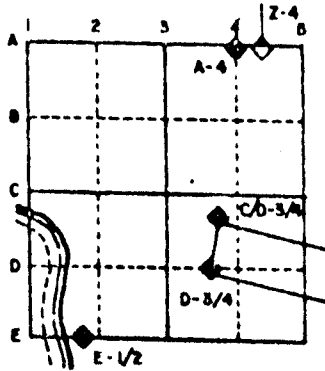
For Public Land Survey Corners in the
T. 2 N., R. 12 E.

CORNER CODE INDEX

	1	2	3	4	5	6	7	8	9	10	11	12	13	14	15	16	17	18	19	20	21	22	23	24	25
A																									
B																									
C	6	5	4	3	2																				
D																									
E																									
F																									
G	7	8	9	10	11	12																			
H																									
I																									
J																									
K	16	17	18	15	14	13																			
L																									
M																									
N																									
O																									
P	19	20	21	22	23	24																			
Q																									
R																									
S																									
T	30	29	28	27	26	25																			
U																									
V																									
W																									
X	31	32	33	34	35	36																			
Y																									
Z																									

PLACE MONUMENT SYMBOL (●) AT PROPER LOCATION ON ABOVE INDEX

EXAMPLE



ROCK TWP
ROCK COUNTY WI

IF AVAILABLE STATE PLANE COORDINATES

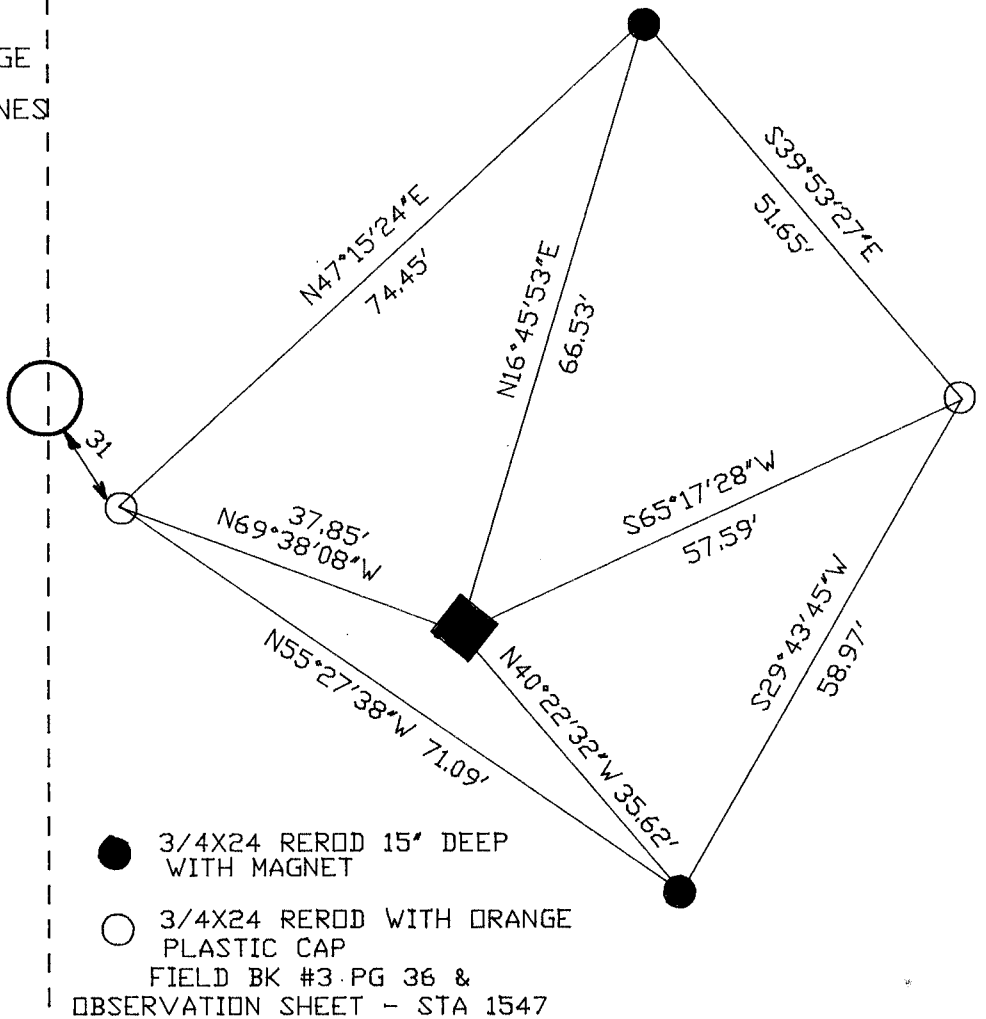
North (Y) _____ Eleve. (Z) _____
 East (X) _____ Zone _____
 Hor. Datum _____ Vert. Datum _____

◆ CORNER MONUMENT
Placed poly

○ WITNESS MONUMENT

BEARINGS ARE BASED ON: ROCK TWP PROTECT

HIGH VOLTAGE
ELECTRIC LINES



MICROFILMED
SHEET OF

CORNER CODE: C5

(B) Describe any record evidence, monument evidence, occupational evidence, testimonial evidence or any other material evidence you considered, and whether the monument was found or placed.

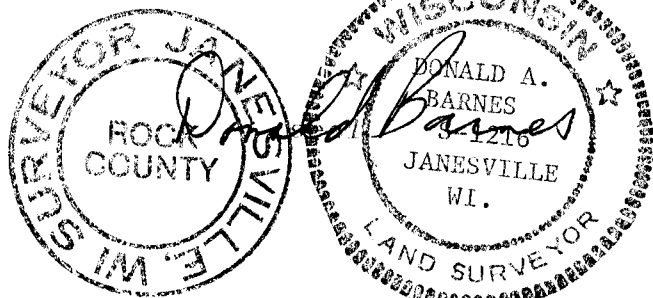
- 1834 HARRISON ORIGINAL GOVERNMENT SURVEYOR. FIELD NOTES - SET POST AND RAISED MOUND. SHOWS A DISTANCE OF 2721.84' TO THE NW CORNER OF SECTION 5 AND 2640 TO THE SW CORNER OF SECTION 5.
- 1854 McVEAN VOL 1 PG 23 QUARTER POST BURR OAK 20 S 57 1/2 W 8.02 & BURR OAK 15 S 37 W 7.45. SHOWS A DISTANCE OF 5283.30 TO W 1/4 CORNER OF SECTION 6.
- 1855 CHURCH VOL 1 PG 37. BURR OAK 24 N 17 1/2 W 15.55 LINKS, BURR OAK 14 S 38 1/4 W 7.77 LINKS. REMARKS: I FIND ON THE RECORD A SURVEY BY P. McVEAN OF THE SAME LINE WHICH IS ENTIRELY WRONG. THE SYSTEM OF HIS SURVEYING DOES NOT CORRESPOND WITH MINE. I FIND THE STAKE EQUALLY DIVIDED AND BEING ON THE NORTH TOWN LINE WHERE SECTION OVER RUNS.
- 1866 LOCKE VOL 1 PG 265 POST AT JUNCTION OF FENCES ON CORNER. DISTANCE TO CENTER OF SECTION 6: 2656.17'.
- 1867 LEE VOL 1 PG 333 FOUND FENCE POST AT CORNER.
- 1870 RUGER VOL 2 PG 43 FOUND STUMPS OF BEARING TREES TAKEN BY McVEAN. FENCE POST AT INTERSECTION OF FENCES AT CORNER.
- 1881 LEE VOL 2 PG 322 SET SIGHT POLE FOR RANGE. FOUND THE STUMPS OF BEARING TREES TAKEN BY Mc VEAN AND FENCE POST AT CORNER.
- 1974 LEE VOL 5 PG 53 SHOWS A DISTANCE OF 2656.85 TO CENTER OF SECTION 6.
- 1975 SCHROEDER VOL 5 PG 111. FOUND OLD FENCE POST SET BY LOCKE IN 1866. SHOWS A DISTANCE OF 2656.33 TO THE CENTER OF SECTION 6.

AREA HAS BEEN DISTURBED BY HEAVY EQUIPMENT. FENCES WERE REMOVED. ESTABLISHED LOCATION BY USING SHROEDER'S DISTANCE (2656.33) TO THE PIPE AT THE CENTER OF SECTION AND THE PRORATED DISTANCE FROM THE SE CORNER OF SECTION 6. I USED THE ORIGINAL GOVERNMENT DISTANCES FOR PRORATION OF THE SE CORNER OF SECTION 6 TO THE NE CORNER OF SECTION 6. THIS LOCATION IS IN HARMONY WITH RECORD DISTANCES IN SECTION 6 AND 5.

C) Was the corner restored through acceptance of (1) an obliterated evidence location, or, (2) a found perpetuated location?
RESTORED CORNER THROUGH ACCEPTANCE OF OBLITERATED EVIDENCE LOCATION.

D) Describe any material discrepancy between the location of the corner as restored or reestablished and the location of that corner as previously restored or reestablished by distance and direction. Show the discrepancy on the plan view drawing under (a), above. Show the distances between the corner as previously restored or reestablished and (1) the corner as restored or reestablished, and (2) to at least 4 of the witness monuments shown on the drawing in (a), above.

I, Donald Barnes, hereby certify that the corner points as identified by the corner code index were, in a field survey on, October 3, 1990, established, re-established, monumented, re-monumented, recovered or restored as expressed below and in conformance with the regulations and rules as required in the current manual of survey instructions of the United States Department of Interior, Bureau of Land Management.



AFFIX YOUR LAND SURVEYOR SEAL

COUNTY SURVEYOR FILING DATA
Date of computer entry _____
Date microfilmed _____
Number of included sheets _____
CORNER CODE

C5