

ROCK COUNTY, WISCONSIN



**PUBLIC SAFETY & JUSTICE COMMITTEE
MONDAY – MAY 21, 2018 - 4:00 P.M.
CONFERENCE ROOM N-1 - FIFTH FLOOR
ROCK COUNTY COURTHOUSE-EAST**

Agenda

1. Call to Order
2. Adoption of Agenda
3. Citizen Participation, Communications, Announcements, Information
4. Approval of Minutes – May 7, 2018
5. Consent Calendar
 - A. Transfers
6. Resolutions
 - A. Recognizing Correctional Officer Mary K. Vukovich
7. Updates
 - A. Discussion on Emergency Management Siren System
8. Committee Requests and Motions
9. Adjournment

RESOLUTION

ROCK COUNTY BOARD OF SUPERVISORS

SHERIFF ROBERT D. SPODEN
INITIATED BY



CHIEF DEPUTY BARBARA J. TILLMAN
DRAFTED BY

PUBLIC SAFETY & JUSTICE
SUBMITTED BY

MAY 3, 2018
DATE DRAFTED

RECOGNIZING CORRECTIONAL OFFICER MARY K. VUKOVICH

1 **WHEREAS**, Mary K. Vukovich began her employment with Rock County on December 18, 2000, as a
2 Psychiatric Technician at Rock County Human Services. She then moved to the Juvenile Detention
3 Center, first as a Relief Juvenile Detention Officer on April 9, 2001, then as a full-time Juvenile
4 Detention Officer on June 10, 2001. She worked as a Community Juvenile Officer at the Juvenile
5 Detention Center starting on April 13, 2009. Mary K. Vukovich was hired as a Correctional Officer at
6 the Rock County Sheriff's Office on January 31, 2011; and,
7

8 **WHEREAS**, Correctional Officer Vukovich has worked exclusively in the Correctional Services
9 Division; and,
10

11 **WHEREAS**, throughout her tenure with the Sheriff's Office, Correctional Officer Vukovich has served
12 under two Sheriffs over the course of her career: Sheriffs Eric Runaas, and Robert Spoden; and,
13

14 **WHEREAS**, Correctional Officer Vukovich has received numerous commendations and letters of
15 appreciation; and,
16

17 **WHEREAS**, Correctional Officer Vukovich will retire from public service on June 2, 2018.
18

19 **NOW, THEREFORE, BE IT RESOLVED** that the Rock County Board of Supervisors duly
20 assembled this _____ day of _____, 2018, does hereby recognize Correctional Officer
21 Mary K. Vukovich for her over 17 years of faithful service and recommends that a sincere expression of
22 appreciation be given to Correctional Officer Mary K. Vukovich along with best wishes for the future.

Respectfully submitted,

PUBLIC SAFETY & JUSTICE COMMITTEE

COUNTY BOARD STAFF COMMITTEE

Mary Beaver, Chair

J. Russell Podzilni, Chair

Kara Hawes

Mary Mawhinney, Vice Chair

Terry Fell

Henry Brill

Brian Knudson

Betty Jo Bussie

Phillip Owens

Louis Peer

Alan Sweeney

Terry Thomas

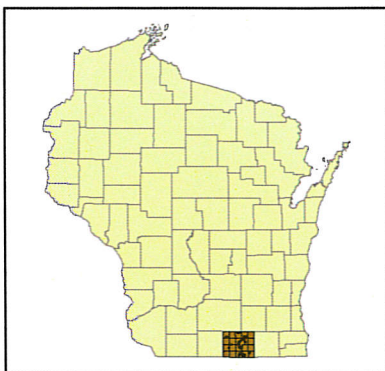
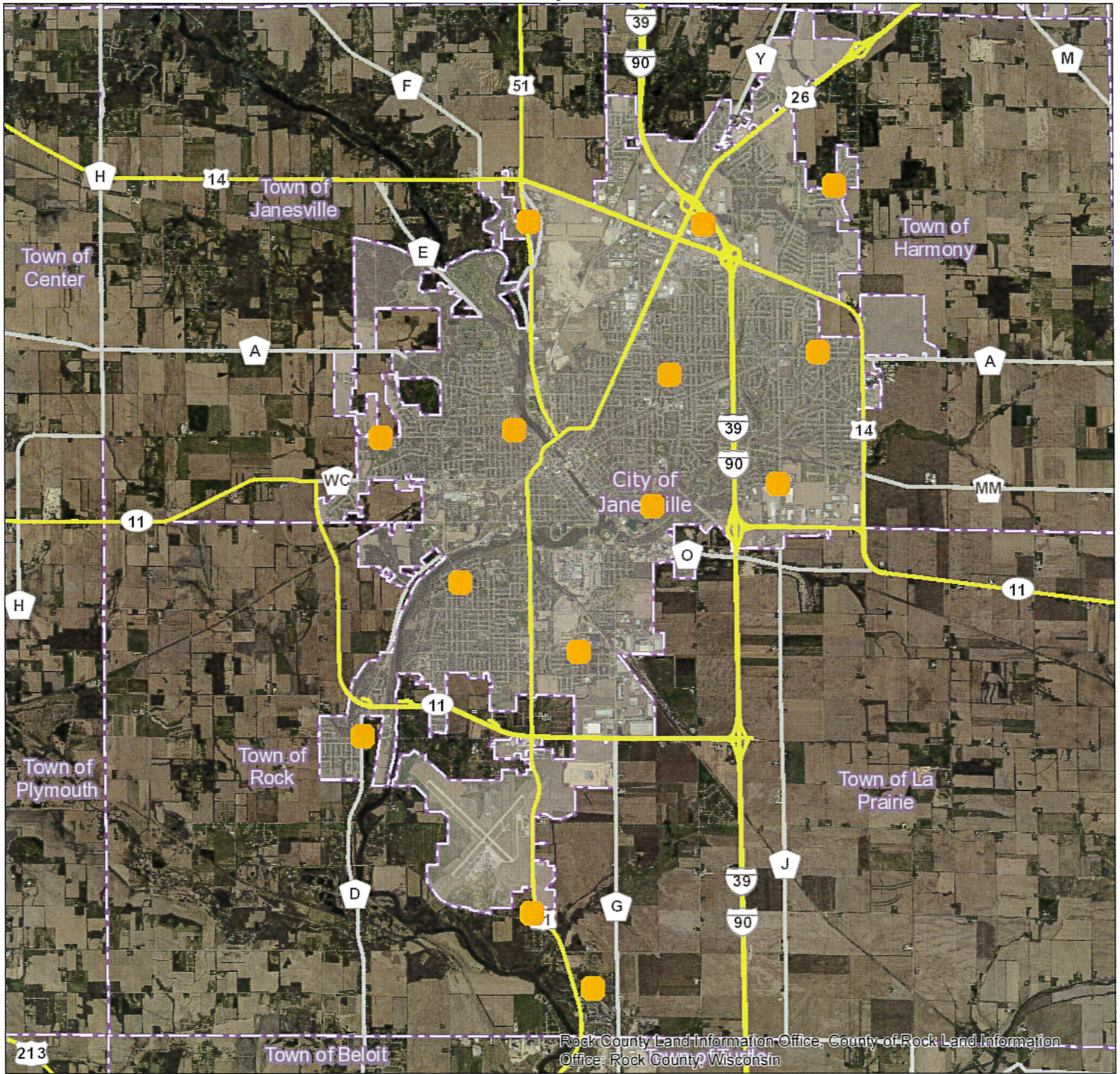
Bob Yeomans


Richard Bostwick

18-5B-021

City of Janesville Emergency Sirens

Rock County, Wisconsin



 Sirens

5/11/2018

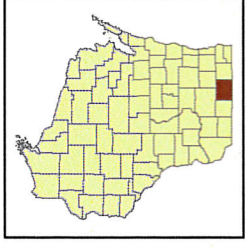
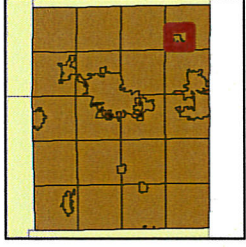
Duplication of this map is prohibited without written consent of the Rock County Planning, Economic and Community Development Agency. The data in this map was compiled using the Rock County Coordinate System. All graphic and attribute information is based on the Rock County Coordinate system. This map is not intended to be a substitute for an actual field survey and is an advisory reference only.

Rock County Geographic Information Systems (GIS)
Planning, Economic and Community
Development Agency



51 S Main St, Janesville, WI 53545
(TEL) 608-757-5587, (FAX) 608-757-5586
email: Planning@co.rock.wi.us





Data Sources: Rock County Planning and Development Agency. Imagery Date: 2010

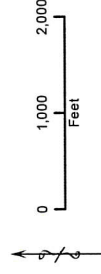


7/24/2017

Siren 30: Current and Potential Range

Town of Clinton
Rock County, Wisconsin

-  Siren
-  Current Range
-  Potential Range
-  Town Boundary Lines



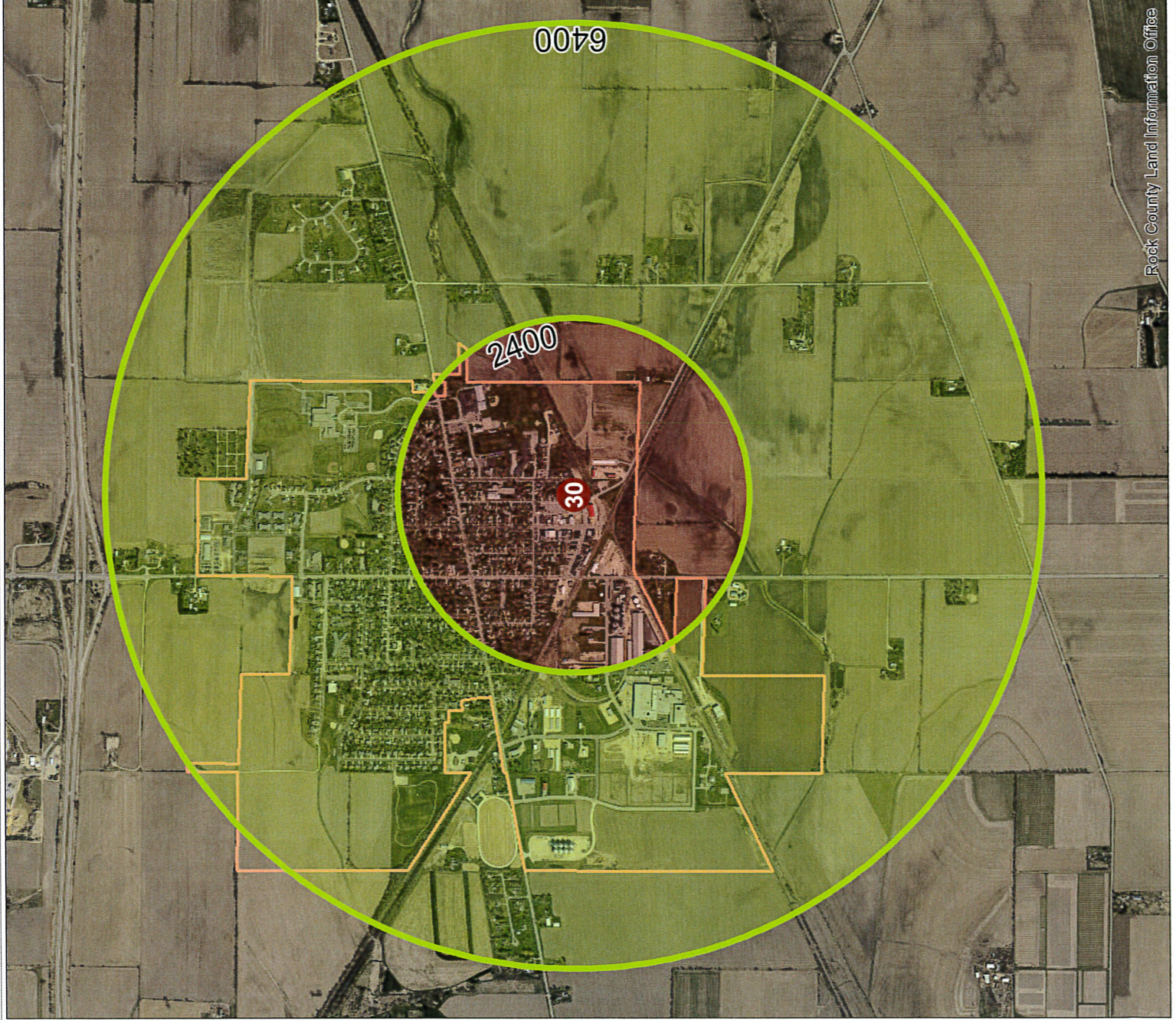
Duplication of this map is prohibited without written consent of the Rock County Planning, Economic and Community Development Agency. The data in this map was compiled using the Rock County Coordinate System. All graphic and attribute information is based on the Rock County Coordinate system. This map is not intended to be a substitute for an actual field survey and is an advisory reference only.

Rock County Geographic Information Systems (GIS)
Planning, Economic and Community
Development Agency



51 S Main St., Janesville, WI 53545
(TEL) 608-737-5387, (FAX) 608-737-5386
email: Planning@co.rock.wi.us

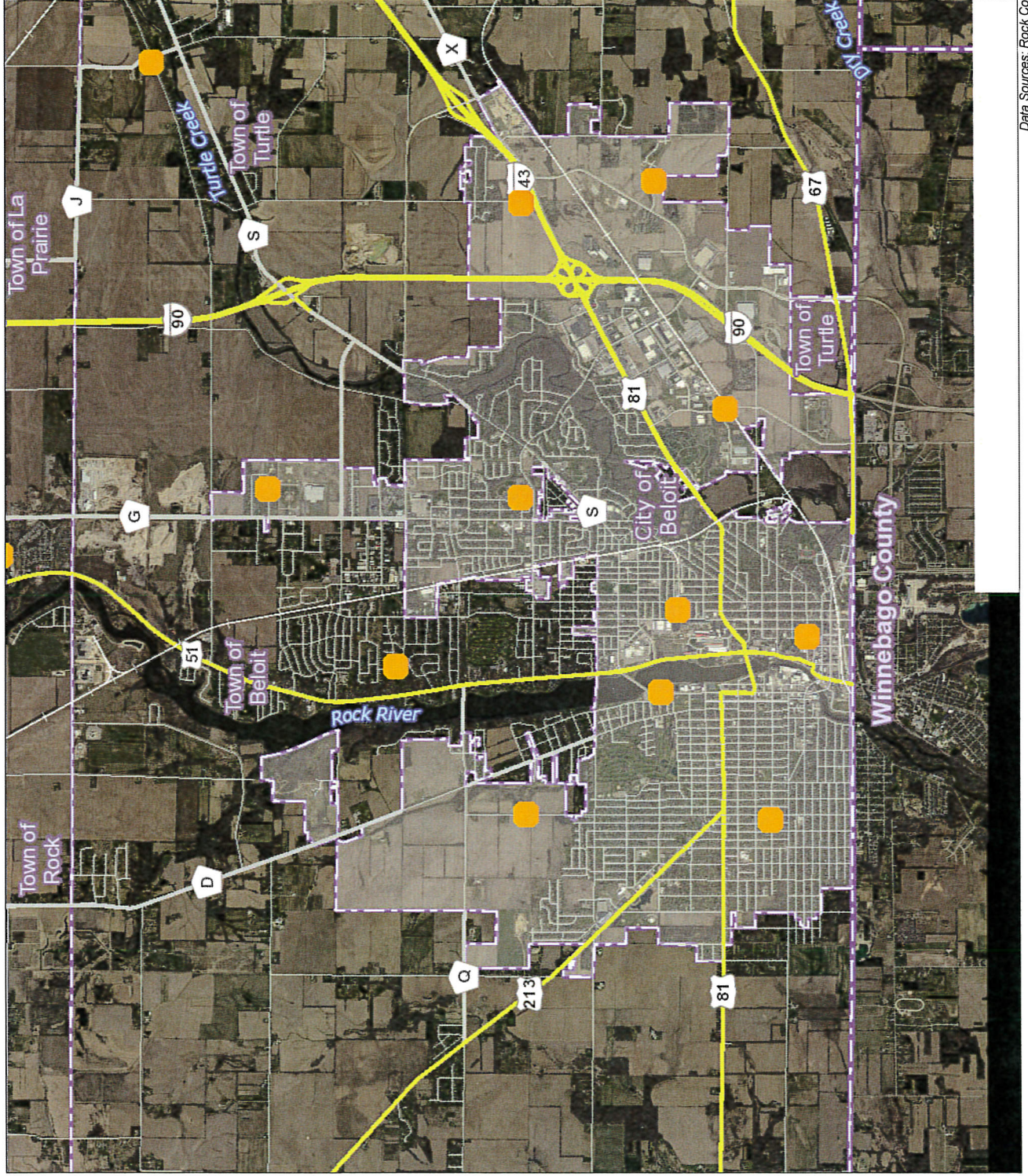
Data Sources: Rock County Planning and Development Agency. Imagery Date: 2017



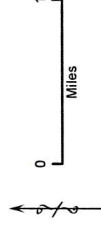
Rock County Land Information Office

City of Beloit Emergency Sirens

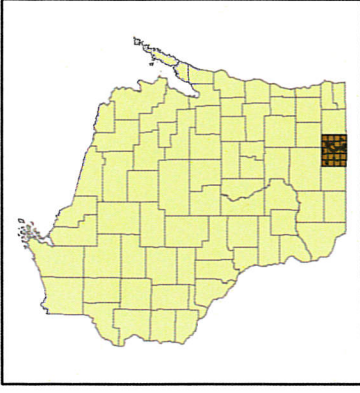
Rock County, Wisconsin



● Sirens



5/11/2018



Duplication of this map is prohibited without written consent of the Rock County Planning, Economic and Community Development Agency. The data in this map was compiled using the Rock County Coordinate System. All graphic and attribute information is based on the Rock County Coordinate system. This map is not intended to be a substitute for an actual field survey and is an advisory reference only.

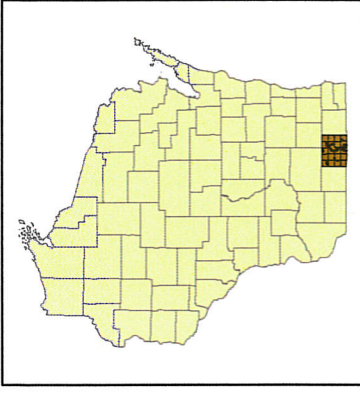
Rock County Geographic Information Systems (GIS)
Planning, Economic and Community
Development Agency




31 S Main St, Janesville, WI 53145
(TEL) 908-757-5367, (FAX) 608-757-5586
email: plandev@rockcountywisconsin.com

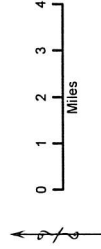
Countywide Emergency Sirens

Rock County, Wisconsin



5/11/2018

 Sirens



Duplication of this map is prohibited without written consent of the Rock County Planning, Economic and Community Development Agency. The data in this map was compiled using the Rock County Coordinate System. All graphic and attribute information is based on the Rock County Coordinate system. This map is not intended to be a substitute for an actual field survey and is an advisory reference only.

Rock County Geographic Information Systems (GIS)
 Planning, Economic and Community
 Development Agency



31 S Main St, Janesville, WI 53545
 (TEL) 608-757-5367, (FAX) 608-757-5586
 email: Planning@rockcountywis.com

Data Sources: Rock County Planning and Development Agency, Imagery Date: 2010

