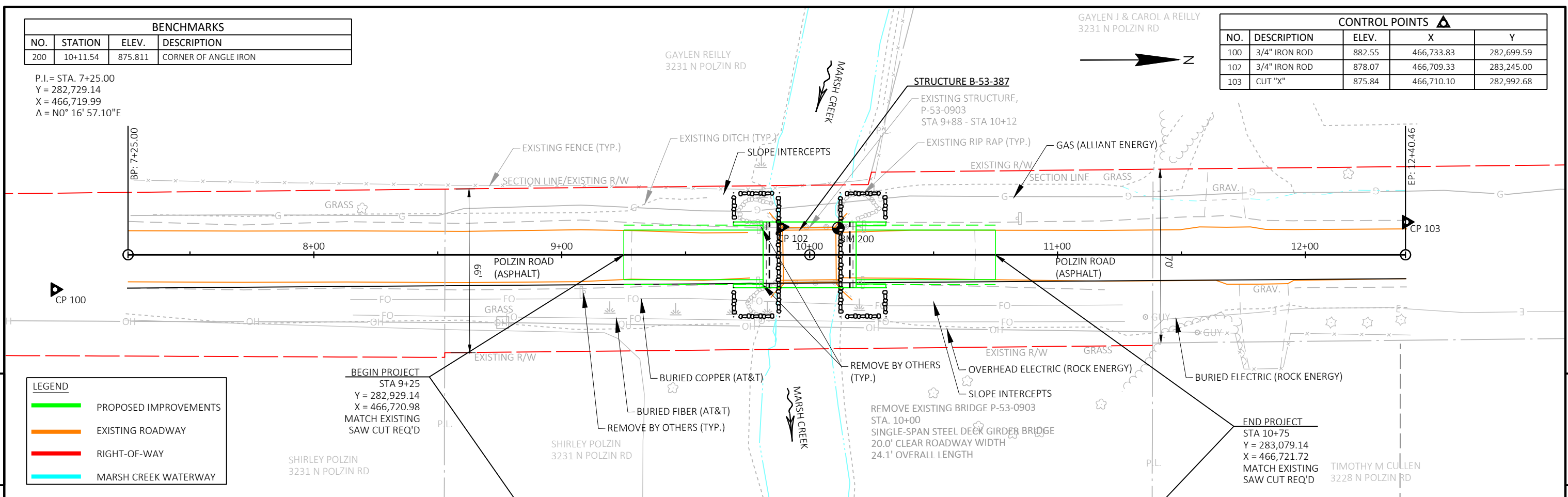


BENCHMARKS			
NO.	STATION	ELEV.	DESCRIPTION
200	10+11.54	875.811	CORNER OF ANGLE IRON

P.I. = STA. 7+25.00
 Y = 282,729.14
 X = 466,719.99
 $\Delta = N0^\circ 16' 57.10'' E$

CONTROL POINTS				
NO.	DESCRIPTION	ELEV.	X	Y
100	3/4" IRON ROD	882.55	466,733.83	282,699.59
102	3/4" IRON ROD	878.07	466,709.33	283,245.00
103	CUT "X"	875.84	466,710.10	282,992.68



LEGEND	
—	PROPOSED IMPROVEMENTS
—	EXISTING ROADWAY
—	RIGHT-OF-WAY
—	MARSH CREEK WATERWAY

BEGIN PROJECT
 STA 9+25
 Y = 282,929.14
 X = 466,720.98
 MATCH EXISTING
 SAW CUT REQ'D

END PROJECT
 STA 10+75
 Y = 283,079.14
 X = 466,721.72
 MATCH EXISTING
 SAW CUT REQ'D

