

Chapter 8 - Utilities and Community Facilities

Per State of Wisconsin Statute 66.1001 - Comprehensive Planning (2)(d), the Utilities and Community Facilities element of a community's comprehensive plan is to be:

"A compilation of objectives, policies, goals, maps and programs to guide the future development of utilities and community facilities in the local governmental unit such as sanitary sewer service, storm water management, water supply, solid waste disposal, on-site wastewater treatment technologies, recycling facilities, parks, telecommunications facilities, power-generating plants and transmission lines, cemeteries, health care facilities, child care facilities and other public facilities, such as police, fire and rescue facilities, libraries, schools and other governmental facilities. The element shall describe the location, use and capacity of existing public utilities and community facilities that serve the local governmental unit, shall include an approximate timetable that forecasts the need in the local governmental unit to expand or rehabilitate existing utilities and facilities or to create new utilities and facilities and shall assess future needs for government services in the local governmental unit that are related to such utilities and facilities."

This Chapter provides information on the County's utilities and community facilities. 8.1. introduces the concept of utilities and community facilities planning. 8.2. provides an inventory of the County's existing utilities and community facilities, whereas 8.3. identifies utilities and community facilities issues and opportunities. 8.4. states the County's utilities and community facilities goals, objectives, and policies.

8.1. Utilities and Community Facilities Planning

A community's utilities and facilities, and the associated services they provide, fill the basic, vital needs of a community's residents. A clean water supply, sufficient healthcare options, reliable energy supplies and emergency services, quality educational institutions, and adequate recreational areas are some of the many amenities provided by a community's utilities and facilities.

The existing and potential location and capacity of a community's utilities and facilities have vast implications for the pattern and pace of its future development. Understanding the utility and community facility needs of a community, in concert with suitable siting, will aid in achieving a desirable community development pace and pattern.

8.2. Utilities and Community Facilities Inventory

Inventorizing a community's existing utilities and community facilities provides valuable insight, vital in determining the desired characteristics of its future utilities and community facilities. The following inventories the County's existing utilities and community facilities, utilizing the following categories:

- Water and Wastewater
- Stormwater
- Energy
- Health and Child Care
- Police and Law Enforcement
- Fire/Rescue and Emergency Medical
- Emergency
- Education
- Solid Waste
- Communications and Media
- Parks and Recreation Areas
- Other County Facilities

Water and Wastewater

The County's water is supplied by various water systems and well types, including:

- Municipal
Serving at least 25 year-round permanent residents per year or 15 residential service connections, and owned by a municipality
- Other Than Municipal (OTM)
Serving at least 25 year-round permanent residents per year or 15 residential service connections, and not owned by a municipality
- Transient Non-Community (TNC)
Serving at least 25 individuals for a minimum of 60 days per year but not the same 25 individuals for over six months of the year
- Non-Transient Non-Community (NTNC)
Serving at least 25 of the same individuals for over six months of the year
- Private
Serving residential property owners

Wastewater in the County is managed either by municipal sanitary sewer systems or on-site waste disposal (septic) systems.

Three municipal sanitary sewer systems, serving over 10,000 residents, are located in the County, including the City of Janesville, City of Beloit, and Town of Beloit. These systems, commonly called 208, are required by the WDNR to plan their service capabilities in conformance with current groundwater quality standards. The County has an active role in

assisting these municipal sanitary sewer service providers by participating as a technical advisor, holding public hearings, aiding in establishing future boundaries, and reviewing development proposals that require approvals for municipal sewer service extensions.

Several other smaller municipal sanitary sewer systems, serving less than 10,000 residents, are located in the County, including the City of Evansville, City of Milton, City of Edgerton, Village of Clinton, Village of Orfordville, Village of Footville, Hanover, and Consolidated Koshkonong (Newville area and Indianford).

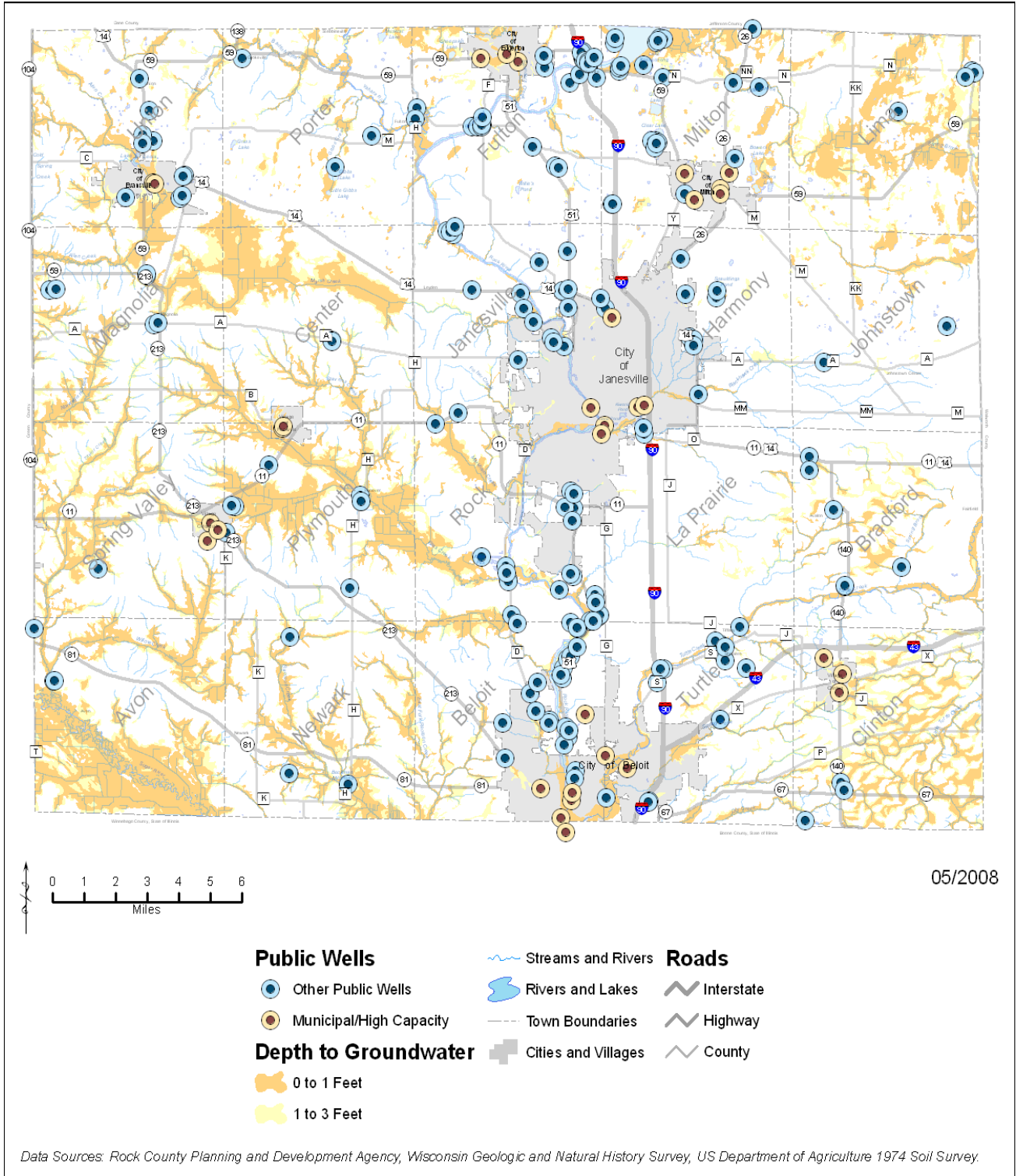
The wastewater of County residents and businesses not residing within the boundaries of any of the aforementioned municipal sanitary sewer systems is treated by on-site waste disposal (septic) systems. The State of Wisconsin adopted a revised private on-site disposal system policy in 2000, COMM 83, allowing for conventional (underground) systems and alternative (above-ground) systems. Per COMM 83, soil characteristics determine suitability for conventional and alternative on-site wastewater disposal (septic) systems.

There are approximately 13,000 privately operated residential and commercial septic systems in the County. The County permits the use of several different systems, including:

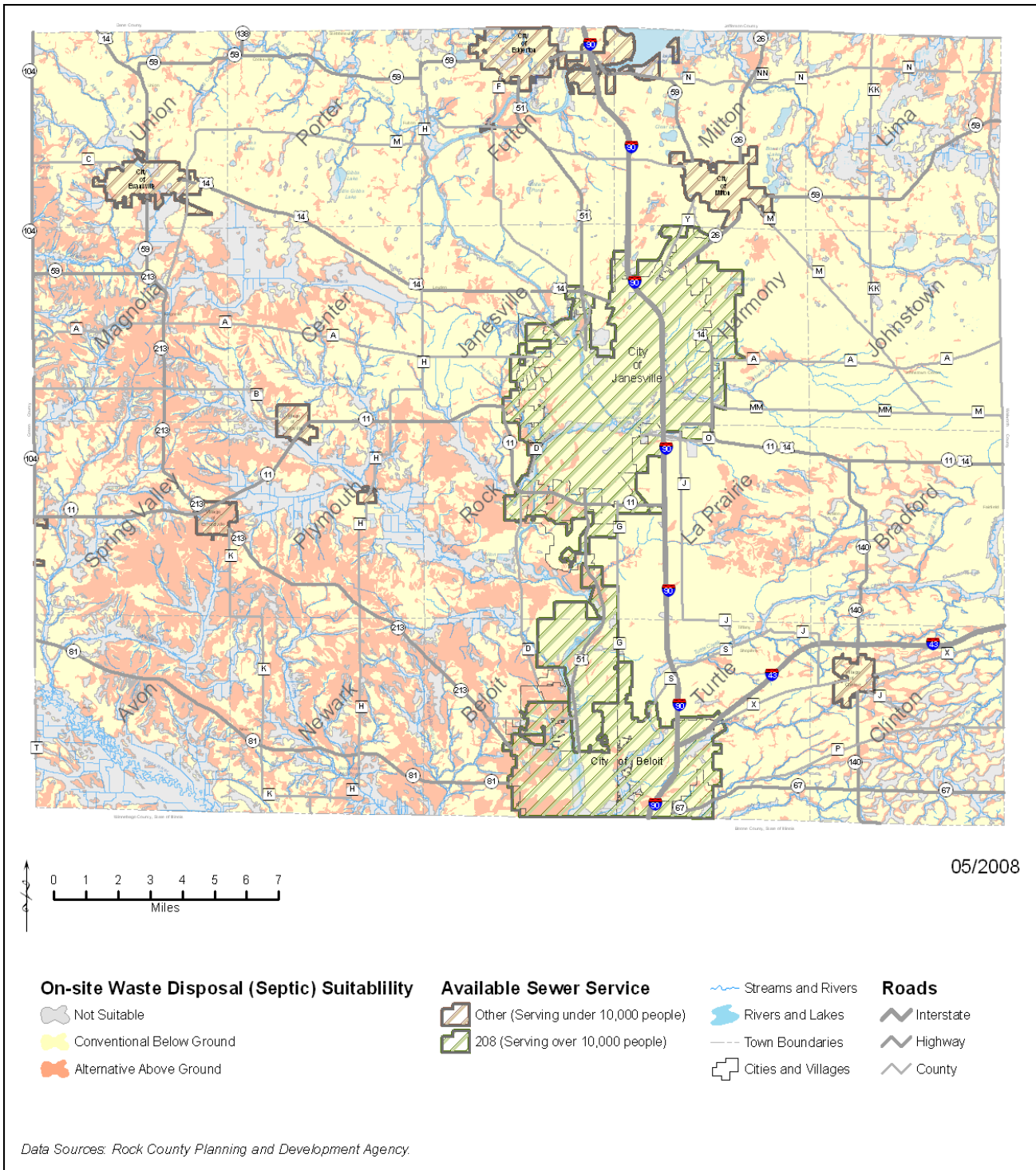
- Conventional
Utilizes a tank with effluent distributed gravitationally to a below-ground drain field
- Pressure Dosing
Utilizes a tank with effluent distributed by a pump through a pressurized pipe system to a below-ground drain field
- Aerobic Treatment Unit (ATU)
Utilizes a tank with effluent distributed by a pump through a pressurized pipe system to either an above or below-ground drain field, via an aerobic tank in which effluent is exposed to air
- At-Grade
Utilizes a tank with effluent distributed by a pump through a pressurized pipe system to a drain field located just below the surface
- Mound (Wisconsin Mound - Single Pass Sand Filter)
Utilizes a tank with effluent distributed by a pump through pressure-fed pipes to an above-ground drain field

Map 8.1 displays public water systems (municipal, OTM, TNC, and NTNC) located in the County, as well as areas with groundwater close to the surface. Map 8.2 displays municipal sanitary sewer system areas located in the County, in addition to suitability for on-site waste disposal (septic) systems.

Map 8.1:
Water



**Map 8.2:
Municipal Sanitary Sewer Service Systems and
On-Site Waste Disposal Suitability**



Stormwater

Stormwater management in the County is provided through the efforts of various municipalities, including the County, Cities, Villages, and Towns, in addition to State and Federal agencies.

All Cities and Villages located in the County have municipal stormwater systems, whereas the County's Land Conservation Department manages stormwater in unincorporated areas of the County through application of the Storm Water Management Ordinance (Chapter 28 - Municipal Code of the County of Rock). This ordinance establishes long-term requirements to reduce post-construction stormwater and associated pollutant runoff. Additional agencies, including the WDNR (DNR Administrative Code Chapter NR 216 - Stormwater Discharge Permits) and the Environmental Protection Agency (EPA Stormwater Phase II - Final Rule), regulate stormwater in the County by requiring permits/management plans on large land-disturbing projects or those taking place in environmentally sensitive areas.

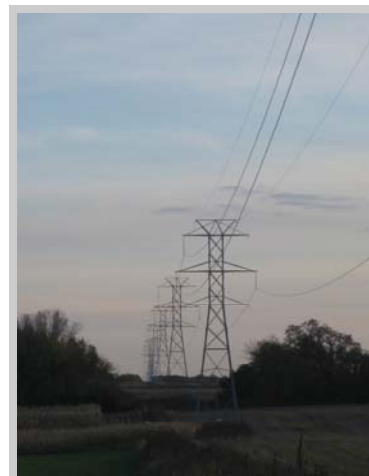
Energy

Various entities generate and deliver energy (electricity and natural gas) in the County, including:

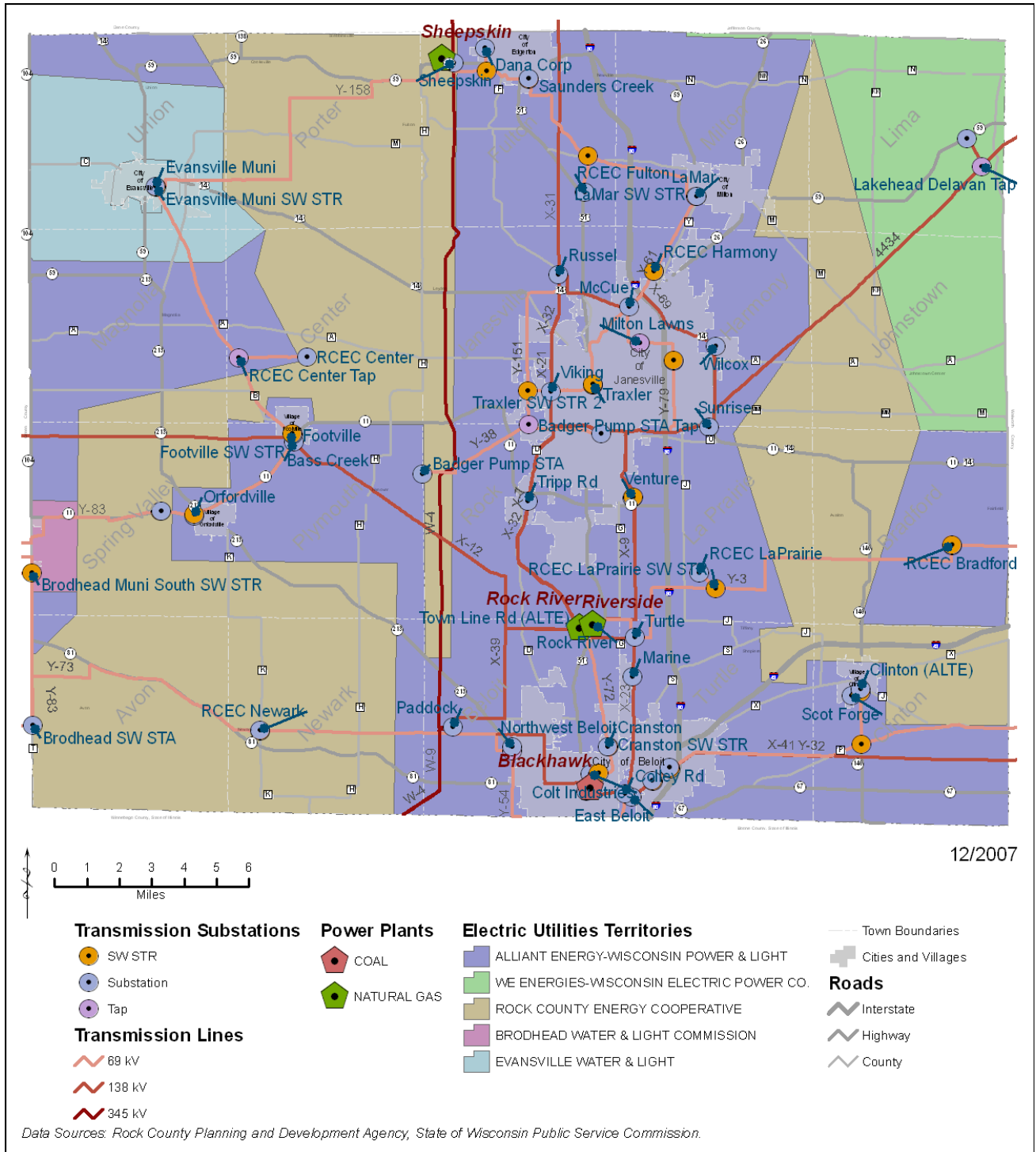
- Alliant Energy Corporation (Wisconsin Power and Light)
This entity generates electricity, from both renewable and non-renewable resources, and delivers it in the County. Alliant operates the Rock River Generating Station, an electrical power station located between the Cities of Janesville and Beloit. This station, in operation since the early 1950's, is completely natural gas fired.
- Calpine Corporation
This entity, per Wisconsin Public Service regulations, generates electricity for purchase and delivery by other power entities located both within and outside of the County. Calpine owns and operates the Riverside Energy Center, an electrical power station located adjacent to the Rock River Generating Station. The Center, a combined cycle natural gas facility and intermediate load merchant plant, began operations in 2004. Wisconsin Power and Light (WPL) has a ten-year contract to purchase and deliver the majority of electricity produced at the Center. Surplus electricity produced at the Center not needed by WPL is available for purchase by other energy entities.
- WE Energies (Wisconsin Electric Power Company, Wisconsin Electric Gas Operations, and Wisconsin Gas Company)
This entity delivers electricity and natural gas in the County.
- Rock Energy Cooperative (REC)
This entity, a member of the nationwide Touchstone Energy alliance, purchases and delivers electricity and natural gas to REC members in the County.

- *Brodhead Water and Light Commission*
This entity, a member of Wisconsin Public Power Incorporated (WPPI), purchases electricity from WPPI and delivers it to City of Brodhead residents.
- *Evansville Water and Light*
This entity, a member of WPPI, purchases electricity from WPPI and delivers it to City of Evansville residents.
- *American Transmission Company (ATC)*
This entity delivers electricity in the County. Currently, ATC has two major lines in the County, the 15-mile Wempleton-Paddock line, and the 18-mile Turtle to West Darien line. ATC recently completed improvements on the Wempleton-Paddock line, connecting the south-central Wisconsin (Janesville/Beloit) and the north-central Commonwealth Edison (greater Rockford, Illinois) systems to improve capacity and relieve overloading on nearby lines. The Turtle to West Darien line has also recently been upgraded to provide for expanded capacity and continued reliability, including conversion to a 138-kilovolt line and addition of new steel poles and lines. Additionally, ATC will be implementing various other transmission lines, system conversions, and substation modifications over the next five years. Specifically, ATC will be constructing a new 35-mile, 345-kilovolt line, running from the County's south to southeastern Dane County, paralleling the existing 345-kilovolt line along the U.S. Highway 51 corridor.
- *ANR Pipeline Company*
This entity delivers natural gas in the County.
- *Northern Natural Gas*
This entity delivers natural gas in the County.

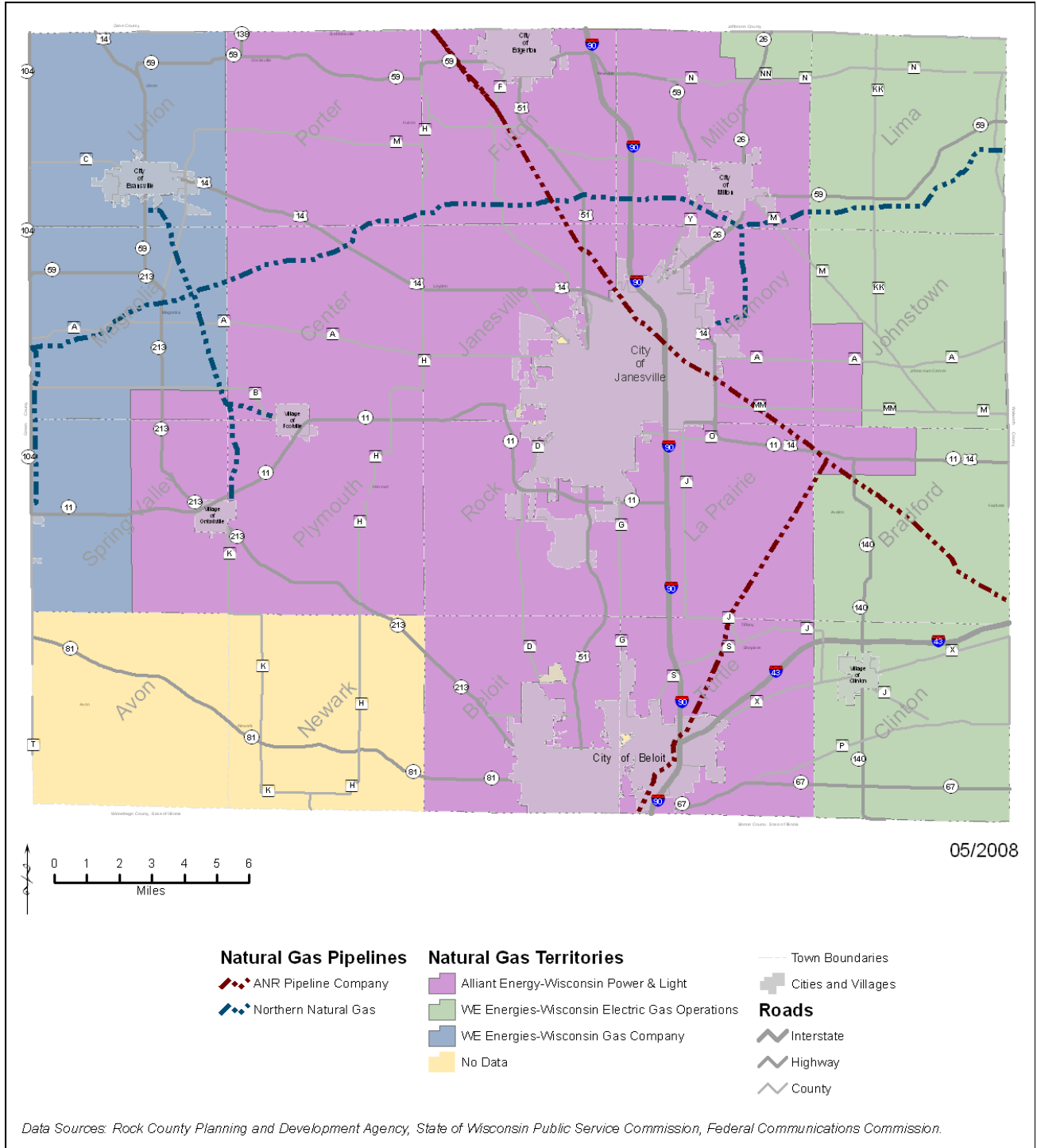
Maps 8.3 and 8.4 display the various energy entities servicing the County, in addition to their facilities and infrastructure. Map 8.3 displays utilities and facilities/infrastructure providing electricity in the County, whereas Map 8.4 displays utilities and facilities/infrastructure providing natural gas.



Map 8.3:
Electricity



Map 8.4:
Natural Gas



Health and Child Care

The County is home to many quality health and child care facilities, including those in both the public and private sector.

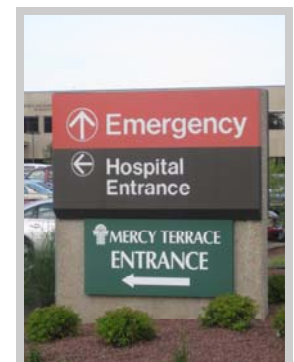
The County's Health Department, with offices in the Cities of Janesville and Beloit, aims to promote, protect, and enhance the County's collective health and environment by providing various services, including communicable disease investigation and prevention, HIV testing, immunizations, lead testing, private sewage disposal, public school nursing, sexually transmitted disease clinic, water testing, health education, general sanitation, groundwater contamination prevention, food protection and health inspections, and health care for children with special needs. The department is designated a level III agency by the Wisconsin Division of Public Health, the highest level of state designation for a local health department.

Rock Haven Skilled Nursing Home, operated by the County and located in the City of Janesville, provides services and treatments to County residents including the elderly, as well as those in need of rehabilitation, with developmental disabilities, or behavioral, emotional, and psychiatric needs. Rock Haven has three resident care units certified for Medicare and medical assistance, including:

- *Meadow Place*
This unit provides rehabilitative care, complex medical care, and traditional long-term care, including intensive and skilled nursing care for frail and medically needy adults.
- *Harbor Way*
This unit provides structured group activities, psychiatric and behavior interventions, and psychiatric/skilled nursing care for persons with gero-psychiatric disorders or severe and persistent mental illness requiring specialized services.
- *Glen Lane*
This unit provides intermediate and skilled nursing care for persons with Alzheimer's disease or other dementias, activity socialization and life enrichment programs, safety systems, and assistance with living activities.

Various other private health care facilities are located in the County, including clinics (13) and hospitals (three) offering emergency room and urgent care services. Hospitals located in the County include:

- *Mercy Hospital*
City of Janesville
- *Edgerton Hospital*
City of Edgerton
- *Beloit Memorial Hospital*
City of Beloit



The County has 33 childcare facilities that are regulated, licensed, or certified by the State of Wisconsin. The majority of these facilities are located in the County's Cities.

Police and Law Enforcement

Police and law enforcement service in the County is provided through the efforts of various municipalities, including the County, Cities, Villages, and Towns. These departments work in conjunction to ensure adequate police and law enforcement service for all County residents. The County Sheriff's Department, with a main and remote office located in the City of Janesville, has jurisdiction over all areas of the County and employs approximately 90 full-time officers. The Department also manages the County Jail located at the County Complex, on the north side of the City of Janesville, at the intersection of U.S. Highway 14 and U.S. Highway 51.

Other municipalities in the County have their own police and law enforcement departments, including the City of Janesville, City of Beloit, City of Milton, City of Edgerton, City of Evansville, Village of Clinton, Village of Orfordville, Town of Fulton, Town of Milton, Town of Beloit and Town of Turtle.

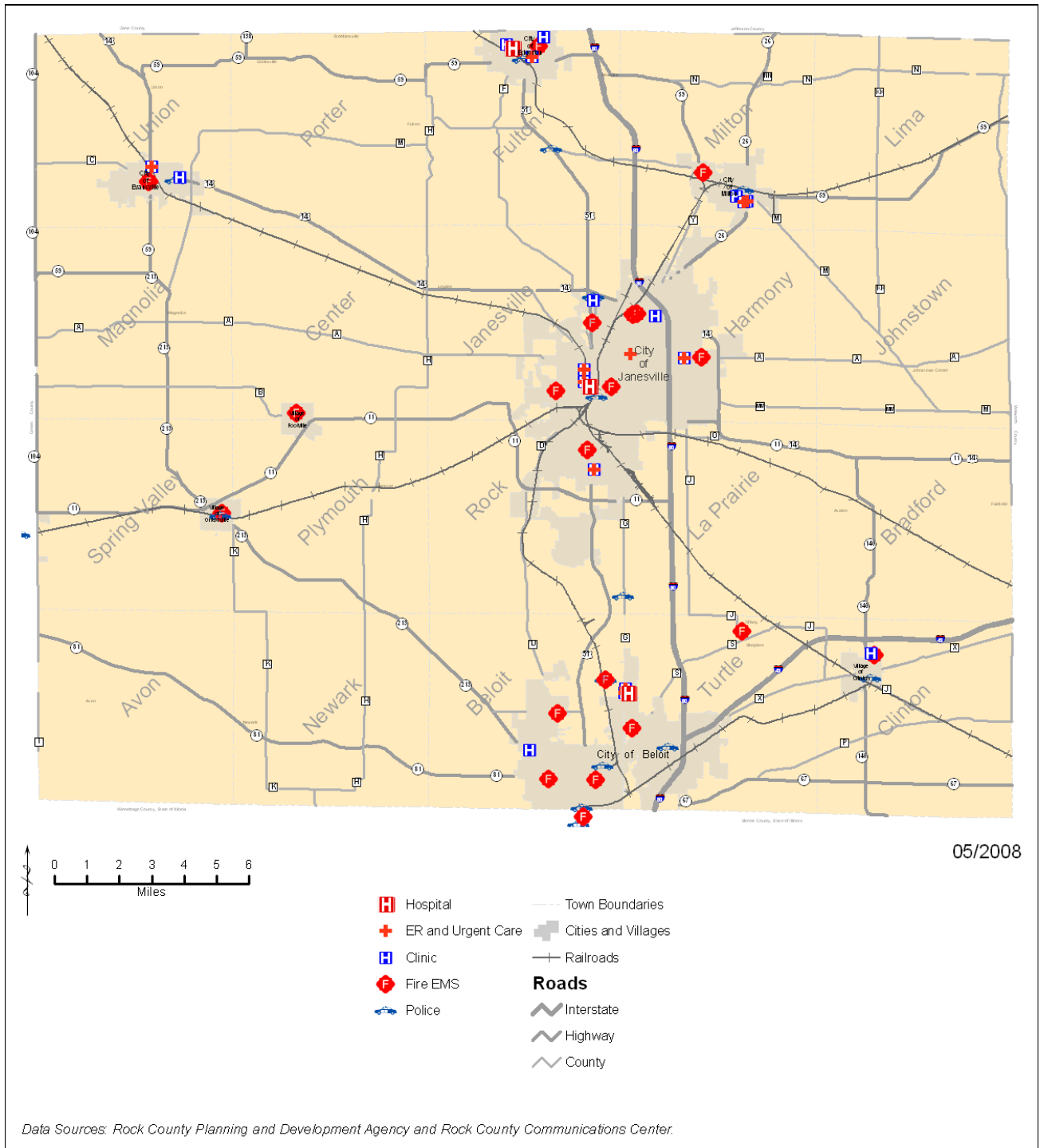
Fire/Rescue and Emergency Medical

Fire/rescue and emergency medical services in the County are also provided through the efforts of departments in various municipalities, including Cities, Villages, and Towns. Several of these departments cover multiple municipalities via mutual aid agreements. Fire/rescue and emergency medical service departments located in the County include the City of Janesville, City of Beloit, City of Milton, City of Edgerton, City of Evansville, Village of Footville, Village of Orfordville, Village of Clinton and Town of Beloit.

Map 8.5 displays police and law enforcement, fire/rescue and emergency medical, and health care facilities located in the County.



Map 8.5:
Police and Law Enforcement,
Fire/Rescue, Emergency Medical, and Health Care Facilities



Emergency

The County provides for emergency management through its Emergency Management Agency and Telecommunications Center.

The County's Emergency Management Agency, located in the City of Janesville, coordinates County wide responses, in support of local governments, to major disasters and emergencies. This agency prepares other governmental entities, volunteer organizations, private business, and citizens to respond to and recover from major emergencies and disasters.

The County's Telecommunications Center, located in the City of Janesville, provides 24-hour dispatching services for all County police and law enforcement, fire/rescue and emergency medical services. The Center is accredited by the Commission on Accreditation for Law Enforcement Agencies.

Education

The County is home to various quality educational facilities and institutions, including those primary and secondary (K-12th grade), post-secondary, and providing library services.

Eight public school districts (K-12th grade) have facilities located in the County, including:

- Janesville
19 schools (12 elementary, three middle, two high, charter, and academy)
- Beloit
17 schools (12 elementary, two middle, high, charter, and education center)
- Beloit Turner
Four schools (two elementary, middle, and high)
- Milton
Seven schools (four elementary, intermediate, middle, and high)
- Edgerton
Four schools (two elementary, middle, and high)
- Evansville Community
Four schools (elementary, intermediate, middle, and high)
- Clinton Community
Four schools (elementary, middle, high, and charter)

- Parkview (Orfordville-Footville)
Six schools (three elementary, middle, high, and charter)

These districts combined for 65 public educational facilities located within the County's borders in 2007, including nine high, eleven middle, two intermediate, 37 elementary, four charter schools, and one academy and education center. Enrollment in these schools, as of 2007, totaled approximately 28,220 students. Total student enrollment in public school districts with facilities located in the County is increasing over the past few years, in contrast to overall State of Wisconsin student enrollment numbers, which are decreasing.

Additionally, 14 private schools enrolling approximately 2,000 students are located in the County, nine in the City of Janesville and five in the City of Beloit. These schools enroll pre-K-12th grade students and have various religious and/or other affiliations.

Other public school districts (K-12th grade) have no facilities within the County but do have boundaries stretching into the County, including Fort Atkinson, Whitewater, Delavan-Darien, Brodhead, Albany, Oregon, and Stoughton Area.

The County is also home to post-secondary educational institutions, including:

- Beloit College
This four-year private college, located in the City of Beloit, is recognized for its longstanding commitment to curricular innovation, its first-year initiatives, and international education programs. The college offers more than fifty majors, more than thirty minors, and a number of dual-degree and pre-professional programs. The college enrolled approximately 1,300 students and had a student to faculty ratio of approximately 11:1 in 2007.
- Blackhawk Technical College
This two-year public technical college, with a central campus located between the Cities of Janesville and Beloit and various other facilities scattered throughout the County, offers comprehensive occupational skills training through associate degree, technical diploma, certificate, and apprenticeship programs. The college enrolled approximately 4,500 students in 2007.
- University of Wisconsin - Rock County
This two-year liberal arts transfer campus, located in the City of Janesville, is one of 13 such campuses in the University of Wisconsin system. In addition to offering an associates degree, this institution offers students the opportunity to begin studies and then transfer to four-year colleges and universities in the State of Wisconsin and throughout the country to complete their bachelor's degrees. Additionally, the campus recently instituted a four-year engineering degree program. This institution enrolled approximately 950 students and had a student to faculty ratio of 20:1 in 2007.

- University of Wisconsin Extension - Rock County

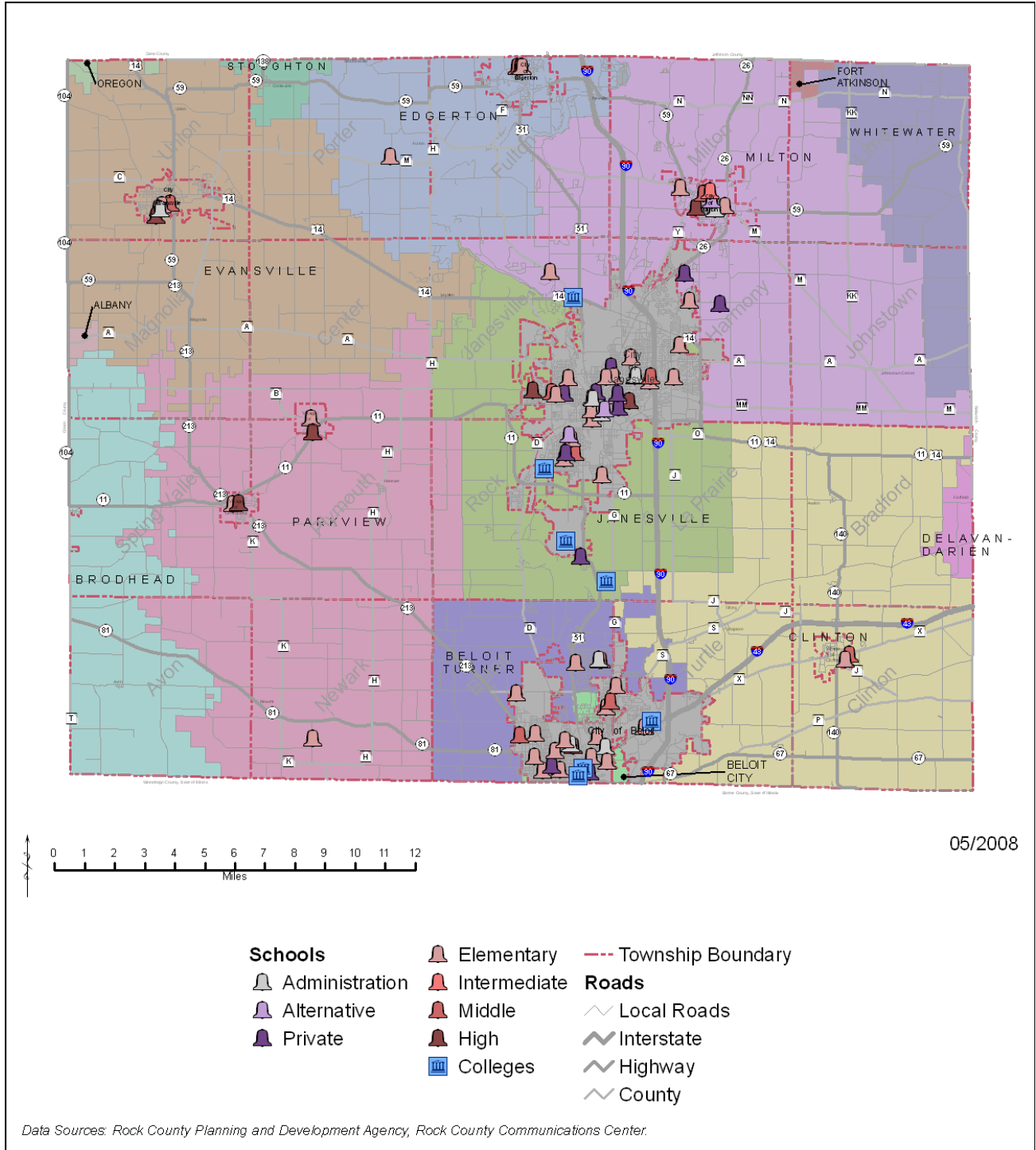
This agency, located in the City of Janesville, extends the knowledge and resources of the University of Wisconsin system to County residents in the areas of agriculture, agribusiness, natural resources, family living, and youth development. Extension specialists are University of Wisconsin faculty and/or staff who develop practical educational programs tailored to local needs, based on university knowledge and research.

Other educational facilities and services available to County residents include the Arrowhead Library System (ALS), which coordinates the County's public library services. Member libraries are located in the City of Janesville, City of Beloit, City of Milton, City of Edgerton, City of Evansville, Village of Clinton, and Village of Orfordville. ALS offers interlibrary loan transactions, nursing home/assisted living collections and jail library services, computer training and technology support, continuing education for library staff, public relations consulting, and collaboration with the County 4-H Fair and City of Janesville and Stateline Literacy Councils.



Map 8.6 displays educational facilities and public school districts located in the County.

**Map 8.6:
Educational Facilities and Public School Districts**



Solid Waste

Solid waste management in the County, including disposal and recycling, is provided by various public and private entities.

The City of Janesville owns and operates the City/County demolition and sanitary landfill located in the City. The landfill is available to all residential, commercial, and industrial waste generators in the County, and also offers drop-off recycling services. This landfill reached capacity in 2005 and was expanded to ensure continued service to County residents.

Most County municipalities contract with private service providers to offer solid waste and recycling collection services to their residents. Some County municipalities have recycling centers that provide drop-off services.

Communications and Media

Multiple communication and media facilities are present in the County, offering various services including cellular/land-line telecommunication, internet, cable television, and radio.

Multiple cellular telecommunications towers managed by various providers are located throughout the County, providing complete cellular telecommunication coverage. CenturyTel provides landline telecommunication service throughout the County.

Dial-up/high-speed internet service is also provided throughout the County by various providers. High-speed internet service is provided predominately in the County's urban areas by Charter Communications.

Cable television service is provided predominately in the County's urban areas by Charter Communications. Satellite television service, including DISH Network and DirectTV, is available to most rural County residents.



Radio stations broadcasting from the Cities of Janesville, Madison, and Milwaukee, Wisconsin and Rockford, Illinois, among others, are accessible throughout the County.

Parks and Recreation Areas

The County has extensive park, recreational and open space areas located within its borders, including properties and facilities owned/managed by the County and other entities, offering a variety of outdoor recreational and educational opportunities.

The County Park system consists of 20 properties comprising approximately 1,200 acres, offering hiking, biking, fishing, sports fields, lake/river access, picnic facilities, and environmental interpretation. The Cities of Janesville and Beloit both have extensive park, recreation area, and open space systems including portions of the Ice Age National Scenic Trail, a Statewide trail commemorating the State's geologic history. Additionally, the WDNR and United States Fish and Wildlife Service own tracts of land in the County dedicated to public recreational use.

The County's fairgrounds, owned by the County and operated by the 4-H Fair Board Association, rests on approximately 19 acres of land in the City of Janesville. The fairgrounds consists of eight barns, a grandstand, administrative offices, historical buildings including a 4-H museum and the Frances Willard School, restroom facilities, and various pole-shed buildings that host community events and club activities, and provide storage space.

Other County Facilities

The County owns and operates various other community facilities, providing valuable services to its residents.

The County Courthouse, located in the City of Janesville, houses the County's administrative departments in addition to serving as the judicial center. The Courthouse was recently expanded and upgraded in 2005 to better meet the needs of County residents.

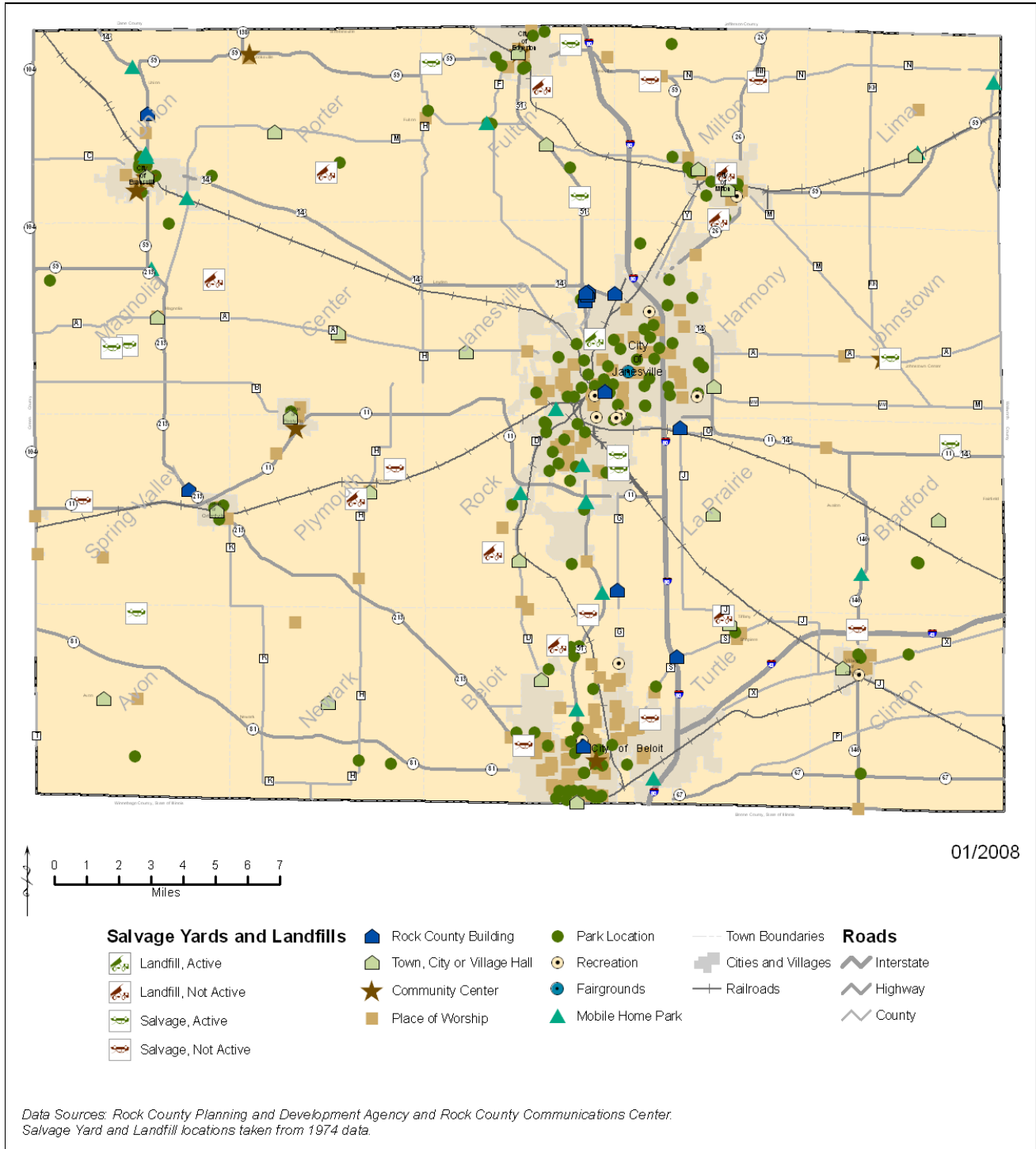
The Southern Wisconsin Regional Airport, located in the City of Janesville, is designated as an air carrier/cargo facility, indicating the airport can accommodate all aircraft, up to and including, wide body jets and large military transports. The airport is one of ten in the State carrying this designation, according to the *Wisconsin State Airport System Plan 2020*.

The County Job Center, located in the City of Janesville, provides resources to assist in enhancing the quality of the County's workforce. The center is nationally recognized, offering a wide range of education, employment, training, and workshop opportunities to those seeking employment. The center also services employers in providing access to a large pool of potential employees and serves as a location for community meetings and conferences.

Map 8.7 displays these various community facilities located throughout the County.



Map 8.7:
Various Community Facilities



8.3. Utilities and Community Facilities Issues and Opportunities

This section identifies the County's utilities and community facilities issues and opportunities.

- Regional and County growth will require maintenance, improvement, and/or expansion of all utilities and community facilities in all categories to maintain adequate levels through 2035. The majority of utilities and community facilities in the County are adequate at present levels. Utilities and community facilities in the County that are deficient at present levels include various energy facilities and infrastructure, public school facilities in various districts, and telecommunication, high-speed internet, and cable television service in the County's rural areas.
- County growth and development will require new wells to satisfy water demand. The County has various old, closed landfill sites and salvage yards that may have implications for the location and type of development, and new well sites.
- County growth and development will require additional on-site waste disposal (septic) systems and improved infrastructure and capacity of municipal sewer service systems. The County has areas that are suitable for various types of on-site waste disposal (septic) systems, as well as areas that are not suitable for any type of system. The suitability of an area for on-site waste disposal systems will have implications for the location and type of development in the County.
- Adequate public school facilities and sufficient allocation of educational resources is a constant issue in growth communities. Various County public school districts will need to improve and expand current facilities and resources to ensure continued, sufficient levels of educational service to County students.
- Increasing energy efficiency through development of alternative sources and associated infrastructure is becoming a cornerstone of the national energy system due to environmental and socio-economic costs of contemporary dominant sources. Governmental entities at various levels are exploring methods to increase energy efficiency in their day-to-day operations, including constructing and retrofitting governmental buildings according to Leadership in Energy and Environmental Design (LEED) principles, utilizing automobiles powered by alternative energy sources, and adoption of comprehensive regulations (eco-municipality resolutions) stipulating their commitment to energy efficiency. Additionally, wind energy is becoming an increasingly popular energy source due to its relatively low infrastructure development costs and environmental impact. Allowing wind farms in the County, subject to a comprehensive feasibility/impact study, could provide the County and its municipalities with additional revenue, in addition to mitigating environmental degradation. Regulating wind farm sites would need to be addressed through local ordinances.

- The County Fairgrounds is located in the heart of the City of Janesville, surrounded by residential development. Due to the age of the infrastructure at the current fairground site and limited potential for expansion, the County is examining the feasibility of relocating the fairgrounds to ensure the opportunity for Fairground improvement and expansion.
- The County is currently studying the future needs of the jail facility that includes the development of inmate population projections, a correctional program, and design alternatives. The ultimate decision on how to proceed with consideration of future jail facility needs will be based on the policies, goals, and programs developed by the County Sheriff's Department in consultation with other criminal justice system stakeholders.

Figure 8.1 displays the present conditions of utilities and community facilities in the County, in addition to future issues and opportunities through 2035.



**Figure 8.1:
Utilities and Community Facilities -
Present Conditions and Future Issues and Opportunities**

Utilities and Community Facilities	Present Conditions	Future Issues and Opportunities: 2010-2035
Water		
Municipal		
City of Janesville	Adequate	Normal and reasonable maintenance, improvement, and/or expansion to maintain present conditions
City of Beloit	Adequate	Normal and reasonable maintenance, improvement, and/or expansion to maintain present conditions
City of Milton	Adequate	Normal and reasonable maintenance, improvement, and/or expansion to maintain present conditions
City of Edgerton	Adequate	Normal and reasonable maintenance, improvement, and/or expansion to maintain present conditions
City of Evansville	Adequate	Additional investment (new west side storage facility, 2020-2025) to maintain present conditions
Village of Orfordville	Adequate	Normal and reasonable maintenance, improvement, and/or expansion to maintain present conditions
Village of Footville	Adequate	Normal and reasonable maintenance, improvement, and/or expansion to maintain present conditions
Village of Clinton	Adequate	Normal and reasonable maintenance, improvement, and/or expansion to maintain present conditions
Other		
Other Than Municipal, Transient Community, Transient Non-Community, Non-Transient Non-Community	Adequate	Normal and reasonable maintenance, improvement, and/or expansion to maintain present conditions
Private	Adequate	Normal and reasonable maintenance, improvement, and/or expansion to maintain present conditions
Wastewater		
Municipal Systems (Over 10,000 Residents)		
City of Janesville	Adequate	Additional investment (increase system capacity) to maintain present conditions
City of Beloit	Adequate	Additional investment (increase system capacity) to maintain present conditions
Town of Beloit	Adequate (45% capacity)	Additional investment (routine maintenance) to maintain present conditions
Municipal Systems (Under 10,000 Residents)		
City of Milton	Adequate	Additional investment (increase system capacity) to maintain present conditions
City of Edgerton	Adequate (70% capacity)	Additional investment (increase system capacity) to maintain present conditions
City of Evansville	Adequate (60% capacity)	Additional investment (increase system capacity) to maintain present conditions
Village of Clinton	Adequate	Additional investment (increase system capacity) to maintain present conditions
Village of Orfordville	Adequate	Aging infrastructure will require additional investment (beyond routine maintenance) to maintain present conditions
Village of Footville	Adequate	Additional investment (routine maintenance) to maintain present conditions
Hanover	Adequate	Additional investment (routine maintenance) to maintain present conditions
Consolidated Koshkonong	Adequate	Aging infrastructure will require additional investment (beyond routine maintenance) to maintain present conditions
Stormwater		
County	Adequate	Revise Storm Water Management Ordinance (Chapter 28 - Municipal Code of the County of Rock) as needed to maintain present conditions
Municipal	Adequate	Normal and reasonable maintenance, improvement, and/or expansion to maintain present conditions

Utilities and Community Facilities	Present Conditions	Future Issues and Opportunities: 2010-2035
Energy		
Alliant Energy Corporation	Improvement needed	Additional investment (upgrade and expansion, 2008-2012) to maintain adequate service levels
Calpine Corporation	Adequate	Normal and reasonable maintenance, improvement, and/or expansion to maintain present conditions
WE Energies	Adequate	Normal and reasonable maintenance, upgrade, and/or expansion to maintain present conditions
Rock County Energy Cooperative (REC)	Adequate	Normal and reasonable maintenance, improvement, and/or expansion to maintain present conditions
Evansville Water and Light	Improvement needed	Additional investment (upgrade, 2008-2010) to maintain adequate service levels
Brodhead Water and Light Commission	Adequate	Normal and reasonable maintenance, improvement, and/or expansion to maintain present conditions
American Transmission Company (ATC)	Improvement needed	Additional investment (upgrade, 2008-2010) to maintain adequate service levels
ANR Pipeline Company	Improvement needed	Additional investment (upgrade and expansion, 2008) to maintain adequate service levels
Northern Natural Gas	Adequate	Normal and reasonable maintenance, improvement, and/or expansion to maintain present conditions
Health and Child Care		
Rock County Health Department	Adequate	Normal and reasonable maintenance, investment for expansion intended within planning period
Rock Haven Skilled Nursing Home	Adequate	Normal and reasonable maintenance, investment for expansion intended within planning period
Private facilities	Adequate	Normal and reasonable maintenance, improvement, and/or expansion to maintain present conditions
Police and Law Enforcement		
Rock County Jail Facility	Inmate capacity under study	Normal and reasonable maintenance, future needs study currently underway
Rock County Sheriff's Department	Adequate	Normal and reasonable maintenance, improvement, and/or expansion to maintain present conditions
Municipal	Adequate	Normal and reasonable maintenance, improvement, and/or expansion to maintain present conditions
Fire/Rescue and Emergency Medical		
Municipal	Adequate	Normal and reasonable maintenance, improvement, and/or expansion to maintain present conditions
Emergency		
Rock County Emergency Management Agency	Adequate	Normal and reasonable maintenance, improvement, and/or expansion to maintain present conditions
Rock County Telecommunications Center	Adequate	Normal and reasonable maintenance, improvement, and/or expansion to maintain present conditions
Education		
Public School Districts (Facilities in County)		
Janesville	Adequate	Normal and reasonable maintenance, improvement, and/or expansion to maintain present conditions
Beloit	Adequate	Normal and reasonable maintenance, improvement, and/or expansion to maintain present conditions
Beloit Turner	Adequate	Normal and reasonable maintenance, improvement, and/or expansion to maintain present conditions
Milton	Adequate	Normal and reasonable maintenance, improvement, and/or expansion to maintain present conditions
Edgerton	Adequate	Normal and reasonable maintenance, improvement, and/or expansion to maintain present conditions (no new facilities planned)
Evansville Community	New facilities required	Additional investment (land acquisition for new school, 2010-2012) to maintain adequate service levels
Clinton Community	Adequate	Normal and reasonable maintenance, improvement, and/or expansion to maintain present conditions (no new facilities planned)
Parkview	Adequate	Normal and reasonable maintenance, improvement, and/or expansion to maintain present conditions

Utilities and Community Facilities	Present Conditions	Future Issues and Opportunities: 2010-2035
Education		
Public School Districts (No Facilities in County)		
Fort Atkinson	Adequate	Normal and reasonable maintenance, improvement, and/or expansion to maintain present conditions
Whitewater	Adequate	Normal and reasonable maintenance, improvement, and/or expansion to maintain present conditions
Delavan-Darien	Adequate	Normal and reasonable maintenance, improvement, and/or expansion to maintain present conditions
Brodhead	Adequate	Normal and reasonable maintenance, improvement, and/or expansion to maintain present conditions
Albany	Adequate	Normal and reasonable maintenance, improvement, and/or expansion to maintain present conditions
Oregon	Adequate	Normal and reasonable maintenance, improvement, and/or expansion to maintain present conditions
Stoughton Area	Adequate	Normal and reasonable maintenance, improvement, and/or expansion to maintain present conditions
Post-Secondary Institutions		
Beloit College	Adequate	Normal and reasonable maintenance, improvement, and/or expansion to maintain present conditions
Blackhawk Technical College	Adequate	Normal and reasonable maintenance, improvement, and/or expansion to maintain present conditions
University of Wisconsin - Rock County	Adequate	Normal and reasonable maintenance, improvement, and/or expansion to maintain present conditions
University of Wisconsin Extension - Rock County	Adequate	Normal and reasonable maintenance, improvement, and/or expansion to maintain present conditions
Library		
Arrowhead Library System (ALS)	Adequate	Normal and reasonable maintenance, improvement, and/or expansion to maintain present conditions
Solid Waste		
City/County landfill	Adequate	Normal and reasonable maintenance, improvement, and/or expansion to maintain present conditions
Municipal pick up and recycling services	Adequate	Normal and reasonable maintenance, improvement, and/or expansion to maintain present conditions
Communications and Media		
Telecommunications (Land-line and cellular)	Improvement needed	Additional investment to maintain adequate service levels
Television/Internet	Improvement needed	Additional investment to maintain adequate service levels
Parks and Recreation Areas		
Rock County Park System	Improvements needed	Implement <i>The Rock County, Wisconsin Outdoor Recreation and Open Space (POROS) Plan: 2009-2014</i>
Municipal/WDNR	Adequate	Normal and reasonable maintenance, improvement, and/or expansion to maintain present conditions
Rock County Fairgrounds	Improvement needed	If relocation is approved by County Board, proceed with alternative site investigation, master planning, and relocation
Other County Facilities		
Rock County Courthouse	Adequate	Normal and reasonable maintenance, improvement, and/or expansion to maintain present conditions
Southern Wisconsin Regional Airport	Adequate	Normal and reasonable maintenance, improvement, and/or expansion to maintain present conditions
Rock County Job Center	Adequate	Normal and reasonable maintenance, improvement, and/or expansion to maintain present conditions

8.4. Utilities and Community Facilities Goals, Objectives, and Policies

This section states the County's utilities and community facilities goals, objectives, and policies.

Utilities and Community Facilities Goal

- 8.1. Ensure utilities and community facilities, and their associated services, are available and provided at adequate levels and in suitable locations, in a timely, efficient, equitable, and affordable manner.

Utilities and Community Facilities Objectives and Policies

- 8.1.1. Promote and continue to provide utilities and community facilities, and associated services, to County residents.
 - 8.1.1.a. Rock County shall review and assess annually the facilities and services provided by the County Health Department, Rock Haven Skilled Nursing Home, Sheriff's Department, Emergency Management Agency, Telecommunications Center, Job Center, Arrowhead Library Services, and Southern Wisconsin Regional Airport.
 - 8.1.1.b. Rock County shall apply and enforce the County's Storm Water Management Ordinance (Chapter 28 - Municipal Code of the County of Rock) with the assistance and cooperation of the County's municipalities.
 - 8.1.1.c. Rock County shall continue to examine the feasibility of relocation of the County Fairgrounds.
 - 8.1.1.d. Rock County shall implement *The Rock County, Wisconsin Outdoor Recreation and Open Space (POROS) Plan: 2009-2014*, and support other parks, recreation area, and open space system plans through cooperation with County municipalities, the Wisconsin Department of Natural Resources (WDNR) and Transportation (WisDOT), the Ice Age Trail Foundation, other non-profit conservation organizations, and citizen groups.
- 8.1.2. Continue to foster a productive working relationship with County municipalities and private entities that provide utilities and community facilities, and associated services, to County residents.
 - 8.1.2.a. Rock County shall support the County's municipal police and law enforcement departments through inter-departmental agreements between the County Sheriff's Department and the municipal departments, and with the services of the County's Emergency Management Agency and Telecommunications Center.

- 8.1.2.b. Rock County shall support the County's municipal fire/rescue and emergency medical services departments with the services of the County's Emergency Management Agency and Telecommunications Center.
- 8.1.2.c. Rock County shall support the City of Janesville in operation of the City/County landfill.
- 8.1.2.d. Rock County shall implement *The Rock County, Wisconsin Outdoor Recreation and Open Space (POROS) Plan: 2009-2014*, and support other parks, recreational areas, and open space system plans through cooperation with County municipalities, the Wisconsin Department of Natural Resources (WDNR) and Transportation (WisDOT), the Ice Age Trail Foundation, other non-profit conservation organizations and citizen groups.
- 8.1.2.e. Rock County shall continue to act on behalf of the Wisconsin Department of Natural Resources (WDNR) as a technical advisor and public facilitator in the State's groundwater management review process.
- 8.1.2.f. Rock County shall monitor the County jail facility and encourage the County Sheriff's Department to work with all criminal justice system stakeholders to formulate appropriate decision as to proceed with a proper level of consideration regarding future jail facility needs.
- 8.1.3. Recognize the importance and necessity of emerging utility and community facilities technologies, specifically as they relate to increasing energy efficiency, incorporate these technologies into the County's utilities and community facilities system, and develop regulatory measures to ensure benefit to the County and its municipalities.
 - 8.1.3.a. Rock County shall encourage increased energy efficiency in day-to-day County operations by undertaking a comprehensive study exploring energy efficiency measures, including but not limited to, Leadership in Energy and Environmental Design (LEED) building techniques, utilization of alternative energy automobiles, and eco-municipality resolutions.
- 8.1.4. Encourage residential, commercial, and industrial development in areas with existing utilities and community facilities/services, or areas appropriate for utility and community facility/service improvement and expansion, and discourage development in areas without these facilities/services, or otherwise unsuitable for development.

- 8.1.4.a. Rock County shall adhere to the Rock County Future Land Use Map (Map 5.3, Section II: Chapter 5 - Land Use, *Rock County Comprehensive Plan 2035*) in reviewing rezone, subdivision, and other development proposals.
- 8.1.4.b. Rock County shall partner with County municipalities to ensure land use compatibility and efficient use of utilities and community facilities.
- 8.1.4.c. Rock County shall adhere to the Municipal Sanitary Sewer Service Systems and On-Site Waste Disposal Suitability Map (Map 8.2, Section II: Chapter 8 - Utilities and Community Facilities, *Rock County Comprehensive Plan 2035*) in reviewing development proposals that include new on-site waste disposal (septic) systems.